

SECTION K-K  
SCALE 1:12

NOZZLE SCHEDULE

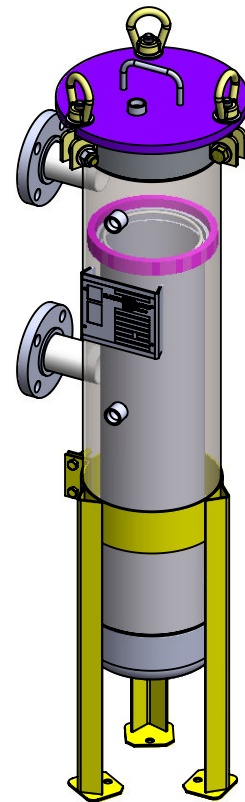
MARK	QTY	SIZE / RATING	DESCRIPTION
N1	1	2" 150# RFSO	INLET
N2	1	2" 150# RFSO	OUTLET
N3	2	1/2" 3000# NPT	PRESSURE GAUGE
N4	1	1/2" 3000# NPT	VENT
N5	1	1/2" 3000# NPT	CLEAN DRAIN
N6	0	-	DIRTY DRAIN

VESSEL DESIGN CONDITIONS

CODE: ASME SECTION VIII DIV. 1, 2015 EDITION			
M.A.W.P.: 150 PSI @ 400°F		M.D.M.T.: -20° F @ 150 PSI	
M.A.W.P.: FV PSI @ 400°F			
CORROSION ALLOWANCE: N/A		HYDROTEST PRESS: 195 PSI	
STAMP: UM		SERVICE: NON LETHAL	
PWHT: N/A		RADIOGRAPHY: N/A	
MATERIAL: CS		GASKET: BUNA-N	

NOTES:

1. VESSEL WILL HOUSE (QTY=1) DOUBLE LENGTH BASKET.
2. DRY WEIGHT: 109 LBS
3. FLOODED WEIGHT: 149 LBS
4. SHIPPING WEIGHT: 130 LBS
5. VESSEL VOLUME: 1 FT<sup>3</sup>



APPROVED WITH MARK-UPS

APPROVED

THIRD ANGLE PROJECTION	
TOLERANCES-UNLESS OTHERWISE NOTED	
DECIMAL	.X = ±.1" .XX = ±.02" .XXX = ±.005"
FRACTIONAL	= ±1/8"
ANGULAR	= ± 1°
MAX. MACHINED SURFACE FINISH	125/√

<b>FIL-TREK CORPORATION</b> 55 Stafford Court Cambridge, Ontario N1T 1B3 Canada Phone: (519) 623-7448 Fax: (519) 623-8807 Email: info@fil-trek.com Website: www.fil-trek.com			
THIS DRAWING IS THE PROPERTY OF 'FIL-TREK CORPORATION' AND MUST NOT BE COPIED OR USED IN ANY WAY DETRIMENTAL TO THE CORPORATION			
EQUIPMENT:		BAG FILTER HOUSING (SL SERIES)	
MODEL NO:		SL112-2F-DB-150	
CUSTOMER:			

PARENT:	DRAWN: MS	DATE: 8/20/2017	SERIAL No.	Part No. 002002-00096	REV. No. 0
CHK'D:	SCALE: NTS				