

SECTION K-K  
SCALE 1:12

NOZZLE SCHEDULE

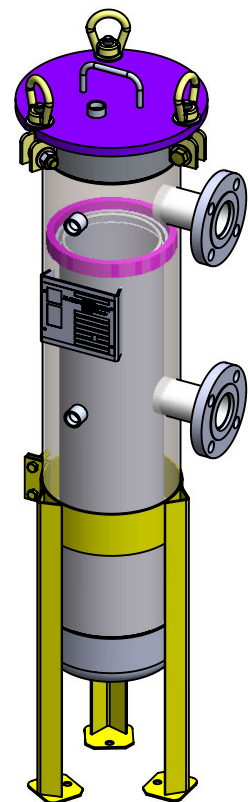
MARK	QTY	SIZE / RATING	DESCRIPTION
N1	1	2" 150# RF50	INLET
N2	1	2" 150# RF50	OUTLET
N3	2	1/2" 3000# NPT	PRESSURE GAUGE
N4	1	1/2" 3000# NPT	VENT
N5	1	1/2" 3000# NPT	CLEAN DRAIN
N6	0	-	DIRTY DRAIN

VESSEL DESIGN CONDITIONS

CODE: ASME SECTION VIII DIV. 1, 2015 EDITION	
M.A.W.P.: 150 PSI @ 250°F	M.D.M.T.: -20° F @ 150 PSI
M.A.W.P.: FV PSI @ 250°F	
CORROSION ALLOWANCE: N/A	HYDROTEST PRESS: 195 PSI
STAMP: UM	SERVICE: NON LETHAL
PWHT: N/A	RADIOGRAPHY: N/A
MATERIAL: CS	GASKET: BUNA-N

NOTES:

1. VESSEL WILL HOUSE (QTY=1) DOUBLE LENGTH BASKET.
2. DRY WEIGHT: 109 LBS
3. FLOODED WEIGHT: 149 LBS
4. SHIPPING WEIGHT: 130 LBS
5. VESSEL VOLUME: 1 FT<sup>3</sup>



APPROVED WITH MARK-UPS  APPROVED

THIRD ANGLE PROJECTION  
TOLERANCES-UNLESS OTHERWISE NOTED  
DECIMAL .X = ±.1" .XX = ±.02" .XXX = ±.005"  
FRACTIONAL = ±1/8"  
ANGULAR = ± 1°  
MAX. MACHINED SURFACE FINISH 125/√

**FIL-TREK CORPORATION**  
55 Stafford Court  
Cambridge, Ontario  
N1T 1B3  
Canada  
Phone: (519) 623-7448  
Fax: (519) 623-8807  
Email: info@fil-trek.com  
Website: www.fil-trek.com

THIS DRAWING IS THE PROPERTY OF 'FIL-TREK CORPORATION' AND MUST NOT BE COPIED OR USED IN ANY WAY DETRIMENTAL TO THE CORPORATION

EQUIPMENT: BAG FILTER HOUSING (SL SERIES)  
MODEL NO: SL112-2F-DA-150  
CUSTOMER:

PARENT:	DRAWN: MS	DATE: 8/20/2017	SERIAL No.	Part No. 002002-00095	REV. No. 0
	CHK'D:	SCALE: NTS			