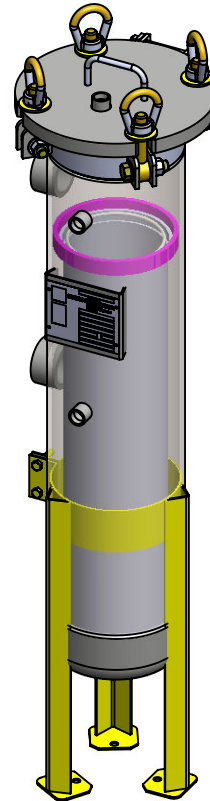


SECTION A-A  
SCALE 1:12

NOZZLE SCHEDULE			
MARK	QTY	SIZE / RATING	DESCRIPTION
N1	1	2" 3000# RFSO	INLET
N2	1	2" 3000# RFSO	OUTLET
N3	2	1/2" 3000# NPT	PRESSURE GAUGE
N4	1	1/2" 3000# NPT	VENT
N5	1	1" 3000# NPT	CLEAN DRAIN
N6	1	-	DIRTY DRAIN

VESSEL DESIGN CONDITIONS			
CODE: ASME SECTION VIII DIV. 1, 2015 EDITION			
M.A.W.P.:	300 PSI @ 250°F	M.D.M.T.:	-20° F @ 300 PSI
M.A.W.P.:	FV PSI @ 250°F		
CORROSION ALLOWANCE:	N/A	HYDROTEST PRESS:	390 PSI
STAMP:	UM	SERVICE:	NON LETHAL
PWHT:	N/A	RADIOGRAPHY:	N/A
MATERIAL:	CS	GASKET:	BUNA-N

- NOTES:
1. VESSEL WILL HOUSE (QTY=1) DOUBLE LENGTH BASKET.
  2. DRY WEIGHT: 163 LBS
  3. FLOODED WEIGHT: 149 LBS
  4. SHIPPING WEIGHT: 100 LBS
  5. VESSEL VOLUME: 1 CU.FT. FT<sup>3</sup>



<p>THIRD ANGLE PROJECTION</p> <p>TOLERANCES-UNLESS OTHERWISE NOTED</p> <p>DECIMAL .X = ±.1" .XX = ±.02" .XXX = ±.005"</p> <p>FRACTIONAL = ±1/8"</p> <p>ANGULAR = ± 1°</p> <p>MAX. MACHINED SURFACE FINISH 125/√</p>	<p><b>FIL-TREK CORPORATION</b></p> <p>55 Stafford Court Cambridge, Ontario N1T 1B3 Canada</p> <p>Phone: (519) 623-7448 Fax: (519) 623-8807 Email: info@fil-trek.com Website: www.fil-trek.com</p>				
	<p>THIS DRAWING IS THE PROPERTY OF 'FIL-TREK CORPORATION' AND MUST NOT BE COPIED OR USED IN ANY WAY DETRIMENTAL TO THE CORPORATION</p> <p>EQUIPMENT: BAG FILTER HOUSING (SL SERIES)</p> <p>MODEL NO: SL112-2P-SW-D-300</p> <p>CUSTOMER:</p>				
PARENT:	DRAWN: TS	DATE: 04/04/2017	SERIAL No.	Part No. 002002-00025	REV. No. 0
	CHK'D:	SCALE: NTS			