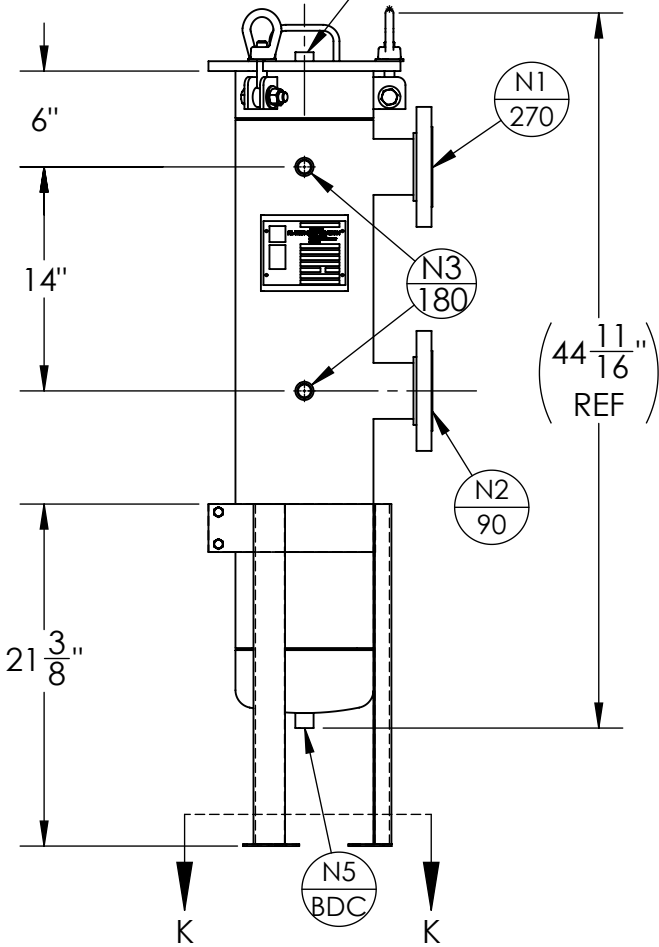
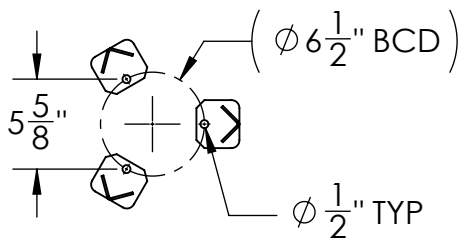


N4
180



$44 \frac{11}{16}$ "
REF

N5
BDC



SECTION K-K
SCALE 1 : 12

NOZZLE SCHEDULE

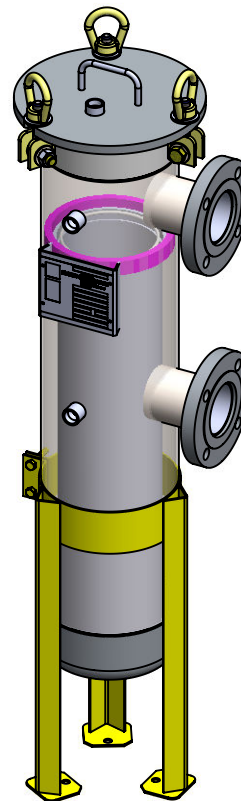
MARK	QTY	SIZE / RATING	DESCRIPTION
N1	1	3" 150# RFSO	INLET
N2	1	3" 150# RFSO	OUTLET
N3	2	1/2" 3000# NPT	PRESSURE GAUGE
N4	1	1/2" 3000# NPT	VENT
N5	1	1/2" 3000# NPT	CLEAN DRAIN
N6	1	-	DIRTY DRAIN

VESSEL DESIGN CONDITIONS

CODE: ASME SECTION VIII DIV. 1, 2015 EDITION	
M.A.W.P.: 150 PSI @ 400°F	M.D.M.T.: -20° F @ 150 PSI
M.A.W.P.: FV PSI @ 400°F	
CORROSION ALLOWANCE: N/A	HYDROTEST PRESS: 195 PSI
STAMP: UM	SERVICE: NON LETHAL
PWHT: N/A	RADIOGRAPHY: N/A
MATERIAL: SS304	GASKET: BUNA-N

NOTES:

1. VESSEL WILL HOUSE (QTY=1) DOUBLE LENGTH BASKET.
2. DRY WEIGHT: 118 LBS
3. FLOODED WEIGHT: 149 LBS
4. SHIPPING WEIGHT: 127 LBS
5. VESSEL VOLUME: 1 FT³



APPROVED WITH MARK-UPS APPROVED

THIRD ANGLE PROJECTION	
TOLERANCES-UNLESS OTHERWISE NOTED	
DECIMAL	.X = ±.1" .XX = ±.02" .XXX = ±.005"
FRACTIONAL	= ±1/8"
ANGULAR	= ± 1°
MAX. MACHINED SURFACE FINISH	125/√

FIL-TREK CORPORATION
 55 Stafford Court
 Cambridge, Ontario
 N1T 1B3
 Canada

Phone: (519) 623-7448
 Fax: (519) 623-8807
 Email: info@fil-trek.com
 Website: www.fil-trek.com

THIS DRAWING IS THE PROPERTY OF 'FIL-TREK CORPORATION' AND MUST NOT BE COPIED OR USED IN ANY WAY DETRIMENTAL TO THE CORPORATION

EQUIPMENT: SL SERIES (BAG FILTER HOUSING)
 MODEL NO: S4SL112-3F-DA-150
 CUSTOMER:

PARENT:	DRAWN: GB	DATE: 12/06/2017	SERIAL No.	Part No. 002002-18556	REV. No. 0
CHK'D:	SCALE: NTS				