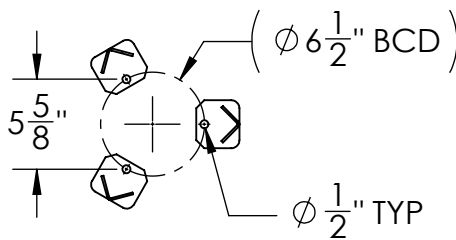
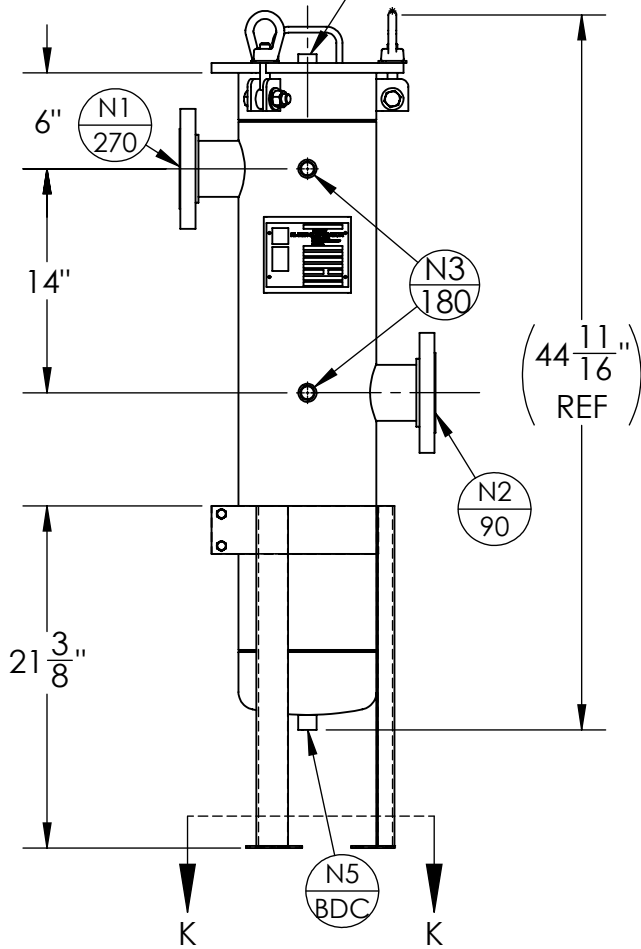


N4
180



SECTION K-K
SCALE 1:12

NOZZLE SCHEDULE

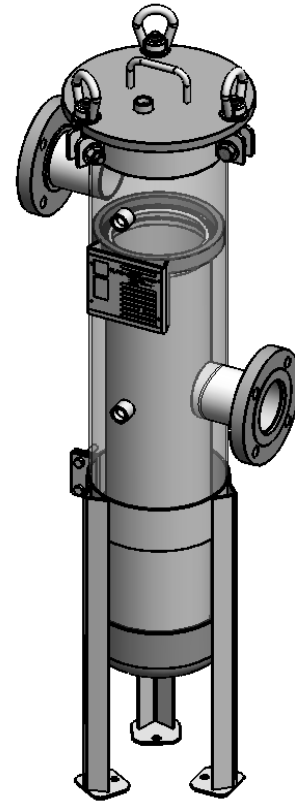
MARK	QTY	SIZE / RATING	DESCRIPTION
N1	1	3" 150# RF50	INLET
N2	1	3" 150# RF50	OUTLET
N3	2	1/2" 3000# NPT	PRESSURE GAUGE
N4	1	1/2" 3000# NPT	VENT
N5	1	1/2" 3000# NPT	CLEAN DRAIN
N6	1	-	DIRTY DRAIN

VESSEL DESIGN CONDITIONS

CODE: ASME SECTION VIII DIV. 1, 2015 EDITION	
M.A.W.P.: 150 PSI @ 400°F	M.D.M.T.: -20° F @ 150 PSI
M.A.W.P.: FV PSI @ 400°F	
CORROSION ALLOWANCE: N/A	HYDROTEST PRESS: 195 PSI
STAMP: UM	SERVICE: NON LETHAL
PWHT: N/A	RADIOGRAPHY: N/A
MATERIAL: SS304	GASKET: BUNA-N

NOTES:

1. VESSEL WILL HOUSE (QTY=1) DOUBLE LENGTH BASKET.
2. DRY WEIGHT: 117 LBS
3. FLOODED WEIGHT: 149 LBS
4. SHIPPING WEIGHT: 127 LBS
5. VESSEL VOLUME: 1 FT³



APPROVED WITH MARK-UPS APPROVED



THIRD ANGLE PROJECTION

TOLERANCES-UNLESS OTHERWISE NOTED

DECIMAL .X = ±.1"

.XX = ±.02"

.XXX = ±.005"

FRACTIONAL = ±1/8"

ANGULAR = ± 1°

MAX. MACHINED SURFACE FINISH 125/√



FIL-TREK CORPORATION

55 Stafford Court
Cambridge, Ontario
N1T 1B3
Canada

Phone: (519) 623-7448
Fax: (519) 623-8807
Email: info@fil-trek.com
Website: www.fil-trek.com

THIS DRAWING IS THE PROPERTY OF 'FIL-TREK CORPORATION' AND MUST NOT BE COPIED OR USED IN ANY WAY DETRIMENTAL TO THE CORPORATION

EQUIPMENT: SL SERIES (BAG FILTER HOUSING)

MODEL NO: S4SL112-3F-A-150

CUSTOMER:

PARENT:

DRAWN: JN

DATE: 09/06/2017

SERIAL No.

Part No. 002002-18550

REV. No. 0

CHK'D:

SCALE: NTS