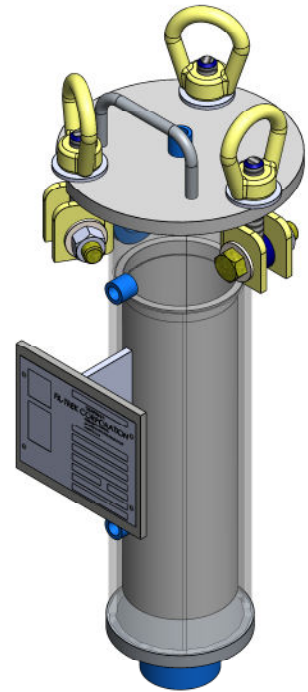
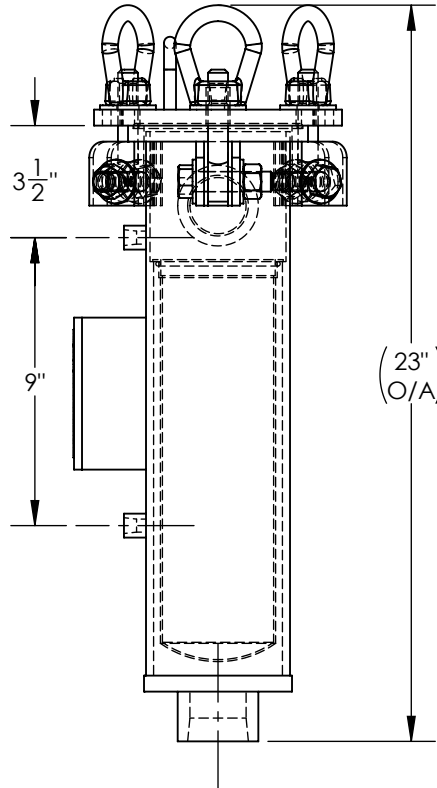
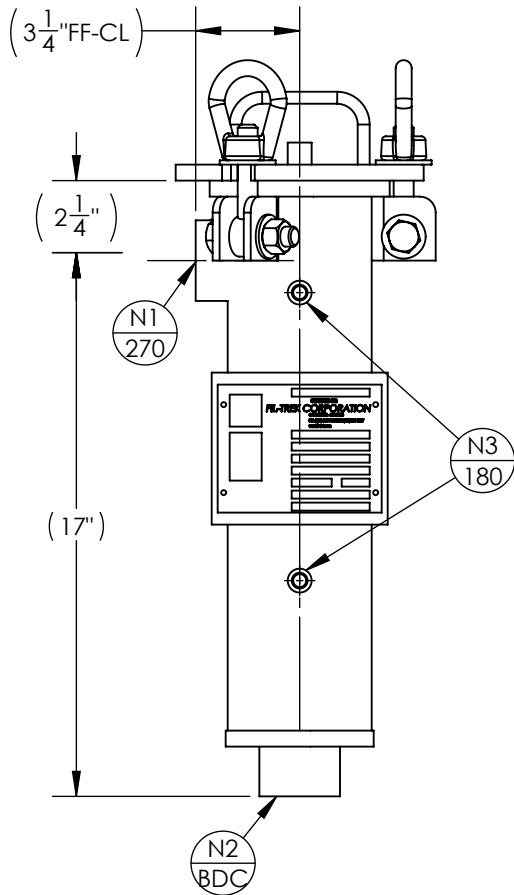


NOZZLE SCHEDULE			
MARK	QTY	SIZE / RATING	DESCRIPTION
N1	1	1 1/2" 150# NPT	INLET
N2	1	1 1/2" 150# NPT	OUTLET
N3	2	1/4" 3000# NPT	PRESSURE GAUGE
N4	1	1/4" 3000# NPT	VENT
N5	1	1/4" 3000# NPT	CLEAN DRAIN
N6	1	-	DIRTY DRAIN

VESSEL DESIGN CONDITIONS	
CODE:	ASME SECTION VIII DIV. 1, 2015 EDITION
M.A.W.P.:	150 PSI @ 400°F
M.D.M.T.:	-20° F @ 150 PSI
M.A.W.P.:	FV PSI @ 400°F
CORROSION ALLOWANCE:	NONE
HYDROTEST PRESS:	195 PSI
STAMP:	NONE
SERVICE:	NON LETHAL
PWHT:	N/A
RADIOGRAPHY:	N/A
MATERIAL:	CS
GASKET:	BUNA-N

NOTES:

1. VESSEL WILL HOUSE (QTY=1) # 4 BASKET.
2. DRY WEIGHT: 37.89 LBS
3. FLOODED WEIGHT: 50 LBS
4. SHIPPING WEIGHT: 45 LBS
5. VESSEL VOLUME: 0.2 FT³



APPROVED WITH MARK-UPS APPROVED

THIRD ANGLE PROJECTION
 TOLERANCES-UNLESS OTHERWISE NOTED
 DECIMAL .X = ±.1" .XX = ±.02" .XXX = ±.005"
 FRACTIONAL = ±1/8"
 ANGULAR = ± 1°
 MAX. MACHINED SURFACE FINISH 125/√

FIL-TREK CORPORATION
 55 Stafford Court
 Cambridge, Ontario
 N1T 1B3
 Canada
 Phone: (519) 623-7448
 Fax: (519) 623-8807
 Email: info@fil-trek.com
 Website: www.fil-trek.com

THIS DRAWING IS THE PROPERTY OF 'FIL-TREK CORPORATION' AND MUST NOT BE COPIED OR USED IN ANY WAY DETRIMENTAL TO THE CORPORATION

EQUIPMENT: CARTRIDGE FILTER VESSEL
 MODEL NO: SL102-1.5P-SW-C-150
 CUSTOMER:

PARENT:	DRAWN: GB	DATE: 16/06/2017	SERIAL No.	Part No. 002002-00093	REV. No. 0
	CHK'D:	SCALE: NTS			