

NOZZLE SCHEDULE

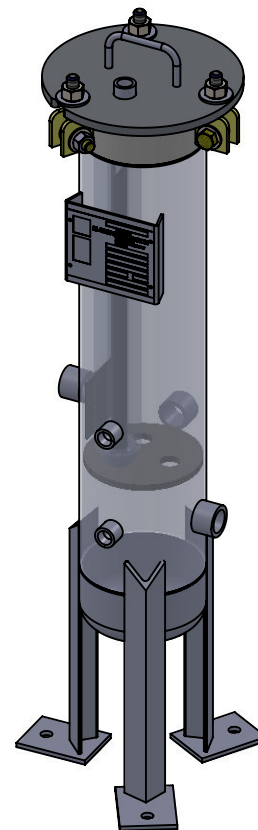
MARK	QTY	SIZE / RATING	DESCRIPTION
N1	1	1" 3000# NPT	INLET
N2	1	1" 3000# NPT	OUTLET
N3	2	1/2" 3000# NPT	PRESSURE GAUGE
N4	1	1/2" 3000# NPT	VENT
N5	1	1" 3000# NPT	CLEAN DRAIN
N6	1	1" 3000# NPT	DIRTY DRAIN

VESSEL DESIGN CONDITIONS

CODE: ASME SECTION VIII DIV. 1, 2015 EDITION			
M.A.W.P.:	150 PSI @ 400°F	M.D.M.T.:	-20° F @ 150 PSI
M.A.W.P.:	FV PSI @ 400°F		
CORROSION ALLOWANCE:	N/A	HYDROTEST PRESS:	195 PSI
STAMP:	UM	SERVICE:	NON LETHAL
PWHT:	N/A	RADIOGRAPHY:	NONE
MATERIAL:	SS316	GASKET:	BUNA

NOTES:

- VESSEL WILL HOUSE (QTY=3) 2.5" OD x 20" LG DOE CARTRIDGES.
- DRY WEIGHT: 64.43 LBS
- FLOODED WEIGHT: 90 LBS
- SHIPPING WEIGHT: 100 LBS
- VESSEL VOLUME: 0.41 C.F.



APPROVED WITH MARK-UPS  APPROVED

THIRD ANGLE PROJECTION  
 TOLERANCES-UNLESS OTHERWISE NOTED  
 DECIMAL .X = ±.1" .XX = ±.02" .XXX = ±.005"  
 FRACTIONAL = ±1/8"  
 ANGULAR = ± 1°  
 MAX. MACHINED SURFACE FINISH 125/√

**FIL-TREK CORPORATION**  
 55 Stafford Court  
 Cambridge, Ontario  
 N1T 1B3  
 Canada  
 Phone: (519) 623-7448  
 Fax: (519) 623-8807  
 Email: info@fil-trek.com  
 Website: www.fil-trek.com

THIS DRAWING IS THE PROPERTY OF 'FIL-TREK CORPORATION' AND MUST NOT BE COPIED OR USED IN ANY WAY DETRIMENTAL TO THE CORPORATION

EQUIPMENT: GL SERIES (CARTRIDGE FILTER VESSEL)  
 MODEL NO: S6GL06-003-2-1P-150  
 CUSTOMER:

PARENT:	DRAWN: GB	DATE: 19/06/2017	SERIAL No.	Part No. 001001-00363	REV. No. 0
CHK'D:	SCALE: NTS				