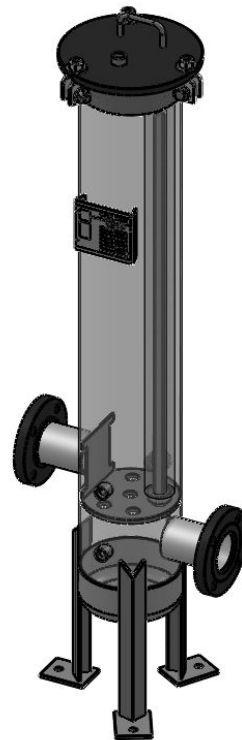


NOZZLE SCHEDULE			
MARK	QTY	SIZE / RATING	DESCRIPTION
N1	1	3" 150# RFSO	INLET
N2	1	3" 150# RFSO	OUTLET
N3	2	1/2" 3000# NPT	PRESSURE GAUGE
N4	1	1/2" 3000# NPT	VENT
N5	1	1" 3000# NPT	CLEAN DRAIN
N6	1	1" 3000# NPT	DIRTY DRAIN

VESSEL DESIGN CONDITIONS			
CODE: ASME SECTION VIII DIV. 1, 2015 EDITION			
M.A.W.P.: 150 PSI @ 250°F		M.D.M.T.: -20° F @ 150 PSI	
M.A.E.P.: 15 PSI @ 250°F			
CORROSION ALLOWANCE: NONE		HYDROTEST PRESS: 195 PSI	
STAMP: UM		SERVICE: -	
PWHT: N/A		RADIOGRAPHY: NONE	
MATERIAL: 2507		GASKET: BUNA	

- NOTES:
1. VESSEL WILL HOUSE (QTY=6) 2.5" OD x 40" LG CARTRIDGES.
 2. DRY WEIGHT: 130.79 LBS
 3. FLOODED WEIGHT: 235 LBS
 4. SHIPPING WEIGHT: 200 LBS
 5. VESSEL VOLUME: 1.60 FT³



APPROVED WITH MARK-UPS APPROVED

<p>THIRD ANGLE PROJECTION</p>	<p>FIL-TREK CORPORATION</p>	
	<p>55 Stafford Court Cambridge, Ontario N1T 1B3 Canada</p> <p>Phone: (519) 623-7448 Fax: (519) 623-8807 Email: info@fil-trek.com Website: www.fil-trek.com</p>	
<p>TOLERANCES-UNLESS OTHERWISE NOTED</p> <p>DECIMAL .X = ±.1" .XX = ±.02" .XXX = ±.005"</p> <p>FRACTIONAL = ±1/8"</p> <p>ANGULAR = ± 1°</p> <p>MAX. MACHINED SURFACE FINISH 125/√</p>		
<p>THIS DRAWING IS THE PROPERTY OF 'FIL-TREK CORPORATION' AND MUST NOT BE COPIED OR USED IN ANY WAY DETRIMENTAL TO THE CORPORATION</p>		
<p>EQUIPMENT: GL SERIES (CARTRIDGE FILTER VESSEL)</p>		
<p>MODEL NO: 2507GL08-006-4-3F-150</p>		
<p>CUSTOMER:</p>		
PARENT:	DRAWN: JN	DATE: 30/05/2017
CHK'D:	SCALE: NTS	SERIAL No. Part No. 001001-00350
		REV. No.