

SECTION A-A
SCALE 1:16

NOZZLE SCHEDULE

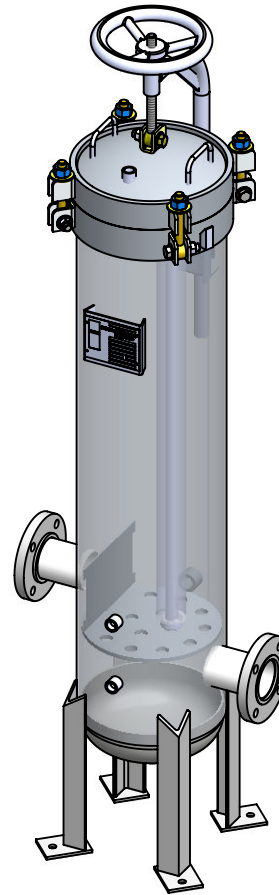
MARK	QTY	SIZE / RATING	DESCRIPTION
N1	1	2" 150# RFSO	INLET
N2	1	2" 150# RFSO	OUTLET
N3	2	1/2" 3000# NPT	PRESSURE GAUGE
N4	1	1/2" 3000# NPT	VENT
N5	1	1" 3000# NPT	CLEAN DRAIN
N6	1	1" 3000# NPT	DIRTY DRAIN

VESSEL DESIGN CONDITIONS

CODE: ASME SECTION VIII DIV. 1, 2015 EDITION	
M.A.W.P.: 150 PSI @ 400°F	M.D.M.T.: -20° F @ 150 PSI
M.A.W.P.: FV PSI @ 400°F	
CORROSION ALLOWANCE: NONE	HYDROTEST PRESS: 195 PSI
STAMP: UM	SERVICE: NON LETHAL
PWHT: N/A	RADIOGRAPHY: N/A
MATERIAL: SS316	GASKET: BUNA

NOTES:

1. VESSEL WILL HOUSE (QTY=12) 2.5"OD x 40" LG DOE CARTRIDGE.
2. DRY WEIGHT: 275.12 LBS
3. FLOODED WEIGHT: 500 LBS
4. SHIPPING WEIGHT: 300 LBS
5. VESSEL VOLUME: 3.7 C.F.



APPROVED WITH MARK-UPS APPROVED

THIRD ANGLE PROJECTION
TOLERANCES-UNLESS OTHERWISE NOTED
DECIMAL .X = ±.1"
.XX = ±.02"
.XXX = ±.005"
FRACTIONAL = ±1/8"
ANGULAR = ± 1°
MAX. MACHINED SURFACE FINISH 125/√

FIL-TREK CORPORATION
55 Stafford Court
Cambridge, Ontario
N1T 1B3
Canada
Phone: (519) 623-7448
Fax: (519) 623-8807
Email: info@fil-trek.com
Website: www.fil-trek.com

THIS DRAWING IS THE PROPERTY OF 'FIL-TREK CORPORATION' AND MUST NOT BE COPIED OR USED IN ANY WAY DETRIMENTAL TO THE CORPORATION

EQUIPMENT: GL SERIES (CARTRIDGE FILTER VESSEL)
MODEL NO: S6GL12-012-4-3F-150
CUSTOMER:

PARENT: NEW DESIGN
DRAWN: VD
DATE: 8/30/2017
SERIAL No.
Part No. 001001-00373
REV. No. 0