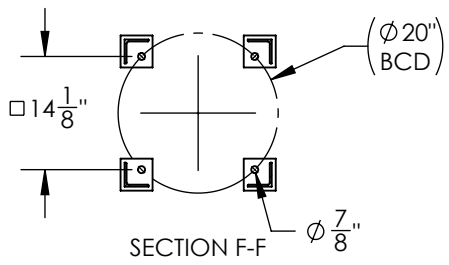
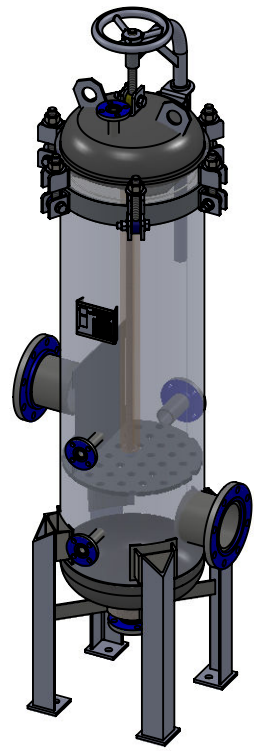
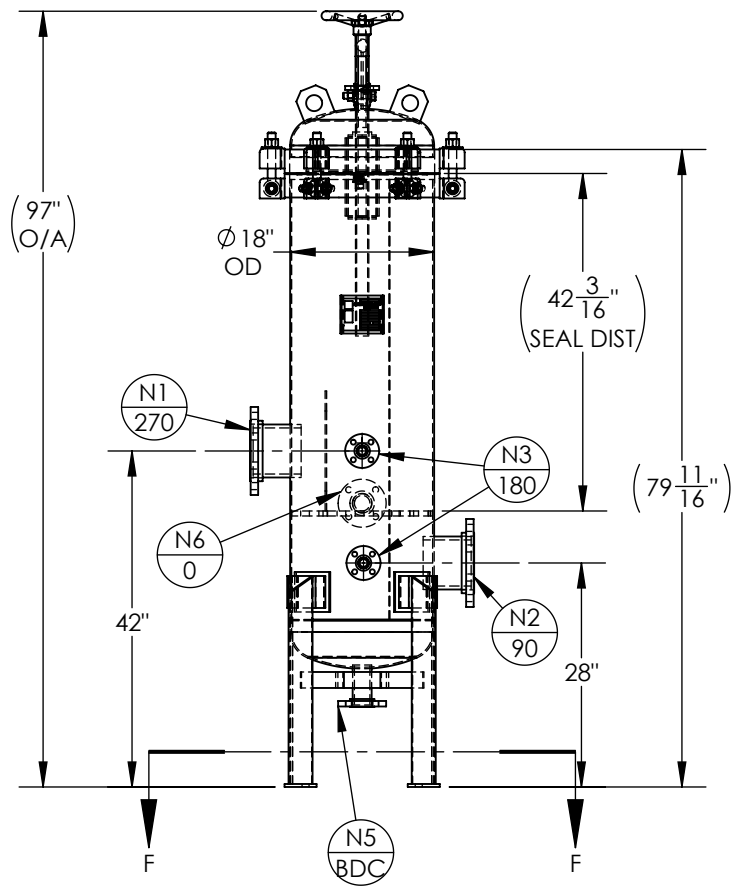


NOZZLE SCHEDULE			
MARK	QTY	SIZE / RATING	DESCRIPTION
N1	1	6" 150# RFSO	INLET
N2	1	6" 150# RFSO	OUTLET
N3	2	1" 150# RFSO	PRESSURE GAUGE
N4	1	1" 150# RFSO	VENT
N5	1	2" 150# RFSO	CLEAN DRAIN
N6	1	2" 150# RFSO	DIRTY DRAIN

VESSEL DESIGN CONDITIONS	
CODE: BEST COMMERCIAL PRACTICE	
M.A.W.P.:	100 PSI @ 200°F
M.A.W.P.:	FV PSI @ 200°F
M.D.M.T.:	-20° F @ 100 PSI
HYDROTEST PRESS:	130 PSI
MATERIAL:	FRP

- NOTES:
1. VESSEL DRY WEIGHT: **567.80** LBS.
  2. SHIPPING WEIGHT: **2200** LBS.
  3. FLOODED WEIGHT: **3500** LBS.
  4. VESSEL VOLUME: **23.9** CU. FT.
  5. VESSEL WILL HOUSE (QTY=30) 2.5"OD x 40" LG DOE CARTRIDGE.



<p>THIRD ANGLE PROJECTION</p> <p>TOLERANCES-UNLESS OTHERWISE NOTED</p> <p>DECIMAL .X = ±.1" .XX = ±.02" .XXX = ±.005"</p> <p>FRACTIONAL = ±1/8"</p> <p>ANGULAR = ± 1°</p> <p>MAX. MACHINED SURFACE FINISH 125/√</p>	<p><b>FIL-TREK CORPORATION</b></p> <p>55 Stafford Court Cambridge, Ontario N1T 1B3 Canada</p> <p>Phone: (519) 623-7448 Fax: (519) 623-8807 Email: info@fil-trek.com Website: www.fil-trek.com</p>			
	<p>THIS DRAWING IS THE PROPERTY OF 'FIL-TREK CORPORATION' AND MUST NOT BE COPIED OR USED IN ANY WAY DETRIMENTAL TO THE CORPORATION</p> <p>EQUIPMENT: CARTRIDGE FILTER HOUSING (FRP SERIES)</p> <p>MODEL NO: FRP18-030-4-6F-100</p> <p>CUSTOMER:</p>			
<p>PARENT: NEW DESIGN</p>	<p>DRAWN: MS</p> <p>CHK'D:</p>	<p>DATE: 5/26/2017</p> <p>SCALE: NTS</p>	<p>SERIAL No.</p> <p>Part No. 001003-00014</p>	<p>REV. No. 0</p>