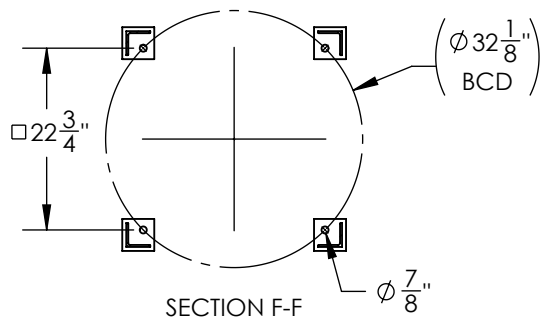
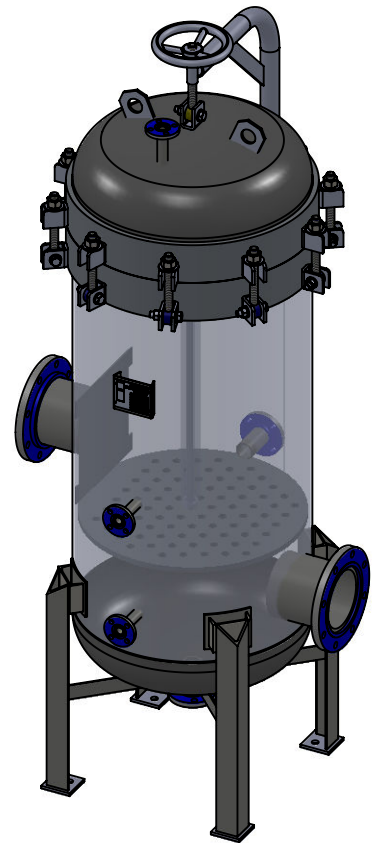
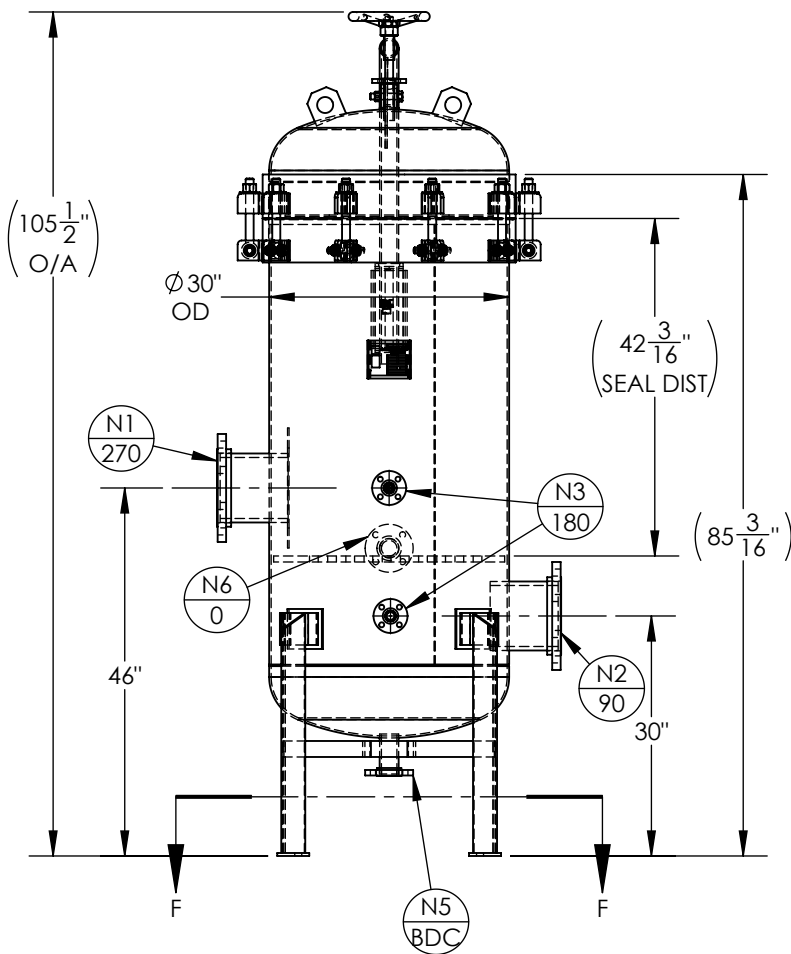


NOZZLE SCHEDULE			
MARK	QTY	SIZE / RATING	DESCRIPTION
N1	1	8" 150# RFSO	INLET
N2	1	8" 150# RFSO	OUTLET
N3	2	1" 150# RFSO	PRESSURE GAUGE
N4	1	1" 150# RFSO	VENT
N5	1	2" 150# RFSO	CLEAN DRAIN
N6	1	2" 150# RFSO	DIRTY DRAIN
VESSEL DESIGN CONDITIONS			
CODE: BEST COMMERCIAL PRACTICE			
M.A.W.P.:	100 PSI @ 200°F	GASKET:	BUNA
M.A.E.P.:	15 PSI @ 200°F		
M.D.M.T.:	-20° F @ 100 PSI		
HYDROTEST PRESS:	130 PSI		
MATERIAL:	FRP		

- NOTES:
1. VESSEL DRY WEIGHT: **1406.63** LBS.
  2. SHIPPING WEIGHT: **2200** LBS.
  3. FLOODED WEIGHT: **3500** LBS.
  4. VESSEL VOLUME: **23.9** CU. FT.
  5. VESSEL WILL HOUSE (QTY=85) 2.5"OD x 40" LG DOE CARTRIDGE.



APPROVED WITH MARK-UPS <input type="checkbox"/>		APPROVED <input type="checkbox"/>	
 THIRD ANGLE PROJECTION		 <b>FIL-TREK CORPORATION</b>	
TOLERANCES-UNLESS OTHERWISE NOTED DECIMAL .X = ±.1" .XX = ±.02" .XXX = ±.005" FRACTIONAL = ±1/8" ANGULAR = ± 1° MAX. MACHINED SURFACE FINISH 125/√		55 Stafford Court Cambridge, Ontario N1T 1B3 Canada Phone: (519) 623-7448 Fax: (519) 623-8807 Email: info@fil-trek.com Website: www.fil-trek.com	
THIS DRAWING IS THE PROPERTY OF 'FIL-TREK CORPORATION' AND MUST NOT BE COPIED OR USED IN ANY WAY DETRIMENTAL TO THE CORPORATION			
EQUIPMENT:		CARTRIDGE FILTER HOUSING	
MODEL NO:		FRP30-085-4-8F-100	
CUSTOMER:			
PARENT: NEW DESIGN	DRAWN: MS	DATE: 5/16/2017	SERIAL No. Part No. 001003-00017
CHK'D:	SCALE: NTS		REV. No. 0