

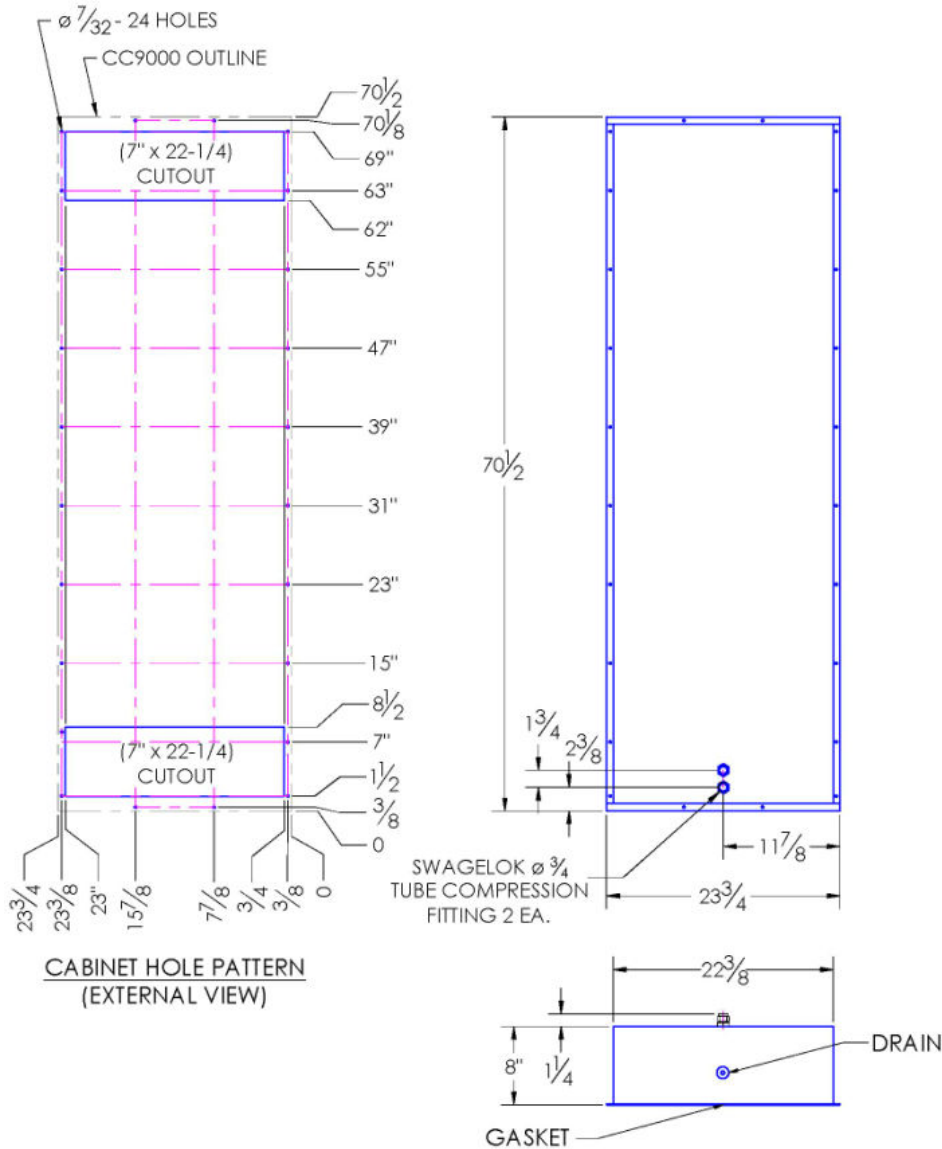
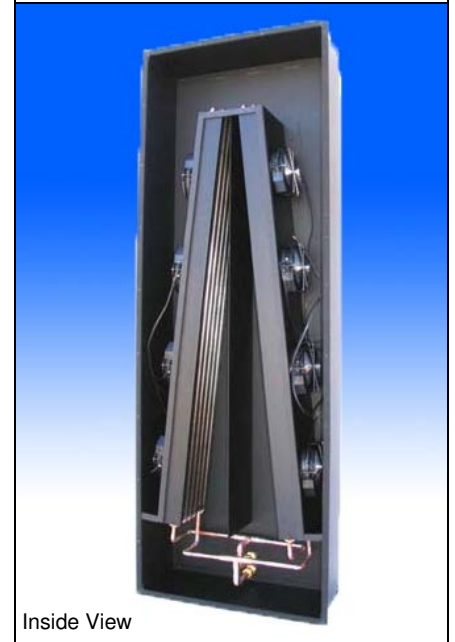
# CC9000 & CC9000P\*

## COMPACT CABINET COOLER

### AIR-TO-WATER FLUSH-MOUNT MODEL

Model	Weight	Rating @ 40°C ΔT BTU / hr	Amps Current Draw at 115 volts AC	Fan Size	Dimensions-Inches (H x W x D)
CC9000	79 lbs	57,000	2.4	8 x 6"	70-1/2 x 23-3/4 x 8

Efficiency: 417.0 Watts / °C ΔT based on average internal cabinet temperature.



- #### SPECIFICATIONS
1. CC9000 Rated cooling: 16,680 Watts mounted to an uninsulated 72" x 36" x 24" Cabinet with 2 GPM of water at 20°C, 40°C ambient air and 60°C cabinet air temperature.
  2. Designed for surface mounting on the outside of cabinet.
  3. Housing is aluminum (color is black) or stainless steel.
  4. External water inlet and outlet connections.
  5. Equipped with mounting gasket to maintain air tight seal.
  - \* 6. "P" unit is pressure tested to assure water tight seal.
  7. Available with AC (115 & 230V) and DC (12, 24, & 48V) fans.
  8. Vertical mounting only (as shown).
  9. Coolant water pressure: Pressure tested to 100 psi. Safe working pressure is 60 psi.
  10. Recommended coolant flow rate (gallons per minute): 2 GPM
  11. **For design, quote, and sizing assistance: call (866) 936-6736 or (512) 595-5700.**



**Pelmar Engineering Ltd.**

Tel. (888) 754-6329  
 sales@pelmareng.com  
 www.pelmareng.com

CC9000 & CC9000P\*

CCS-PBD-8.2.1-883322-D

Subject to change without notice.