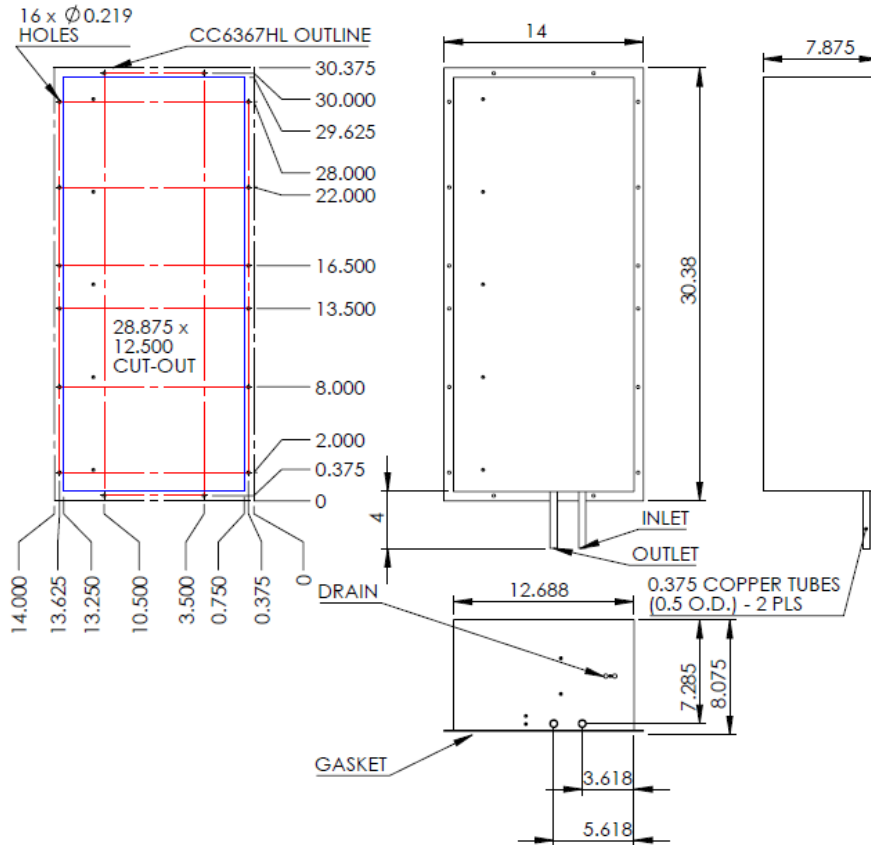


CC6367PHL-WL-IP66, xxx
COMPACT CABINET COOLER
AIR-TO-WATER FLUSH-MOUNT MODEL
HAZARDOUS LOCATION CLASS I, ZONE 2 (ATEX/IECEX)

| Model | Weight | Rating @ 20°C ΔT BTU / hr | Amps Current Draw at 115 volts AC | Fan Size | Dimensions-Inches (H x W x D) |
|----------|--------|---------------------------------|---|-------------|----------------------------------|
| CC6367HL | 52 lbs | 21,800 | 0.9 | 3 x 6" | 30-3/8 x 14 x 8 |

Efficiency: 159.7 Watts / °C ΔT based on average internal cabinet temperature.

ATEX/IECEX Certificate Reference: **DEMKO 15 ATEX 1403. IECEX UL 15.0081 X**



SPECIFICATIONS

- ATEX/IECEX certified for hazardous locations Class I, Zone 2 environments.
- CC6367PHL Rated cooling: 6,389 Watts mounted to an uninsulated 72" x 36" x 24" Cabinet with 1 GPM of water at 20°C, 40°C ambient air and 60°C cabinet air temperature
- Designed for surface mounting on outside of cabinet.
- Housing is Stainless Steel (TYPE 316 14 GAUGE).
- External water inlet and outlet connections.
- Equipped with mounting gasket to maintain air tight seal.
- Pressure tested to assure water tight seal.
- Available with AC (115 & 230V) and DC (12, 24 & 48V).
- Vertical mounting only.
- Coolant water pressure: Pressure tested to 100 psi. Safe working pressure is 60 psi.
- Recommended coolant flow rate (gallons per minute): 1 GPM
- Optional: inlet air-filter kit available upon request.
- ATEX/IECEX Standards: 60079-0, 6th Ed. + Corr. 1:2012 + Corr. 2:2013, IEC 60079-15, 4th Ed., CENELEC EN 60079-0:2012 + A11:2013 and CENELEC EN 60079-15:2010
- For design, quote, and sizing assistance: call (888) 754-6329.**



NOREN THE THERMAL MANAGEMENT EXPERTS **Pelmar Engineering Ltd.**
Tel. (888) 754-6329
sales@pelmareng.com
www.pelmareng.com
CC6367PHL-WL-IP66, xxx
UL-PBD-7.2.2-200008-C