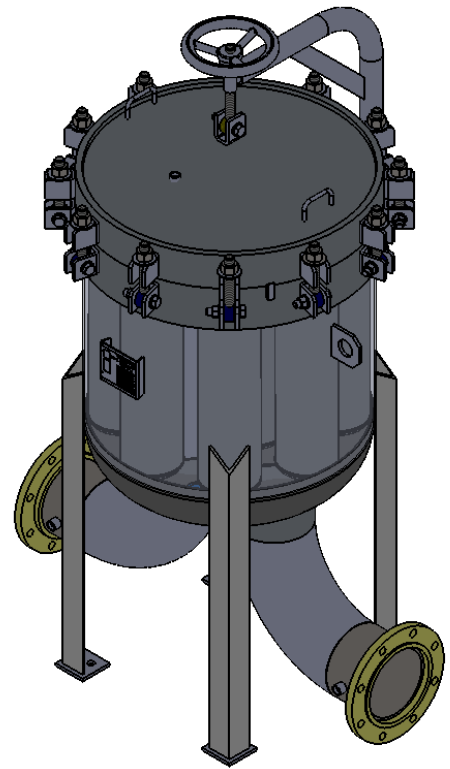
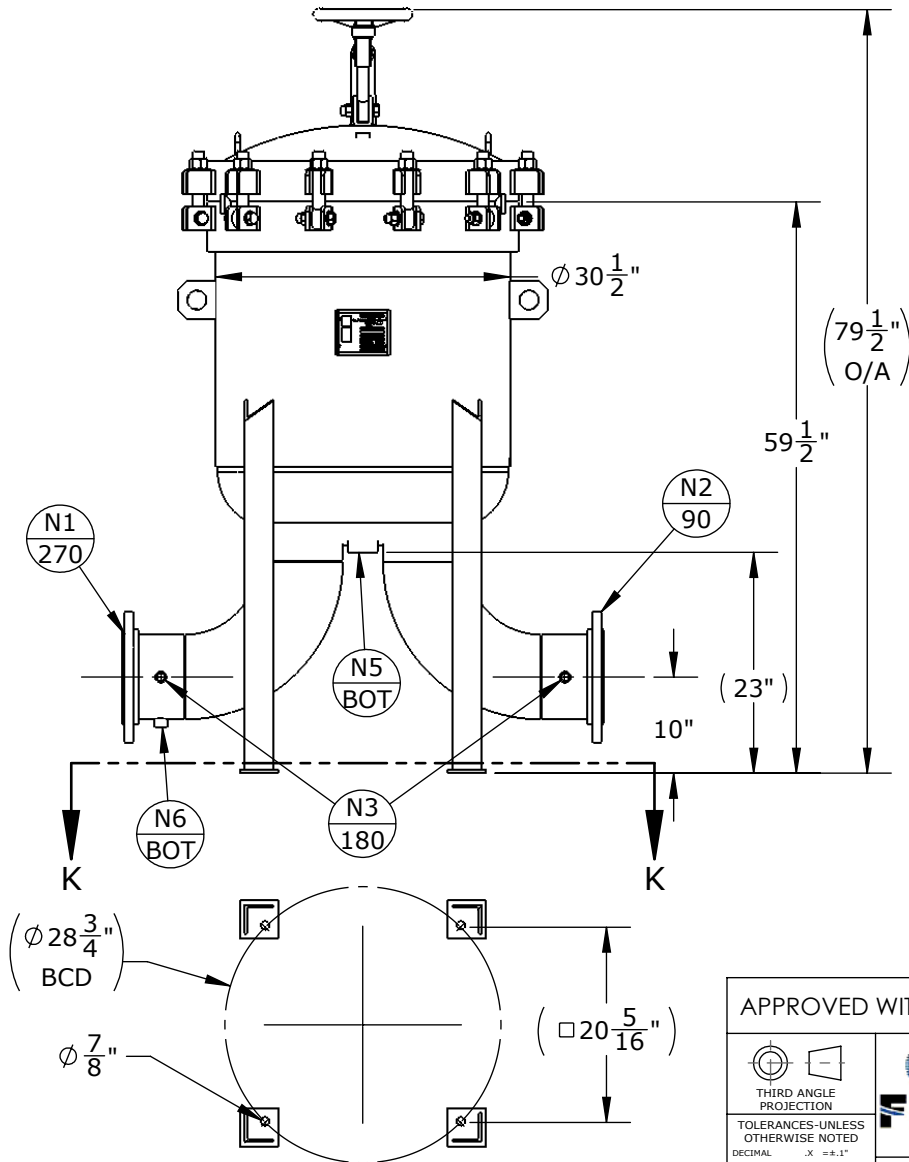


NOZZLE SCHEDULE			
MARK	QTY	SIZE / RATING	DESCRIPTION
N1	1	8" 150# RFSO	INLET
N2	1	8" 150# RFSO	OUTLET
N3	2	1/2" 3000# NPT	PRESSURE GAUGE
N4	1	1/2" 3000# NPT	VENT
N5	1	2" 3000# NPT	CLEAN DRAIN
N6	1	1/2" 3000# NPT	DIRTY DRAIN

VESSEL DESIGN CONDITIONS	
CODE:	ASME SECTION VIII DIV. 1, 2015 EDITION
M.A.W.P.:	150 PSI @ 250°F
M.D.M.T.:	-20° F @ 150 PSI
M.A.E.P.:	FV PSI @ 250°F
CORROSION ALLOWANCE:	NONE
HYDROTEST PRESS:	195 PSI
STAMP:	U
SERVICE:	NONE
PWHT:	N/A
RADIOGRAPHY:	N/A
MATERIAL:	CS
GASKET:	BUNA

- NOTES:
1. VESSEL WILL HOUSE (QTY=8) SIZE 2 BASKETS.
  2. VESSEL DRY WEIGHT: 1193.37 LBS.
  3. SHIPPING WEIGHT: 1350 LBS.
  4. FLOODED WEIGHT: 2000 LBS.
  5. VESSEL VOLUME: 12.30 FT<sup>3</sup>



SECTION K-K  
SCALE 1 : 20

APPROVED WITH MARK-UPS <input type="checkbox"/>		APPROVED <input type="checkbox"/>	
 THIRD ANGLE PROJECTION		 <b>FIL-TREK CORPORATION</b>	
TOLERANCES-UNLESS OTHERWISE NOTED DECIMAL .X = ±.1" .XX = ±.02" .XXX = ±.005" FRACTIONAL = ±1/8" ANGULAR = ± 1° MAX. MACHINED SURFACE FINISH 125/√		55 Stafford Court Cambridge, Ontario N1T 1B3 Canada Phone: (519) 623-7448 Fax: (519) 623-8807 Email: info@fil-trek.com Website: www.fil-trek.com	
THIS DRAWING IS THE PROPERTY OF 'FIL-TREK CORPORATION' AND MUST NOT BE COPIED OR USED IN ANY WAY DETRIMENTAL TO THE CORPORATION			
EQUIPMENT:		BAG FILTER VESSEL (BMB SERIES)	
MODEL NO:		BMB30-812-8F-150	
CUSTOMER:			
PARENT: NEW DESIGN	DRAWN: VD	DATE: 5/6/2017	SERIAL No. Part No. 002005-00031
CHK'D:	SCALE: NTS		REV. No. 0