

**IQ8000EX**

CE 0539 II 2 G Ex db eb ib IIB+H2 T4 Gb

**NOMINAL COOLING CAPACITY:**

8579 BTUH (2516W) @ 140-140°F (60°C-60°C)

MAXIMUM AMPS: 10.69 (2352W) @ 220V/50Hz

MAXIMUM AMPS: 10.69 (2352W) @ 220V/60Hz

MAXIMUM AMPS: 11.33 (2606W) @ 230V/50Hz

MAXIMUM AMPS: 11.33 (2606W) @ 230V/60Hz

MAXIMUM AMPS: 10.59 (2542W) @ 240V/50Hz

MAXIMUM AMPS: 11.19 (2686W) @ 240V/60Hz

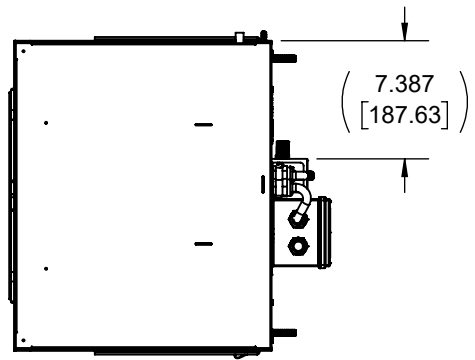
MAXIMUM OPERATING TEMPERATURE: 140°F (60°C)

MINIMUM OPERATING TEMPERATURE: -40°F (-40°C)

DIMENSIONS: 51.090" (1298MM) H x 19.376" (492MM) W x 16.090" (409MM) D

WEIGHT: 250 LBS (114KG)

REFRIGERANT CHARGE: R407C 3LB 12OZ (1701G)



A	PRODUCTION RELEASE	RCC	8/2/2018				
REV	REVISION	CHG	DATE	APP	DATE	CN #	

ITEM NUMBER	N/A	USED ON	IQ8000EX
MATERIAL	N/A		
EST WT:	lbs		
DRAWN BY	JGG	DATE	8/2/2018
		SCALE	1:12

UNLESS OTHERWISE SPECIFIED TOLERANCES	
.X	±.060
.XX	±.030
.XXX	±.015
FRACTIONAL	±1/16
ANGULAR	±1/2°
SURFACE FINISH	63
DO NOT SCALE DRAWING DIMENSIONS ARE INCHES	

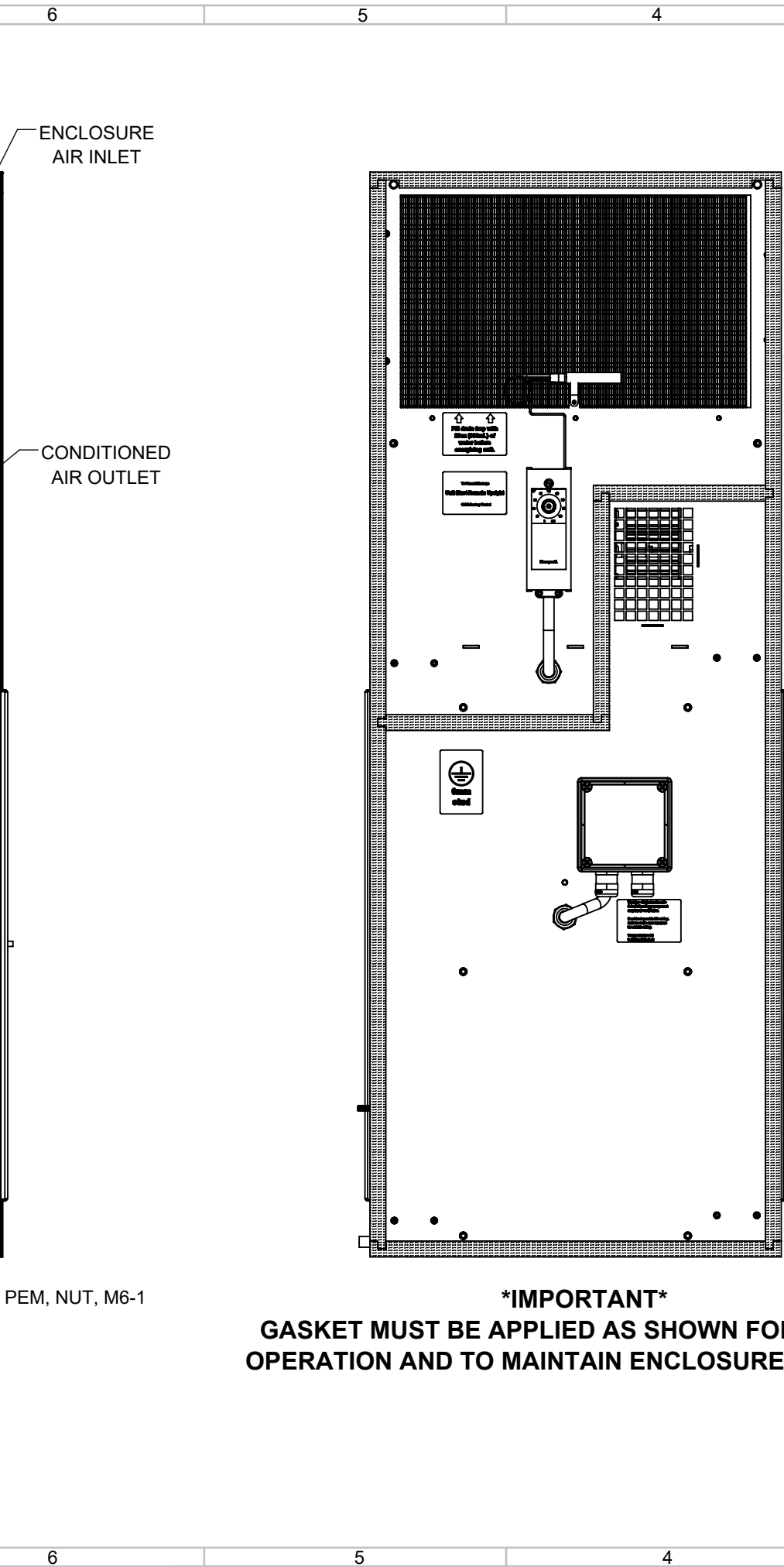
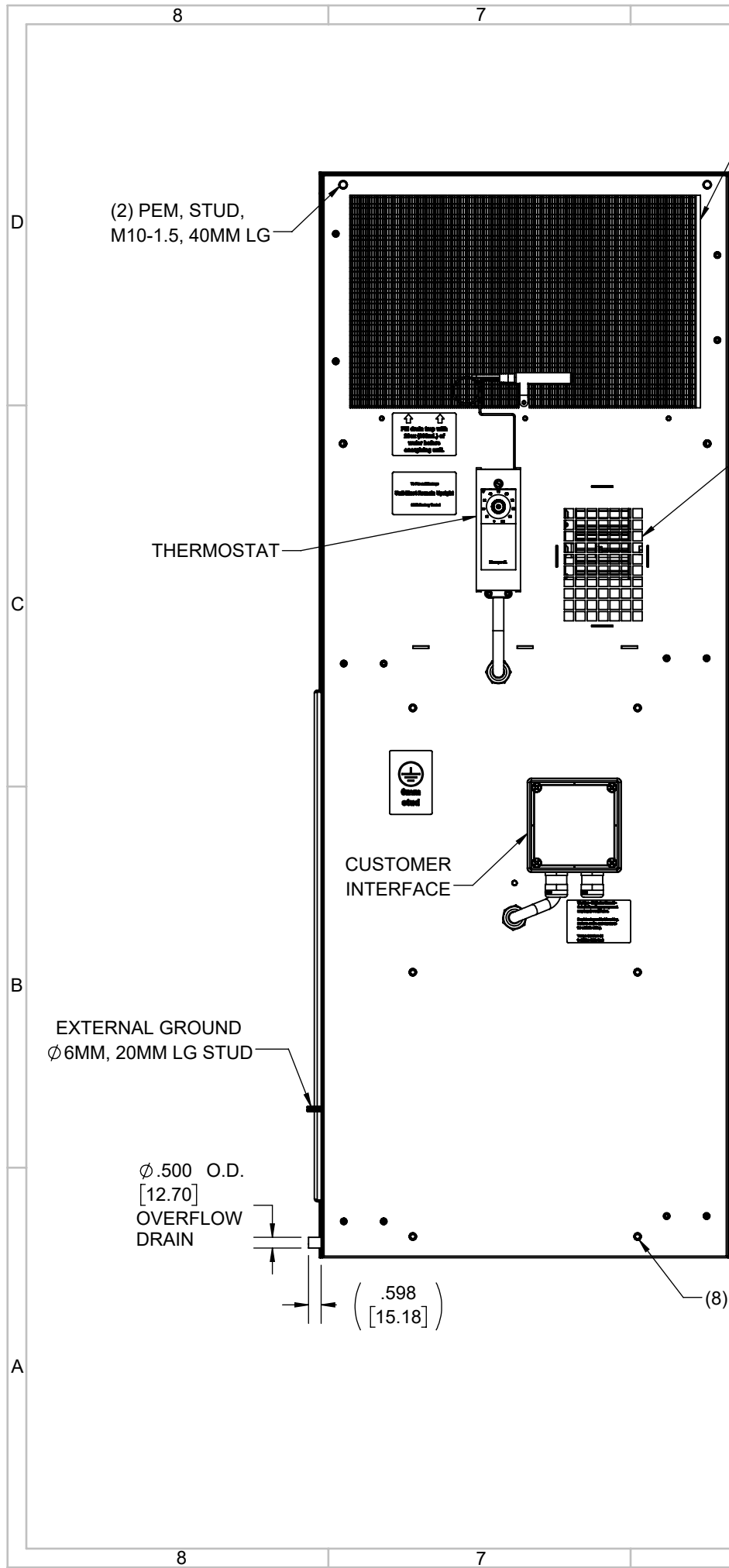
**ICE QUBE, INC.**

THIS IS A PROPRIETARY DOCUMENT. DO NOT REPRODUCE OR DISCLOSE WITHOUT THE EXPRESS WRITTEN PERMISSION OF ICE QUBE, INC.

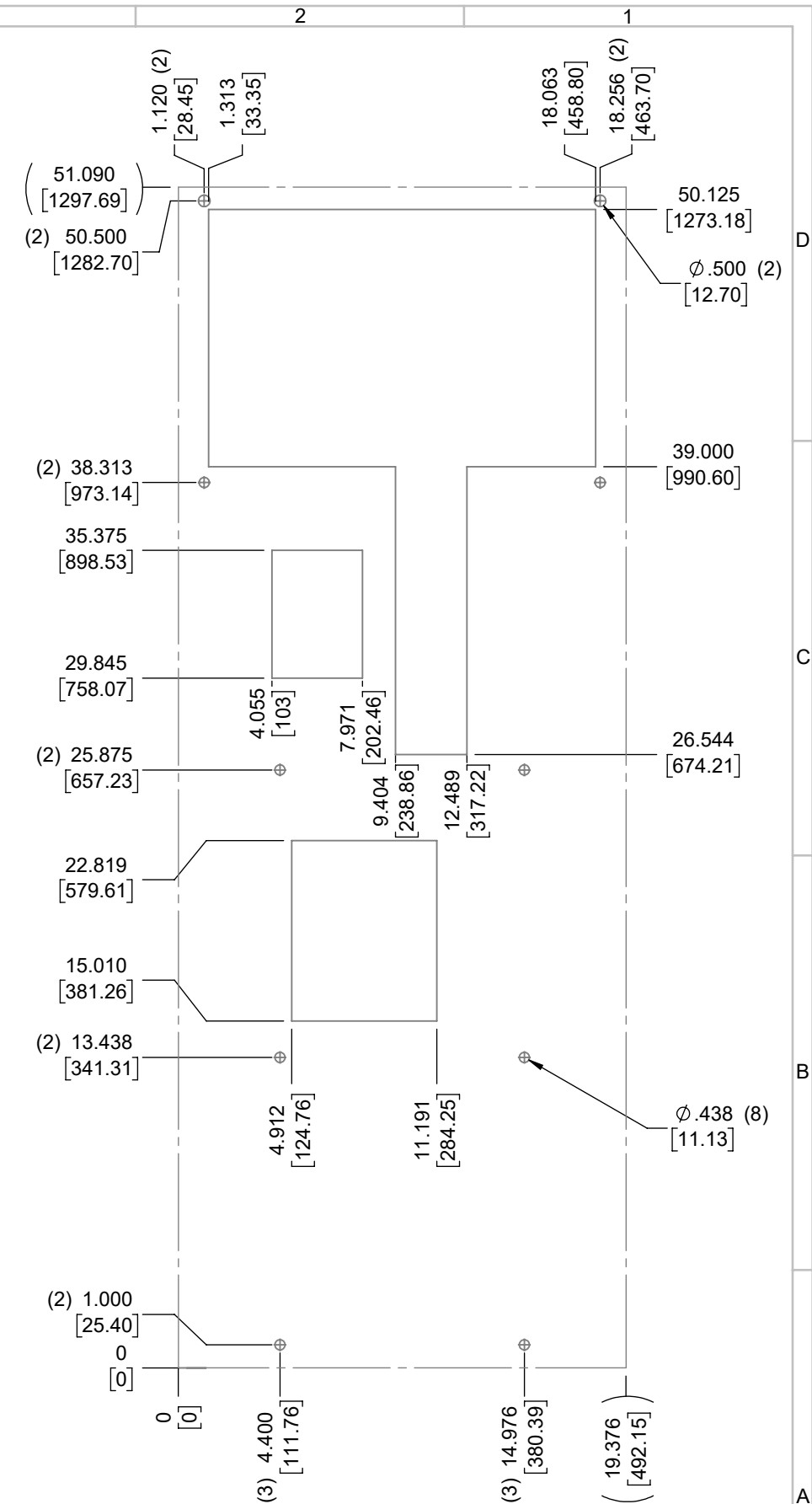
DESCRIPTION  
**IQ8000EX SPEC DRAWING**

DRAWING NUMBER  
**IQ351991**

REV  
**A**



**\*IMPORTANT\***  
**GASKET MUST BE APPLIED AS SHOWN FOR PROPER OPERATION AND TO MAINTAIN ENCLOSURE INTEGRITY**



ITEM NUMBER N/A	USED ON IQ8000EX	UNLESS OTHERWISE SPECIFIED TOLERANCES X $\pm$ .060 .XX $\pm$ .030 .XXX $\pm$ .015	<p>ICE QUBE, INC.  <small>THIS IS A PROPRIETARY DOCUMENT. DO NOT REPRODUCE OR DISCLOSE WITHOUT THE EXPRESS WRITTEN PERMISSION OF ICE QUBE, INC.</small></p>
MATERIAL N/A		FRACTIONAL $\pm$ 1/4 ANGULAR $\pm$ 1/2°	
EST WT: DRAWN BY JGG	DATE 8/2/2018	SCALE 1:7	DESCRIPTION IQ8000EX SPEC DRAWING
			DRAWING NUMBER IQ351991
			REV A