

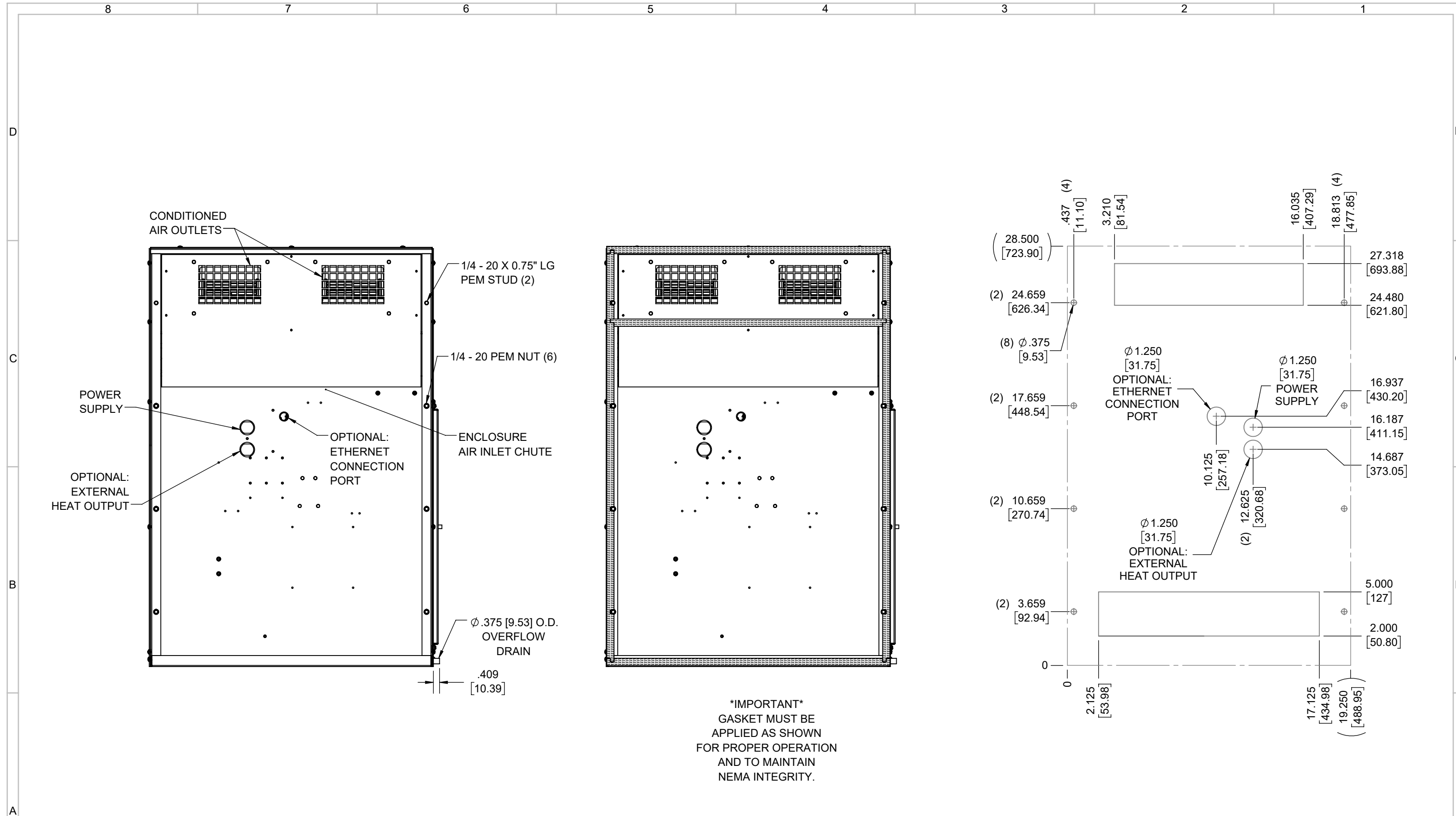
IQ6000V  
 COOLING CAPACITY: 6000 BTUH (1760W) @131°F (55°C)  
 MAXIMUM AMPS: 10.9 (1308W) @120V/60HZ  
 MAXIMUM AMPS: 4.8/5.3 (1104/1166W) @230/220V 60/50HZ  
 MAXIMUM OPERATING TEMP: 131°F (55°C)  
 MINIMUM OPERATING TEMP: -40°F (-40°C)  
 DIMENSIONS: 28.50" (724MM) H X 19.31" (490MM) W X 8.47" (215MM) D  
 WEIGHT: 87 LBS (39.5KG)

REV	CHG	DATE	APP	DATE	CN #
C		3/29/2018			1351
B		1/4/2018			
A		4/14/2017			

ITEM NUMBER	N/A	USED ON	IQ6000V
MATERIAL	N/A		
EST WT:	lbs		
DRAWN BY	RCC	DATE	4/14/2017
		SCALE	1:8

UNLESS OTHERWISE SPECIFIED TOLERANCES	
.X	±.060
.XX	±.030
.XXX	±.015
FRACTIONAL	±1/16
ANGULAR	±1/2°
SURFACE FINISH 63	
DO NOT SCALE DRAWING DIMENSIONS ARE INCHES	

**ICE QUBE, INC.**  
THIS IS A PROPRIETARY DOCUMENT. DO NOT REPRODUCE OR DISCLOSE WITHOUT THE EXPRESS WRITTEN PERMISSION OF ICE QUBE, INC.  
 DESCRIPTION  
**IQ6000V SPEC DRAWING**  
 DRAWING NUMBER  
**IQ310228**  
 REV  
**C**



**\*IMPORTANT\***  
 GASKET MUST BE  
 APPLIED AS SHOWN  
 FOR PROPER OPERATION  
 AND TO MAINTAIN  
 NEMA INTEGRITY.

EVAP. OUTLET ≈ 236 CFM  
 COND. OUTLET ≈ 410 CFM  
 SOUND LEVEL @5FT FROM UNIT @ A HT. OF 3FT = 62 dBA  
 SOUND LEVEL @2FT FROM UNIT @ A HT. OF 5FT = 63 dBA  
 CONDENSER INLET MIN. CLEARANCE 2.57"

ITEM NUMBER N/A	USED ON IQ6000V	UNLESS OTHERWISE SPECIFIED TOLERANCES X ±.060 .XX ±.030 .XXX ±.015 FRACTIONAL ±1/4 ANGULAR ±1/2°	 <small>THIS IS A PROPRIETARY DOCUMENT. DO NOT REPRODUCE OR DISCLOSE WITHOUT THE EXPRESS WRITTEN PERMISSION OF ICE QUBE, INC.</small>
MATERIAL N/A		<small>SURFACE FINISH 63</small> <small>DO NOT SCALE DRAWING DIMENSIONS ARE INCHES</small>	
EST. WT.: lbs			DESCRIPTION IQ6000V SPEC DRAWING
DRAWN BY RCC	DATE 4/14/2017	SCALE 1:6	DRAWING NUMBER IQ310228
			REV C