

IQ6000V
 COOLING CAPACITY: 6000 BTUH (1760W) @131°F (55°C)
 MAXIMUM AMPS: 2.1 (1008W) @480V/60HZ
 MAXIMUM OPERATING TEMP: 131°F (55°C)
 MINIMUM OPERATING TEMP: -40°F (-40°C)
 DIMENSIONS: 33.48" (850MM) H X 19.31" (490MM) W X 8.47" (215MM) D
 WEIGHT: 112 LBS (50.9KG)

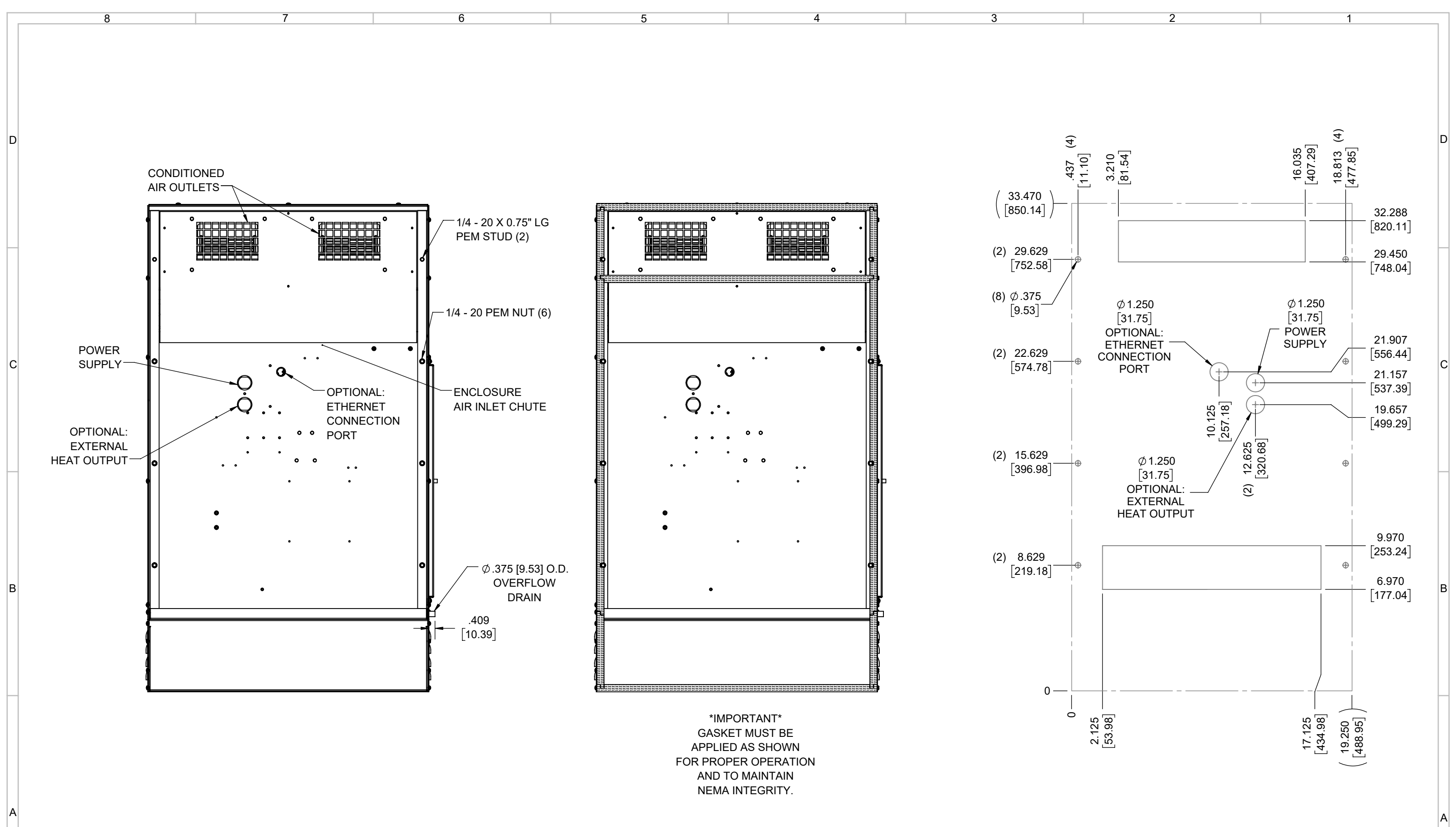
REV	CHG	DATE	APP	DATE	CN #
C		3/29/2018	RCC		1351
B		1/4/2018	RCC		
A		4/14/2017	RCC		

ITEM NUMBER	N/A
MATERIAL	N/A
EST WT:	lbs
DRAWN BY	RCC

USED ON	IQ6000V
DATE	4/14/2017
SCALE	1:8

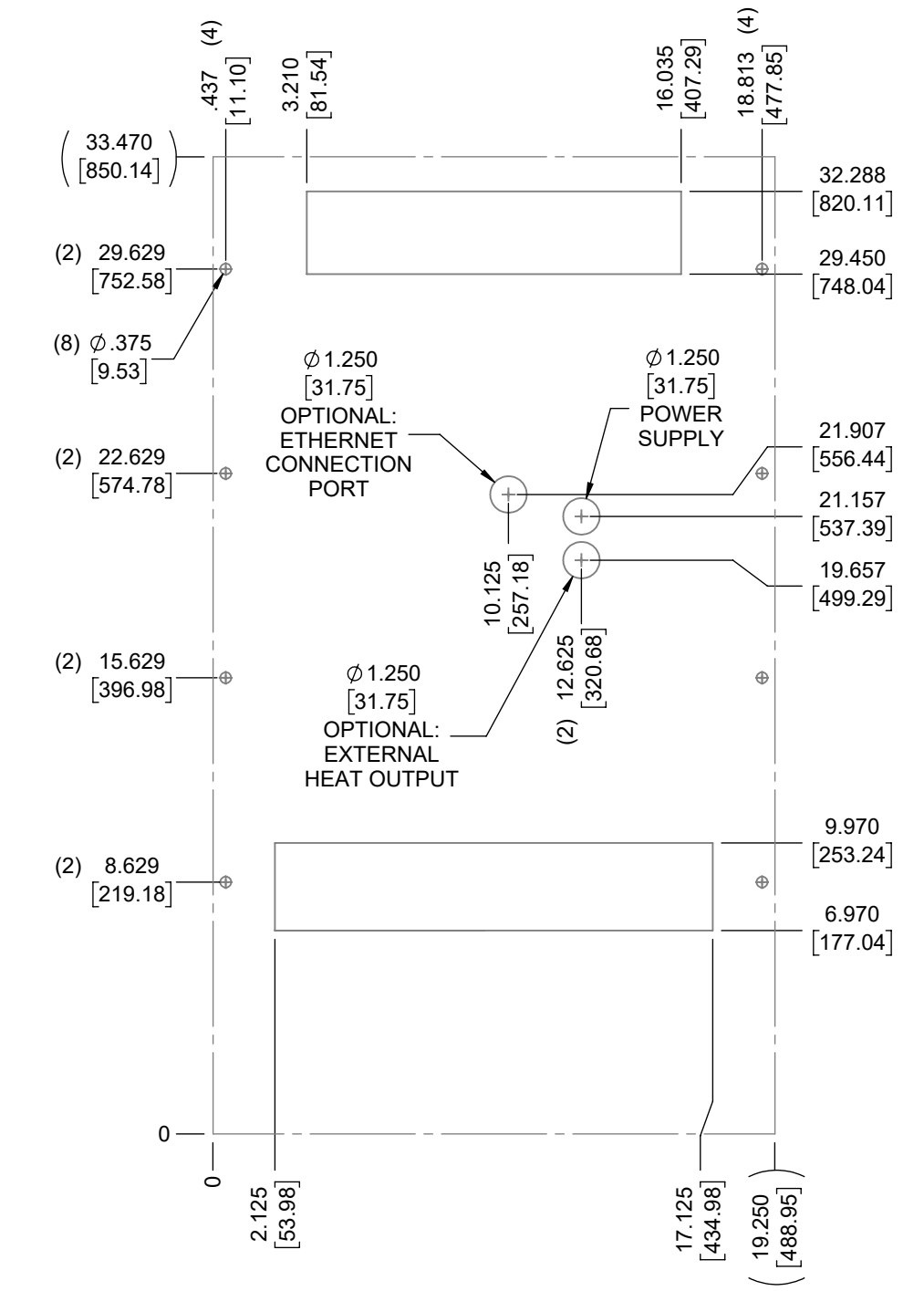
UNLESS OTHERWISE SPECIFIED TOLERANCES	
.X	±.060
.XX	±.030
.XXX	±.015
FRACTIONAL	±1/16
ANGULAR	±1/2°
SURFACE FINISH $\sqrt{63}$	
DO NOT SCALE DRAWING DIMENSIONS ARE INCHES	

ICE QUBE, INC.
THIS IS A PROPRIETARY DOCUMENT. DO NOT REPRODUCE OR DISCLOSE WITHOUT THE EXPRESS WRITTEN PERMISSION OF ICE QUBE, INC.
 DESCRIPTION
IQ6000V SPEC DRAWING, 480V
 DRAWING NUMBER
IQ350462
 REV
C



IMPORTANT
 GASKET MUST BE
 APPLIED AS SHOWN
 FOR PROPER OPERATION
 AND TO MAINTAIN
 NEMA INTEGRITY.

EVAP. OUTLET ≈ 236 CFM
 COND. OUTLET ≈ 410 CFM
 SOUND LEVEL @5FT FROM UNIT @ A HT. OF 3FT = 62 dBA
 SOUND LEVEL @2FT FROM UNIT @ A HT. OF 5FT = 63 dBA
 CONDENSER INLET MIN. CLEARANCE 2.57"



ITEM NUMBER N/A	USED ON IQ6000V	UNLESS OTHERWISE SPECIFIED TOLERANCES X ±.060 .XX ±.030 .XXX ±.015 FRACTIONAL ±1/4 ANGULAR ±1/2°	<p>THIS IS A PROPRIETARY DOCUMENT. DO NOT REPRODUCE OR DISCLOSE WITHOUT THE EXPRESS WRITTEN PERMISSION OF ICE QUBE, INC.</p>
MATERIAL N/A		<p>EST WT: lbs</p> <p>DRAWN BY: RCC DATE: 4/14/2017 SCALE: 1:6</p> <p>DO NOT SCALE DRAWING DIMENSIONS ARE INCHES</p>	
<p>DESCRIPTION IQ6000V SPEC DRAWING, 480V</p>			<p>DRAWING NUMBER IQ350462</p>
			<p>REV C</p>