

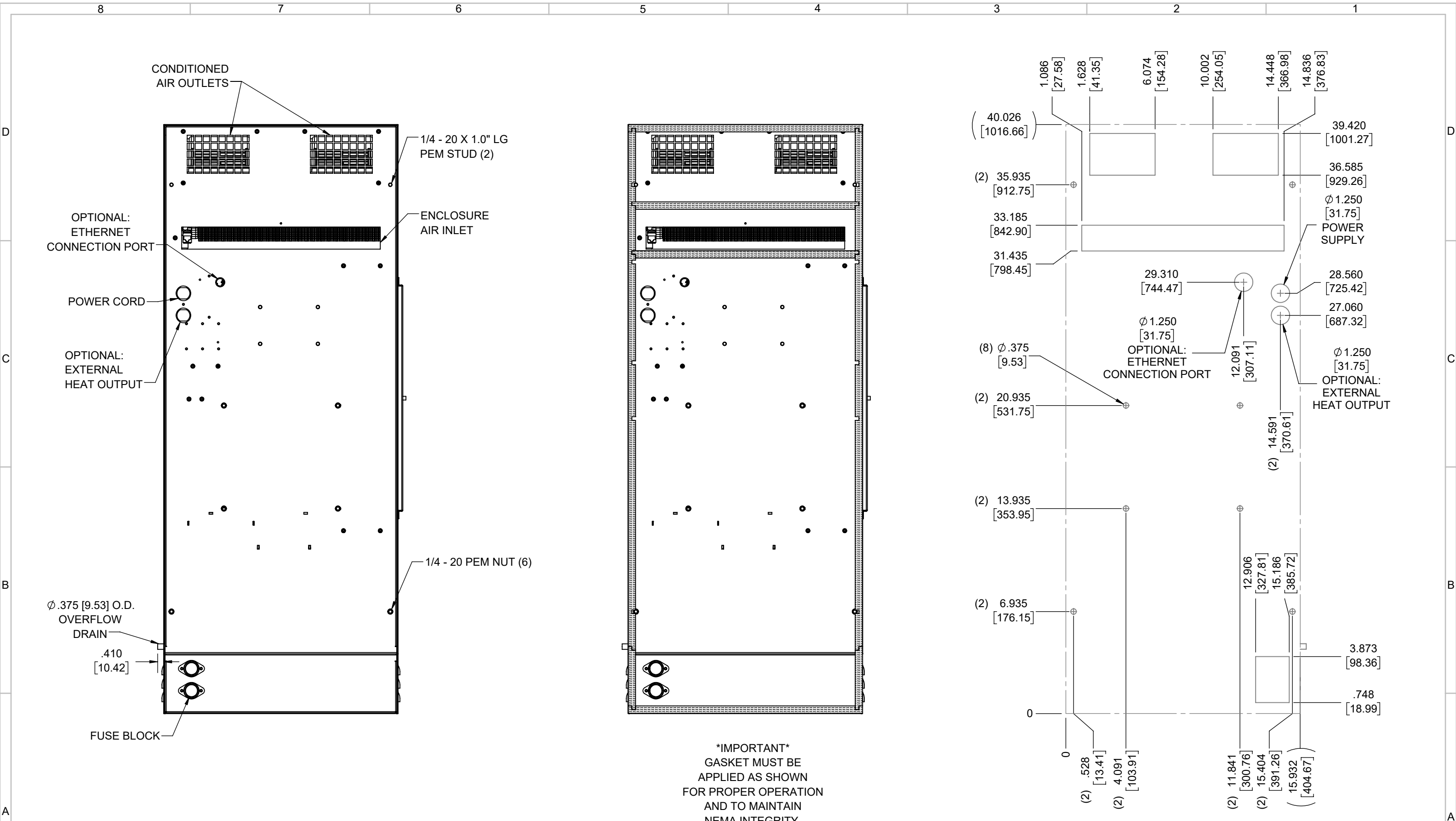
IQ6000V16  
 COOLING CAPACITY: 6000 BTUH (1760W) @131°F (55°C)  
 MAXIMUM AMPS: 2.5 (1200W) @480V/60HZ  
 MAXIMUM OPERATING TEMP: 131°F (55°C)  
 MINIMUM OPERATING TEMP: -40°F (-40°C)  
 DIMENSIONS: 40.10" (1017MM) H X 15.93" (405MM) W X 7.34" (186MM) D  
 WEIGHT: 105 LBS (47.7KG)

| REV | REVISION                           | CHG | DATE       | APP | DATE | CN # |
|-----|------------------------------------|-----|------------|-----|------|------|
| C   | ADDED CFM, dBA, AND CLEARANCE INFO | RCC | 3/23/2018  |     |      | 1351 |
| B   | ADDED WATTAGE INFO                 | RCC | 12/18/2017 |     |      |      |
| A   | REDRAWN IN SW                      | RCC | 4/4/2017   |     |      |      |

|             |     |         |           |
|-------------|-----|---------|-----------|
| ITEM NUMBER | N/A | USED ON | IQ6000V16 |
| MATERIAL    | N/A |         |           |
| EST WT:     | lbs |         |           |
| DRAWN BY    | RCC | DATE    | 4/4/2017  |
|             |     | SCALE   | 1:8       |

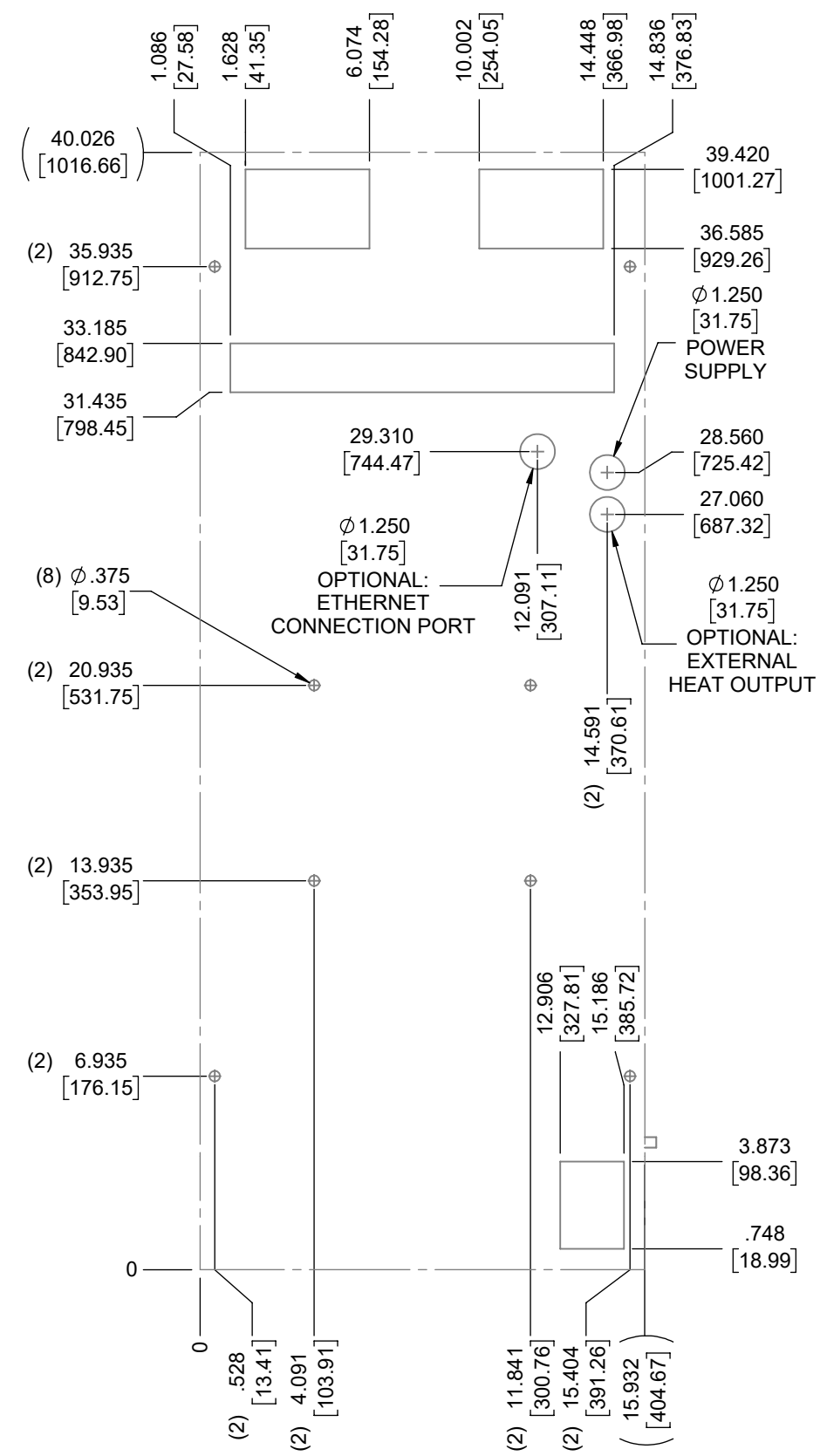
|  |       |
|--|-------|
| UNLESS OTHERWISE SPECIFIED TOLERANCES      |       |
| .X   | ±.060 |
| .XX  | ±.030 |
| .XXX                                       | ±.015 |
| FRACTIONAL                                 | ±1/16 |
| ANGULAR                                    | ±1/2° |
| SURFACE FINISH 63                          |       |
| DO NOT SCALE DRAWING DIMENSIONS ARE INCHES |       |

**ICE QUBE, INC.**  
THIS IS A PROPRIETARY DOCUMENT. DO NOT REPRODUCE OR DISCLOSE WITHOUT THE EXPRESS WRITTEN PERMISSION OF ICE QUBE, INC.  
 DESCRIPTION  
**IQ6000V16 SPEC DRAWING, 480V**  
 DRAWING NUMBER  
**IQ351382**  
 REV  
**C**



EVAP. OUTLET ≈ 236 CFM  
 COND. OUTLET ≈ 410 CFM  
 SOUND LEVEL @5FT FROM UNIT @ A HT. OF 3FT = 66 dBA  
 SOUND LEVEL @2FT FROM UNIT @ A HT. OF 5FT = 64 dBA  
 CONDENSER INLET MIN. CLEARANCE 2.34"

**\*IMPORTANT\***  
 GASKET MUST BE  
 APPLIED AS SHOWN  
 FOR PROPER OPERATION  
 AND TO MAINTAIN  
 NEMA INTEGRITY.



|                    |                      |   |  |
|--------------------|----------------------|---|--|
| ITEM NUMBER<br>N/A | USED ON<br>IQ6000V16 | UNLESS OTHERWISE SPECIFIED TOLERANCES<br>X ±.060<br>.XX ±.030<br>.XXX ±.015<br>FRACTIONAL ±1/4<br>ANGULAR ±1/2° | <p>THIS IS A PROPRIETARY DOCUMENT. DO NOT REPRODUCE OR DISCLOSE WITHOUT THE EXPRESS WRITTEN PERMISSION OF ICE QUBE, INC.</p> |
| MATERIAL<br>N/A    |                      | DESCRIPTION<br>IQ6000V16 SPEC DRAWING, 480V   |  |
| EST. WT.: lbs      | DRAWN BY<br>RCC      | DATE<br>4/4/2017  | DRAWING NUMBER<br>IQ351382   |
|                    |                      | SCALE<br>1:6  | REV<br>C   |