

IQ5500VS
 COOLING CAPACITY: 5500 BTUH (1613W) @131°F (55°C)
 MAXIMUM AMPS: 2.1 (1008W) @480V/60HZ
 MAXIMUM OPERATING TEMP: 131°F (55°C)
 MINIMUM OPERATING TEMP: -4°F (-20°C)
 DIMENSIONS: 34.12" (867MM) H X 12.27" (312MM) W X 10.39" (264MM) D
 WEIGHT: 111 LBS (50.5KG)

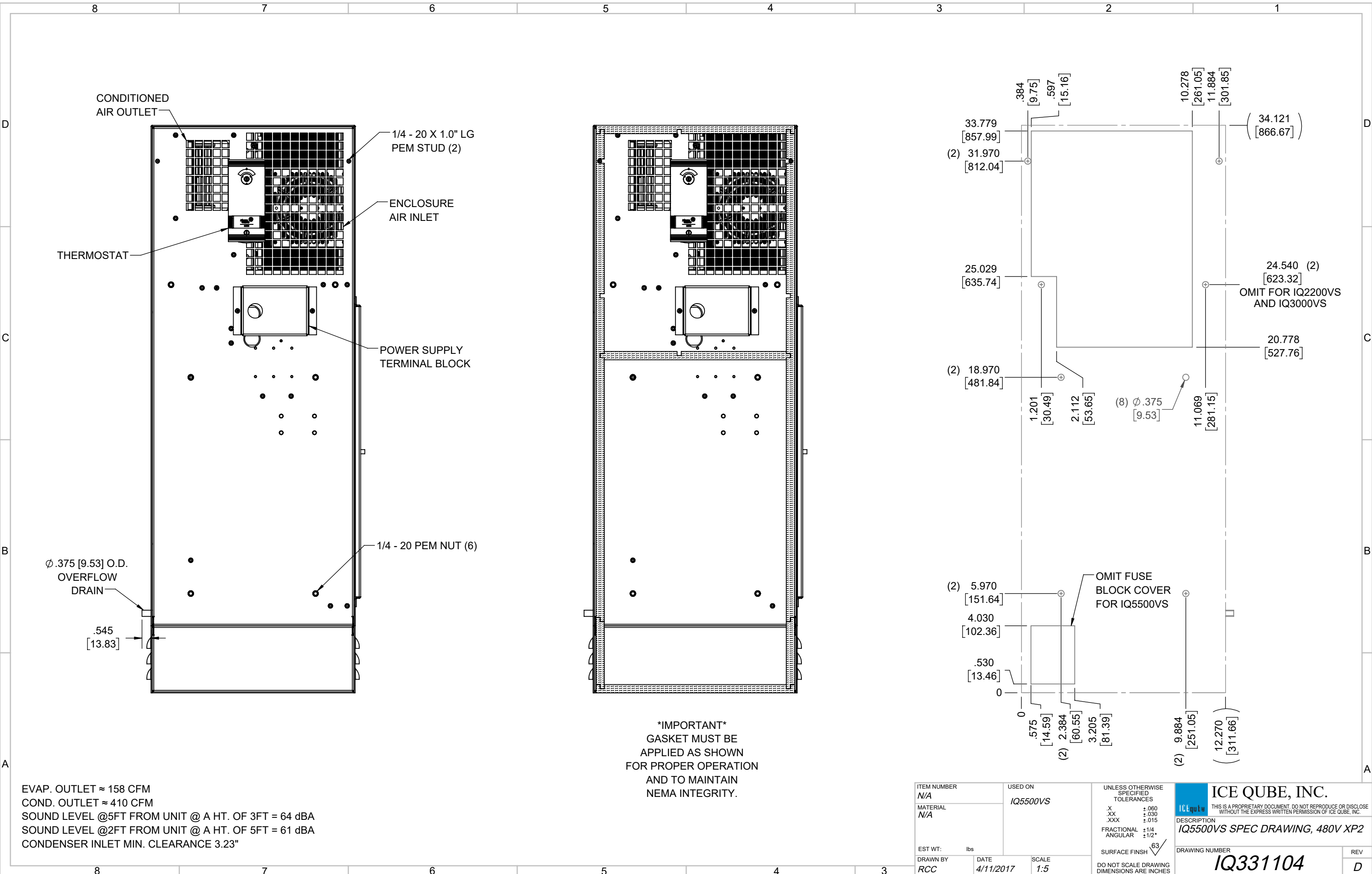
REV	REVISION	CHG	DATE	APP	DATE	CN #
D	CHANGED THERMOSTAT DIMENSIONS	NAT	2/24/2021			ECN-1434
C	ADDED CFM, dBA, AND CLEARANCE INFO	RCC	3/28/2018			1351
B	ADDED WATTAGE INFO	RCC	1/3/2018			
A	REDRAWN IN SW	RCC	4/11/2017			

ITEM NUMBER	N/A	USED ON	IQ5500VS
MATERIAL	N/A		
EST WT:	lbs		
DRAWN BY	RCC	DATE	4/11/2017
		SCALE	1:10

UNLESS OTHERWISE SPECIFIED TOLERANCES
 .X ±.060
 .XX ±.030
 .XXX ±.015
 FRACTIONAL ±1/16
 ANGULAR ±1/2°
 SURFACE FINISH 63

DO NOT SCALE DRAWING DIMENSIONS ARE INCHES

ICE QUBE, INC.
THIS IS A PROPRIETARY DOCUMENT. DO NOT REPRODUCE OR DISCLOSE WITHOUT THE EXPRESS WRITTEN PERMISSION OF ICE QUBE, INC.
 DESCRIPTION
IQ5500VS SPEC DRAWING, 480V XP2
 DRAWING NUMBER
IQ331104
 REV
D



EVAP. OUTLET ≈ 158 CFM
 COND. OUTLET ≈ 410 CFM
 SOUND LEVEL @5FT FROM UNIT @ A HT. OF 3FT = 64 dBA
 SOUND LEVEL @2FT FROM UNIT @ A HT. OF 5FT = 61 dBA
 CONDENSER INLET MIN. CLEARANCE 3.23"

IMPORTANT
 GASKET MUST BE APPLIED AS SHOWN FOR PROPER OPERATION AND TO MAINTAIN NEMA INTEGRITY.

ITEM NUMBER <i>N/A</i>		USED ON <i>IQ5500VS</i>		UNLESS OTHERWISE SPECIFIED TOLERANCES		 <small>THIS IS A PROPRIETARY DOCUMENT. DO NOT REPRODUCE OR DISCLOSE WITHOUT THE EXPRESS WRITTEN PERMISSION OF ICE QUBE, INC.</small>	
MATERIAL <i>N/A</i>				X ±.060 .XX ±.030 .XXX ±.015 FRACTIONAL ±1/4 ANGULAR ±1/2°		DESCRIPTION <i>IQ5500VS SPEC DRAWING, 480V XP2</i>	
EST WT: lbs		DATE <i>4/11/2017</i>		SCALE <i>1:5</i>		DRAWING NUMBER <i>IQ331104</i>	
DRAWN BY <i>RCC</i>				SURFACE FINISH <i>63</i>		REV <i>D</i>	
DO NOT SCALE DRAWING DIMENSIONS ARE INCHES							