

IQ5500VS  
 COOLING CAPACITY: 5500 BTUH (1613W) @131°F (55°C)  
 MAXIMUM AMPS: 10.4 (1248W) @120V/60HZ  
 MAXIMUM AMPS: 5.2/5.7 (1196/1254W) @230/220V 60/50HZ  
 MAXIMUM OPERATING TEMP: 131°F (55°C)  
 MINIMUM OPERATING TEMP: -40°F (-40°C)  
 DIMENSIONS: 30.09" (764MM) H X 12.27" (312MM) W X 10.39" (264MM) D  
 WEIGHT: 75 LBS (34.1KG)

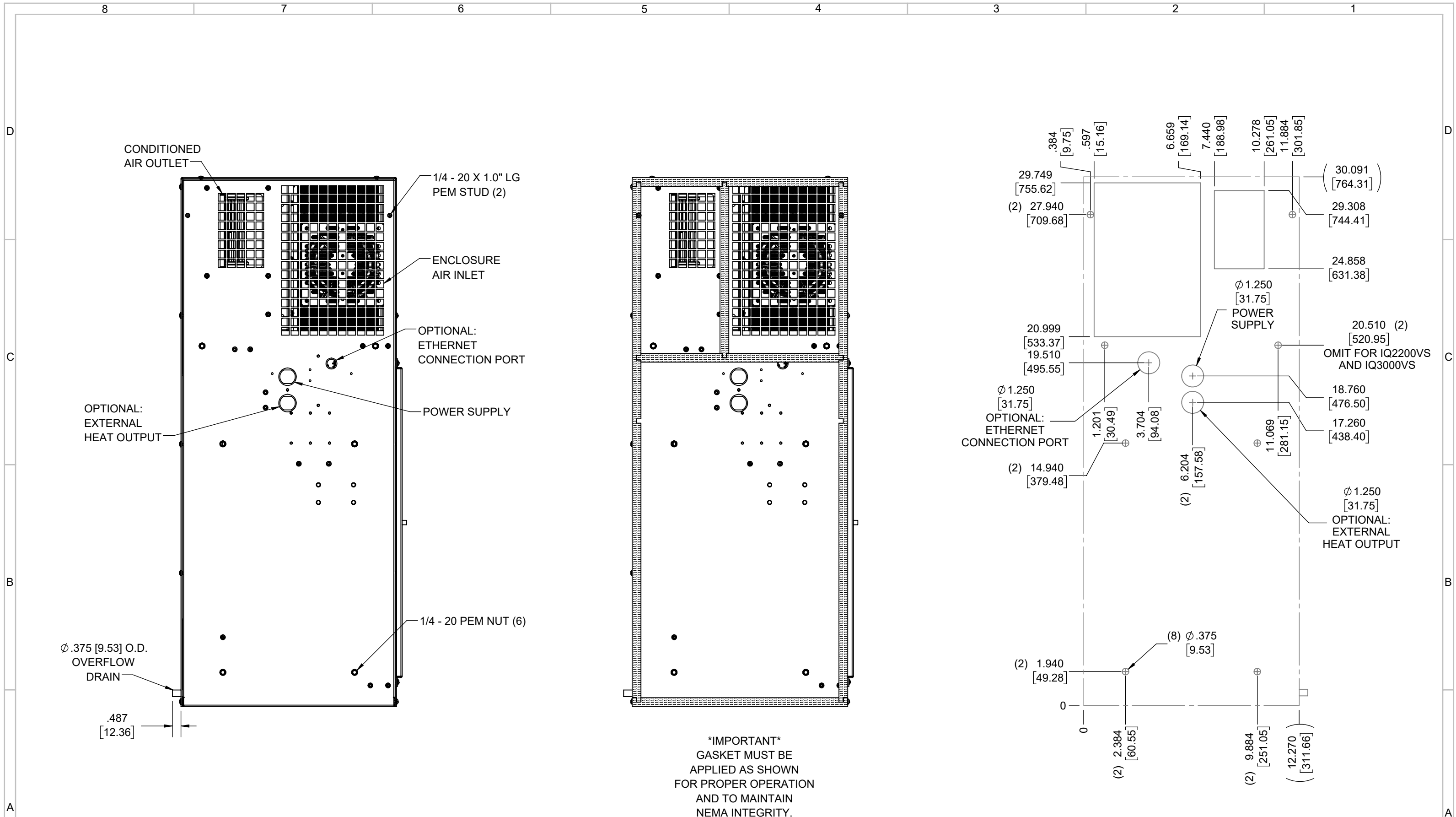
REV	REVISION	CHG	DATE	APP	DATE	CN #
C	ADDED CFM, dBA, AND CLEARANCE INFO	RCC	3/28/2018			1351
B	ADDED WATTAGE INFO	RCC	1/3/2018			
A	REDRAWN IN SW	RCC	4/11/2017			

ITEM NUMBER	N/A
MATERIAL	N/A
EST WT:	lbs
DRAWN BY	RCC

USED ON	IQ5500VS
DATE	4/11/2017
SCALE	1:7

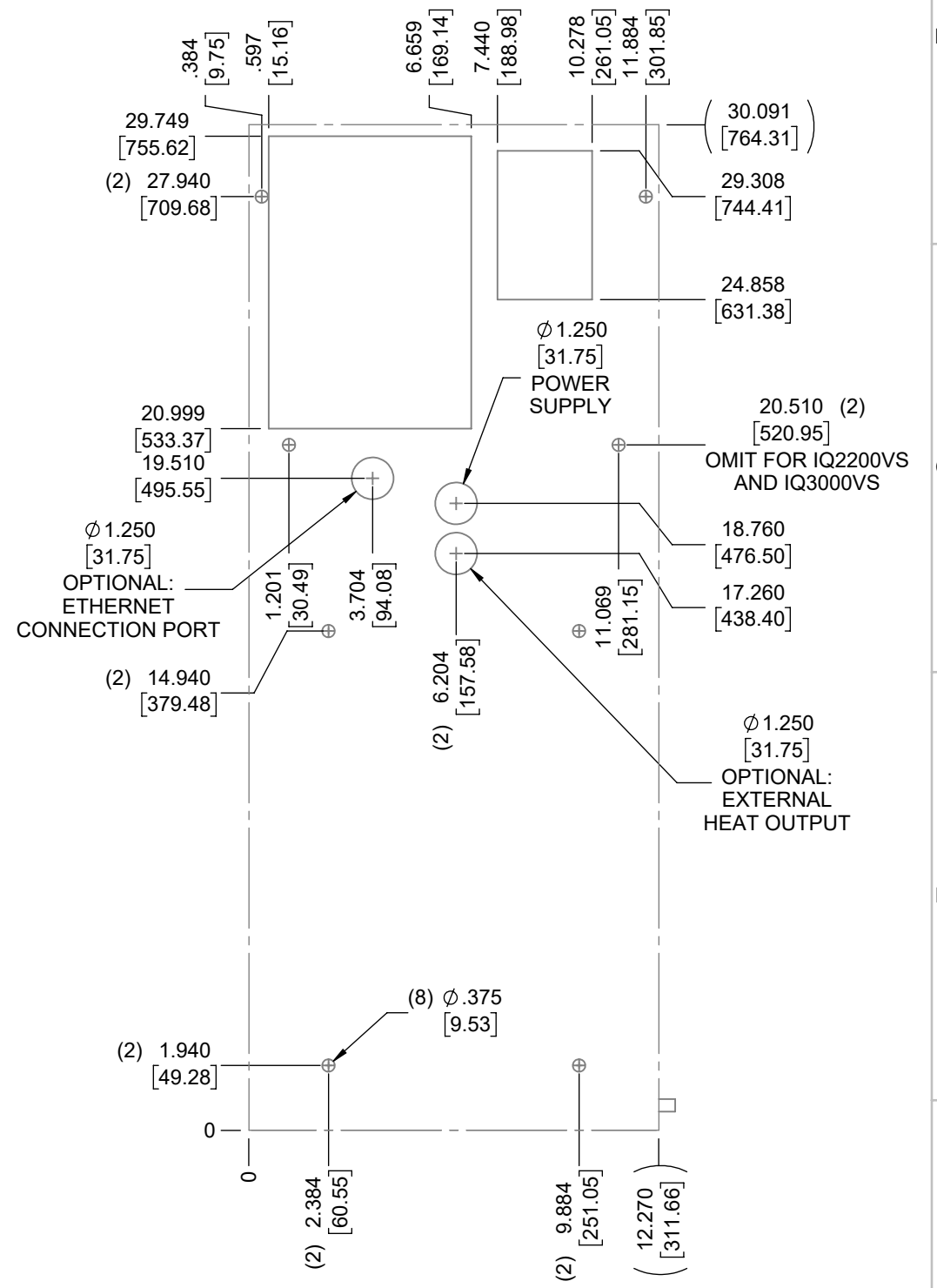
UNLESS OTHERWISE SPECIFIED TOLERANCES	
.X	±.060
.XX	±.030
.XXX	±.015
FRACTIONAL	±1/16
ANGULAR	±1/2°
SURFACE FINISH	63
DO NOT SCALE DRAWING DIMENSIONS ARE INCHES	

**ICE QUBE, INC.**  
THIS IS A PROPRIETARY DOCUMENT. DO NOT REPRODUCE OR DISCLOSE WITHOUT THE EXPRESS WRITTEN PERMISSION OF ICE QUBE, INC.  
 DESCRIPTION  
**IQ5500VS SPEC DRAWING**  
 DRAWING NUMBER  
**IQ300216**  
 REV  
**C**



**\*IMPORTANT\***  
 GASKET MUST BE  
 APPLIED AS SHOWN  
 FOR PROPER OPERATION  
 AND TO MAINTAIN  
 NEMA INTEGRITY.

EVAP. OUTLET ≈ 158 CFM  
 COND. OUTLET ≈ 410 CFM  
 SOUND LEVEL @5FT FROM UNIT @ A HT. OF 3FT = 64 dBA  
 SOUND LEVEL @2FT FROM UNIT @ A HT. OF 5FT = 61 dBA  
 CONDENSER INLET MIN. CLEARANCE 3.23"



ITEM NUMBER N/A	USED ON IQ5500VS	UNLESS OTHERWISE SPECIFIED TOLERANCES X ±.060 XX ±.030 XXX ±.015 FRACTIONAL ±1/4 ANGULAR ±1/2°	 <small>THIS IS A PROPRIETARY DOCUMENT. DO NOT REPRODUCE OR DISCLOSE WITHOUT THE EXPRESS WRITTEN PERMISSION OF ICE QUBE, INC.</small> <b>DESCRIPTION</b> <b>IQ5500VS SPEC DRAWING</b>
MATERIAL N/A	EST WT: lbs	SURFACE FINISH 63	
DRAWN BY RCC	DATE 4/11/2017	SCALE 1:5	<small>DRAWING NUMBER</small> <b>IQ300216</b>
			<small>REV</small> <b>C</b>