

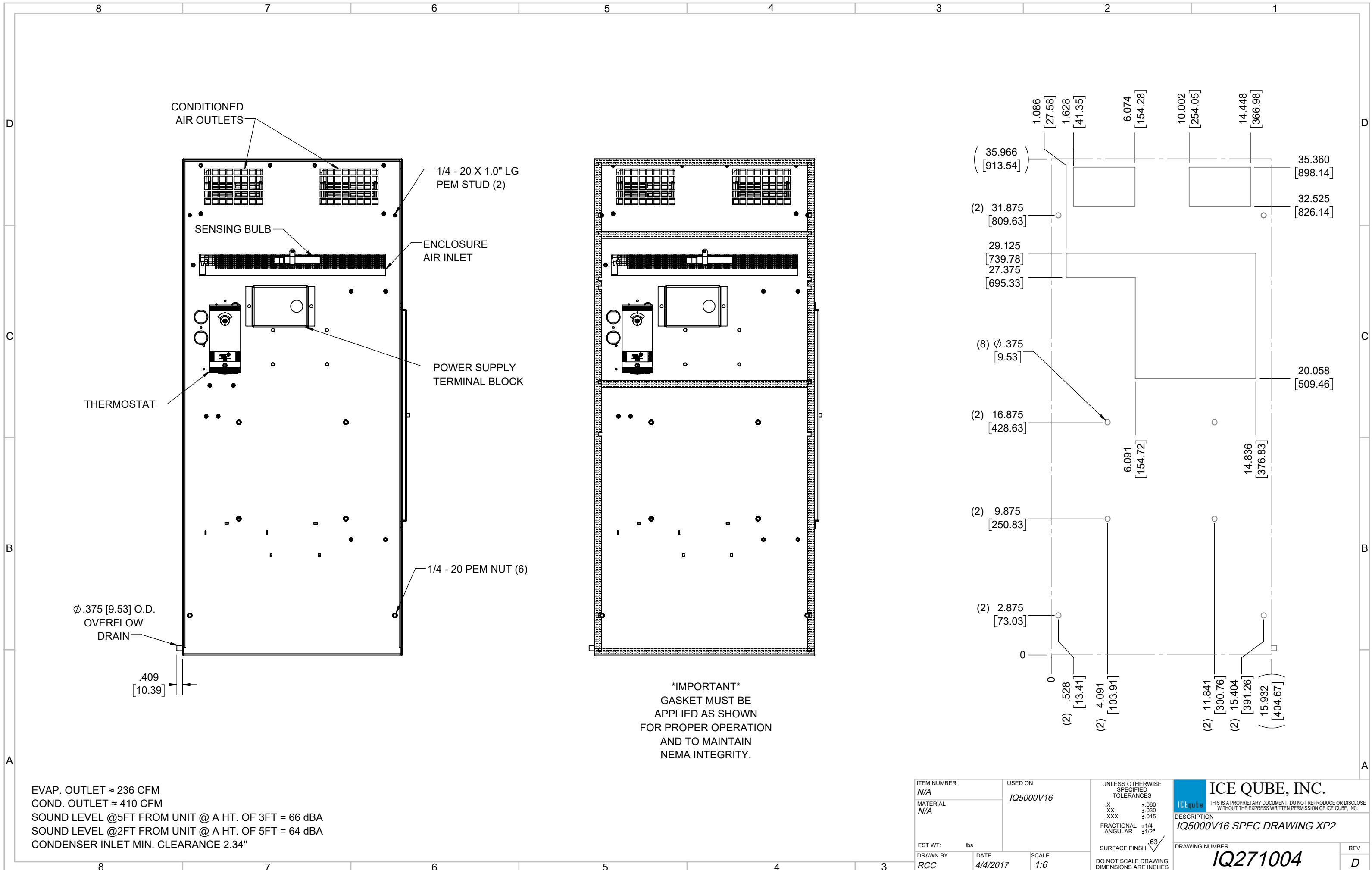
IQ5000V16
 COOLING CAPACITY: 5000 BTUH (1466W) @131°F (55°C)
 MAXIMUM AMPS: 9.7 (1164W) @120V/60HZ
 MAXIMUM AMPS: 5.0/5.5 (1150/1210W) @230/220V 60/50HZ
 MAXIMUM OPERATING TEMP: 131°F (55°C)
 MINIMUM OPERATING TEMP: -4°F (-20°C)
 DIMENSIONS: 35.97" (914MM) H X 15.93" (405MM) W X 7.34" (186MM) D
 WEIGHT: 105 LBS (47.7KG)

REV	REVISION	CHG	DATE	APP	DATE	CN #
D	CHANGED THERMOSTAT DIMENSIONS	NAT	2/18/2021			ECN-1434
C	ADDED CFM, dBA, AND CLEARANCE INFO	RCC	3/22/2018			1351
B	ADDED WATTAGE INFO	RCC	12/15/2017			
A	REDRAWN IN SW	RCC	4/4/2017			

ITEM NUMBER	N/A	USED ON	IQ5000V16
MATERIAL	N/A		
EST WT:	lbs		
DRAWN BY	RCC	DATE	4/4/2017
		SCALE	1:9

UNLESS OTHERWISE SPECIFIED TOLERANCES
 .X ±.060
 .XX ±.030
 .XXX ±.015
 FRACTIONAL ±1/16
 ANGULAR ±1/2°
 SURFACE FINISH 63
 DO NOT SCALE DRAWING DIMENSIONS ARE INCHES

ICE QUBE, INC.
THIS IS A PROPRIETARY DOCUMENT. DO NOT REPRODUCE OR DISCLOSE WITHOUT THE EXPRESS WRITTEN PERMISSION OF ICE QUBE, INC.
 DESCRIPTION
IQ5000V16 SPEC DRAWING XP2
 DRAWING NUMBER
IQ271004
 REV
D



IMPORTANT
 GASKET MUST BE
 APPLIED AS SHOWN
 FOR PROPER OPERATION
 AND TO MAINTAIN
 NEMA INTEGRITY.

EVAP. OUTLET ≈ 236 CFM
 COND. OUTLET ≈ 410 CFM
 SOUND LEVEL @5FT FROM UNIT @ A HT. OF 3FT = 66 dBA
 SOUND LEVEL @2FT FROM UNIT @ A HT. OF 5FT = 64 dBA
 CONDENSER INLET MIN. CLEARANCE 2.34"

ITEM NUMBER N/A	USED ON IQ5000V16	UNLESS OTHERWISE SPECIFIED TOLERANCES X ±.060 .XX ±.030 .XXX ±.015 FRACTIONAL ±1/4 ANGULAR ±1/2°	ICE QUBE, INC. <small>THIS IS A PROPRIETARY DOCUMENT. DO NOT REPRODUCE OR DISCLOSE WITHOUT THE EXPRESS WRITTEN PERMISSION OF ICE QUBE, INC.</small> DESCRIPTION IQ5000V16 SPEC DRAWING XP2 DRAWING NUMBER IQ271004
MATERIAL N/A	SCALE 1:6	SURFACE FINISH 63	
EST. WT. lbs	DATE 4/4/2017	DO NOT SCALE DRAWING DIMENSIONS ARE INCHES	REV D
DRAWN BY RCC			