

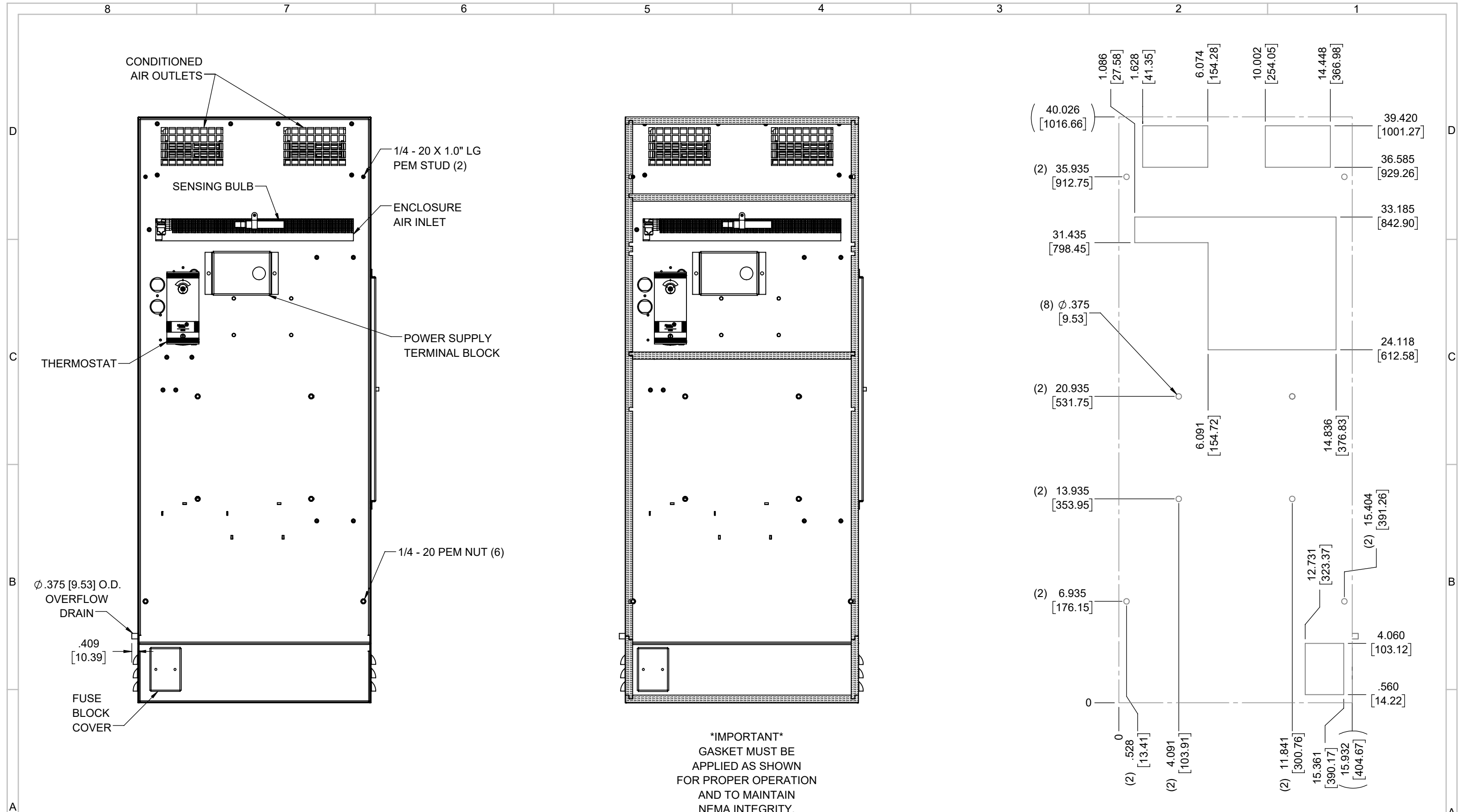
IQ5000V16  
 COOLING CAPACITY: 5000 BTUH (1466W) @131°F (55°C)  
 MAXIMUM AMPS: 2.4 (1152W) @480V 60HZ  
 MAXIMUM OPERATING TEMP: 131°F (55°C)  
 MINIMUM OPERATING TEMP: -4°F (-20°C)  
 DIMENSIONS: 40.10" (1017MM) H X 15.93" (405MM) W X 7.34" (186MM) D  
 WEIGHT: 125 LBS (56.8KG)

REV	REVISION	CHG	DATE	APP	DATE	CN #
D	CHANGED THERMOSTAT DIMENSIONS	NAT	2/23/2021			ECN-1434
C	ADDED CFM, dBA, AND CLEARANCE INFO	RCC	3/23/2018			1351
B	ADDED WATTAGE INFO	RCC	12/15/2017			
A	REDRAWN IN SW	RCC	4/4/2017			

ITEM NUMBER N/A	USED ON IQ5000V16
MATERIAL N/A	
EST WT: lbs	
DRAWN BY RCC	DATE 4/4/2017
	SCALE 1:9

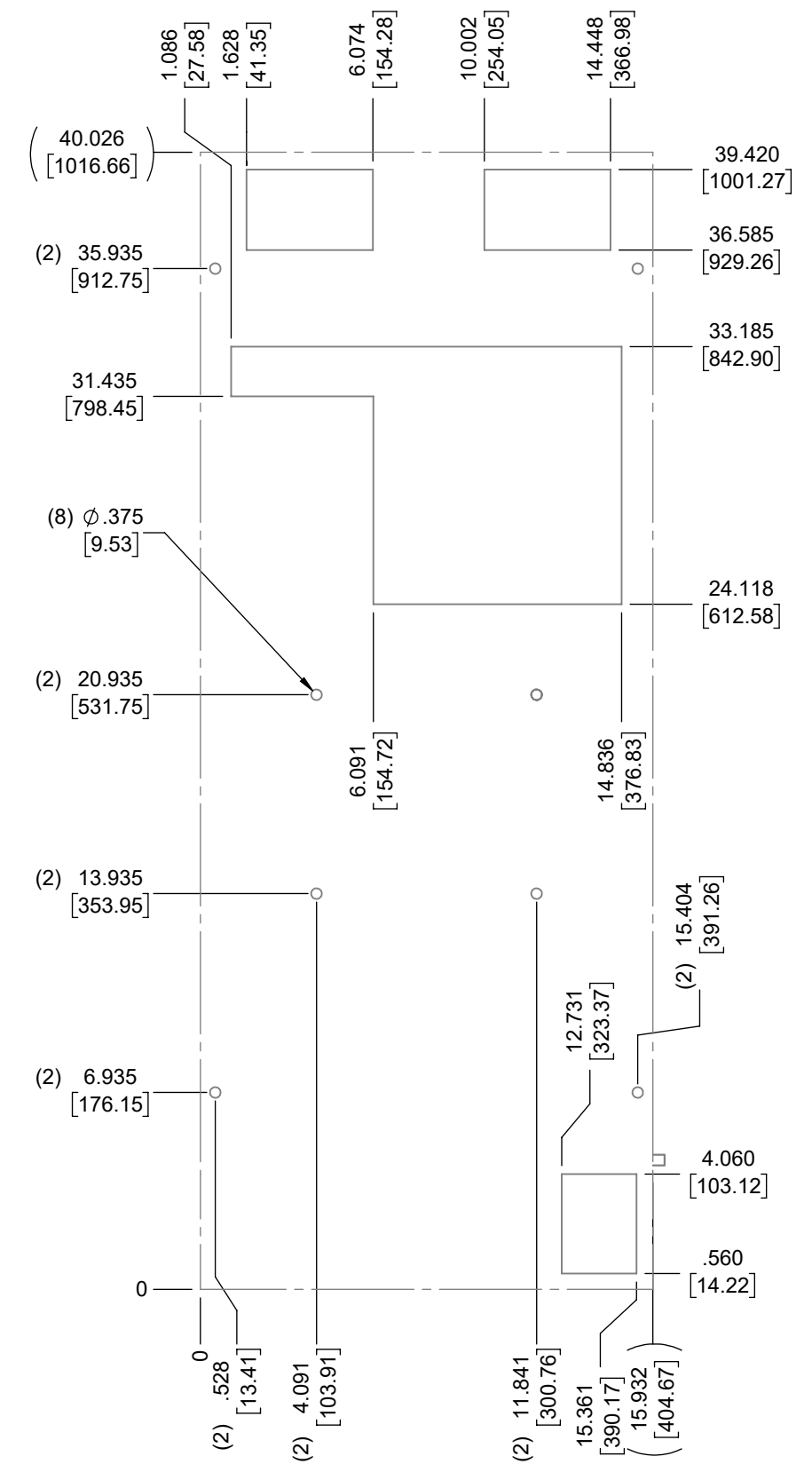
UNLESS OTHERWISE SPECIFIED TOLERANCES	
.X	±.060
.XX	±.030
.XXX	±.015
FRACTIONAL	±1/16
ANGULAR	±1/2°
SURFACE FINISH <sup>63</sup>	
DO NOT SCALE DRAWING DIMENSIONS ARE INCHES	

**ICE QUBE, INC.**  
THIS IS A PROPRIETARY DOCUMENT. DO NOT REPRODUCE OR DISCLOSE WITHOUT THE EXPRESS WRITTEN PERMISSION OF ICE QUBE, INC.  
 DESCRIPTION  
**IQ5000V16 SPEC DRAWING, 480V XP2**  
 DRAWING NUMBER  
**IQ320101**



EVAP. OUTLET ≈ 236 CFM  
 COND. OUTLET ≈ 410 CFM  
 SOUND LEVEL @5FT FROM UNIT @ A HT. OF 3FT = 66 dBA  
 SOUND LEVEL @2FT FROM UNIT @ A HT. OF 5FT = 64 dBA  
 CONDENSER INLET MIN. CLEARANCE 2.34"

**\*IMPORTANT\***  
 GASKET MUST BE  
 APPLIED AS SHOWN  
 FOR PROPER OPERATION  
 AND TO MAINTAIN  
 NEMA INTEGRITY.



ITEM NUMBER N/A	USED ON IQ5000V16	UNLESS OTHERWISE SPECIFIED TOLERANCES X ±.060 .XX ±.030 .XXX ±.015 FRACTIONAL ±1/4 ANGULAR ±1/2°	<p>THIS IS A PROPRIETARY DOCUMENT. DO NOT REPRODUCE OR DISCLOSE WITHOUT THE EXPRESS WRITTEN PERMISSION OF ICE QUBE, INC.</p>
MATERIAL N/A		<p>EST WT: lbs</p> <p>DRAWN BY: RCC</p> <p>DATE: 4/4/2017</p> <p>SCALE: 1:6</p> <p>DO NOT SCALE DRAWING DIMENSIONS ARE INCHES</p>	
DESCRIPTION IQ5000V16 SPEC DRAWING, 480V XP2			DRAWING NUMBER IQ320101
REV D			