

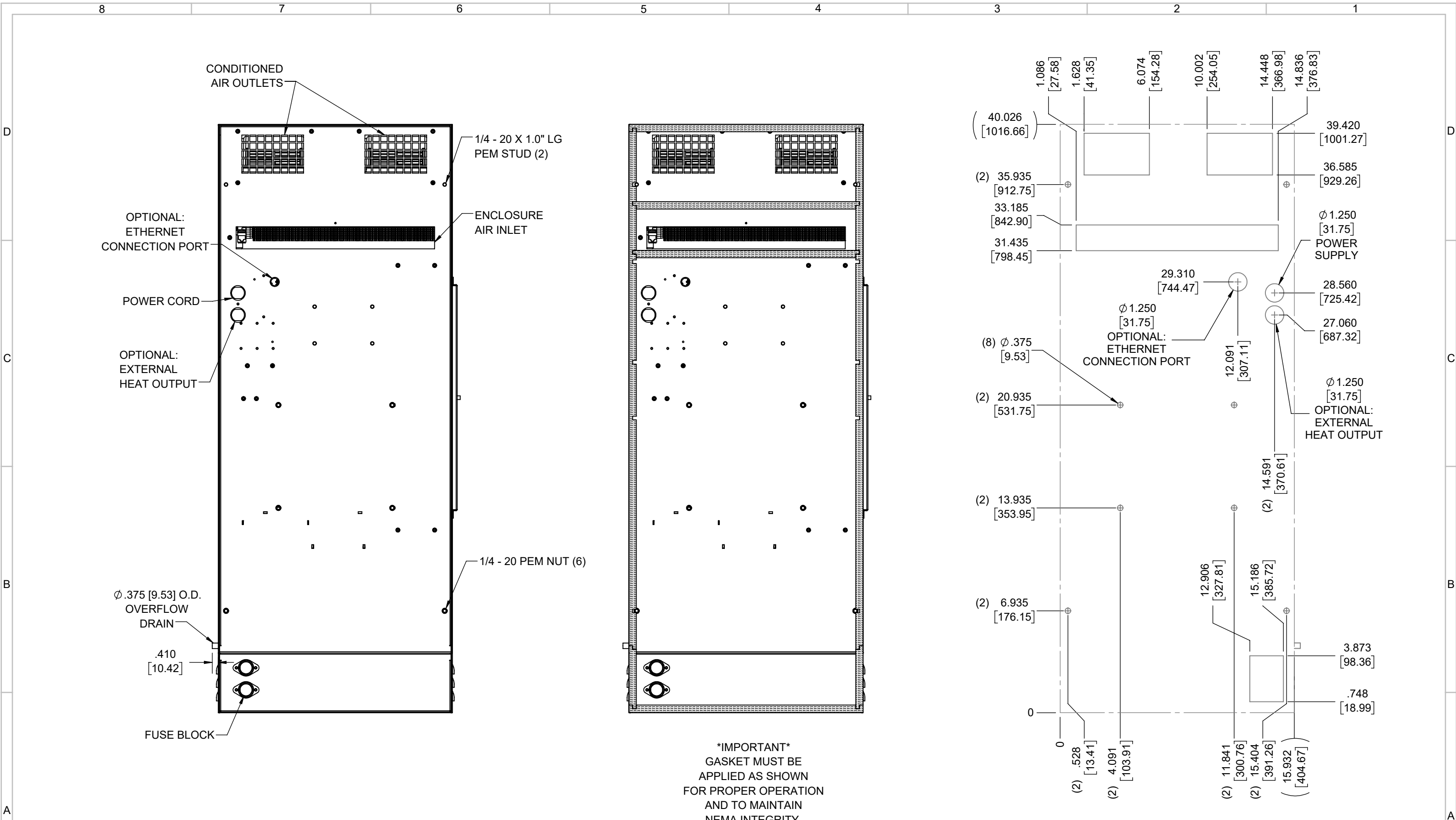
IQ5000V16
 COOLING CAPACITY: 5000 BTUH (1466W) @131°F (55°C)
 MAXIMUM AMPS: 2.4 (1152W) @480V/60HZ
 MAXIMUM OPERATING TEMP: 131°F (55°C)
 MINIMUM OPERATING TEMP: -40°F (-40°C)
 DIMENSIONS: 40.10" (1017MM) H X 15.93" (405MM) W X 7.34" (186MM) D
 WEIGHT: 105 LBS (47.7KG)

REV	REVISION	CHG	DATE	APP	DATE	CN #
C	ADDED CFM, dBA, AND CLEARANCE INFO	RCC	3/22/2018			1351
B	ADDED WATTAGE INFO	RCC	12/15/2017			
A	REDRAWN IN SW	RCC	4/4/2017			

ITEM NUMBER N/A	USED ON IQ5000V16
MATERIAL N/A	
EST WT: lbs	
DRAWN BY RCC	DATE 4/4/2017
	SCALE 1:8

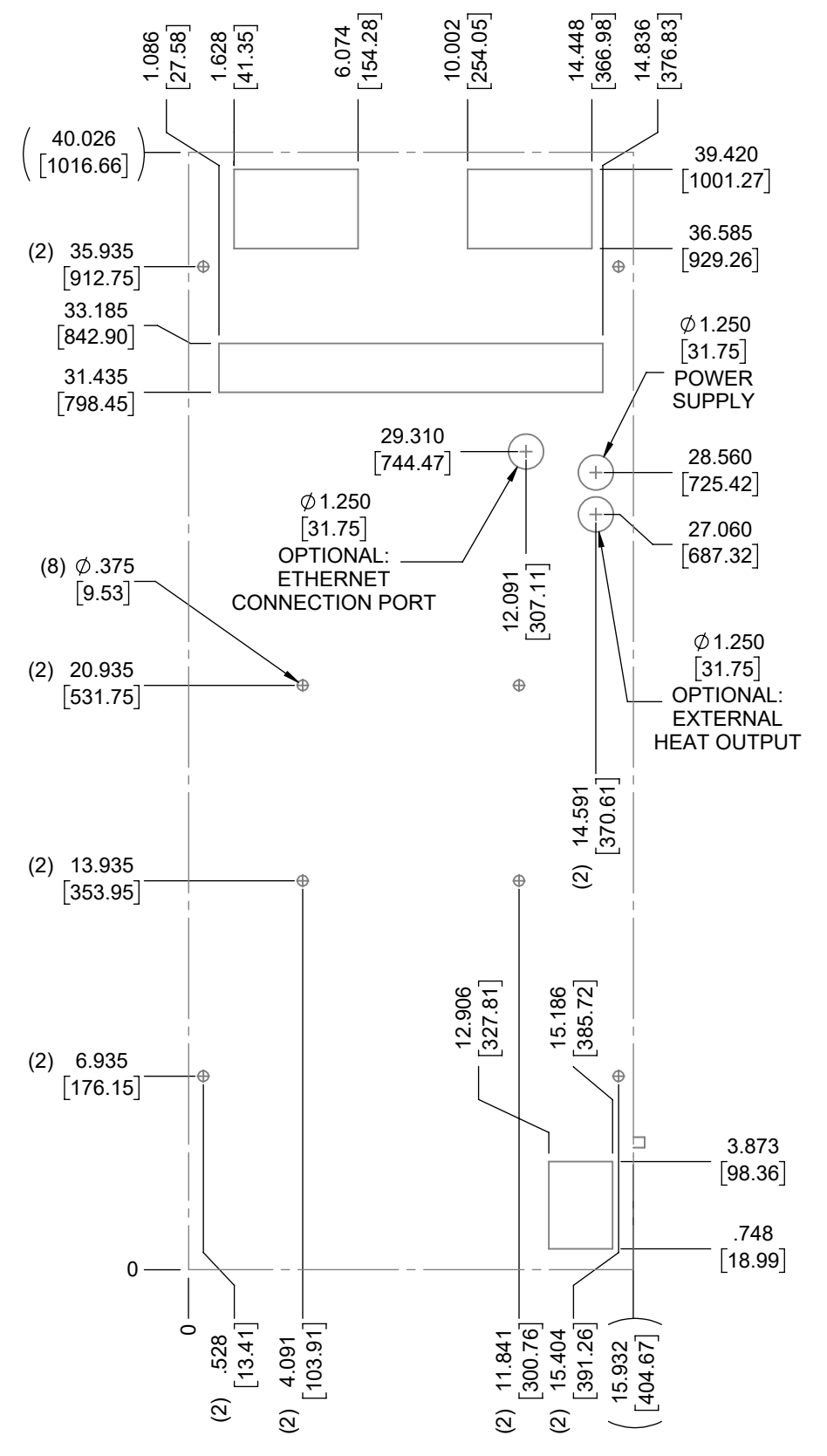
UNLESS OTHERWISE SPECIFIED TOLERANCES	
.X	±.060
.XX	±.030
.XXX	±.015
FRACTIONAL	±1/16
ANGULAR	±1/2°
SURFACE FINISH $\sqrt{63}$	
DO NOT SCALE DRAWING DIMENSIONS ARE INCHES	

ICE QUBE, INC.
THIS IS A PROPRIETARY DOCUMENT. DO NOT REPRODUCE OR DISCLOSE WITHOUT THE EXPRESS WRITTEN PERMISSION OF ICE QUBE, INC.
 DESCRIPTION
IQ5000V16 SPEC DRAWING, 480V
 DRAWING NUMBER
IQ300402



EVAP. OUTLET ≈ 236 CFM
 COND. OUTLET ≈ 410 CFM
 SOUND LEVEL @5FT FROM UNIT @ A HT. OF 3FT = 66 dBA
 SOUND LEVEL @2FT FROM UNIT @ A HT. OF 5FT = 64 dBA
 CONDENSER INLET MIN. CLEARANCE 2.34"

IMPORTANT
 GASKET MUST BE
 APPLIED AS SHOWN
 FOR PROPER OPERATION
 AND TO MAINTAIN
 NEMA INTEGRITY.



ITEM NUMBER N/A	USED ON IQ5000V16	UNLESS OTHERWISE SPECIFIED TOLERANCES X ±.060 .XX ±.030 .XXX ±.015 FRACTIONAL ±1/4 ANGULAR ±1/2°	<p>THIS IS A PROPRIETARY DOCUMENT. DO NOT REPRODUCE OR DISCLOSE WITHOUT THE EXPRESS WRITTEN PERMISSION OF ICE QUBE, INC.</p>
MATERIAL N/A		DESCRIPTION IQ5000V16 SPEC DRAWING, 480V	
EST WT: lbs	DATE 4/4/2017	SCALE 1:6	DRAWING NUMBER IQ300402
DRAWN BY RCC			REV C