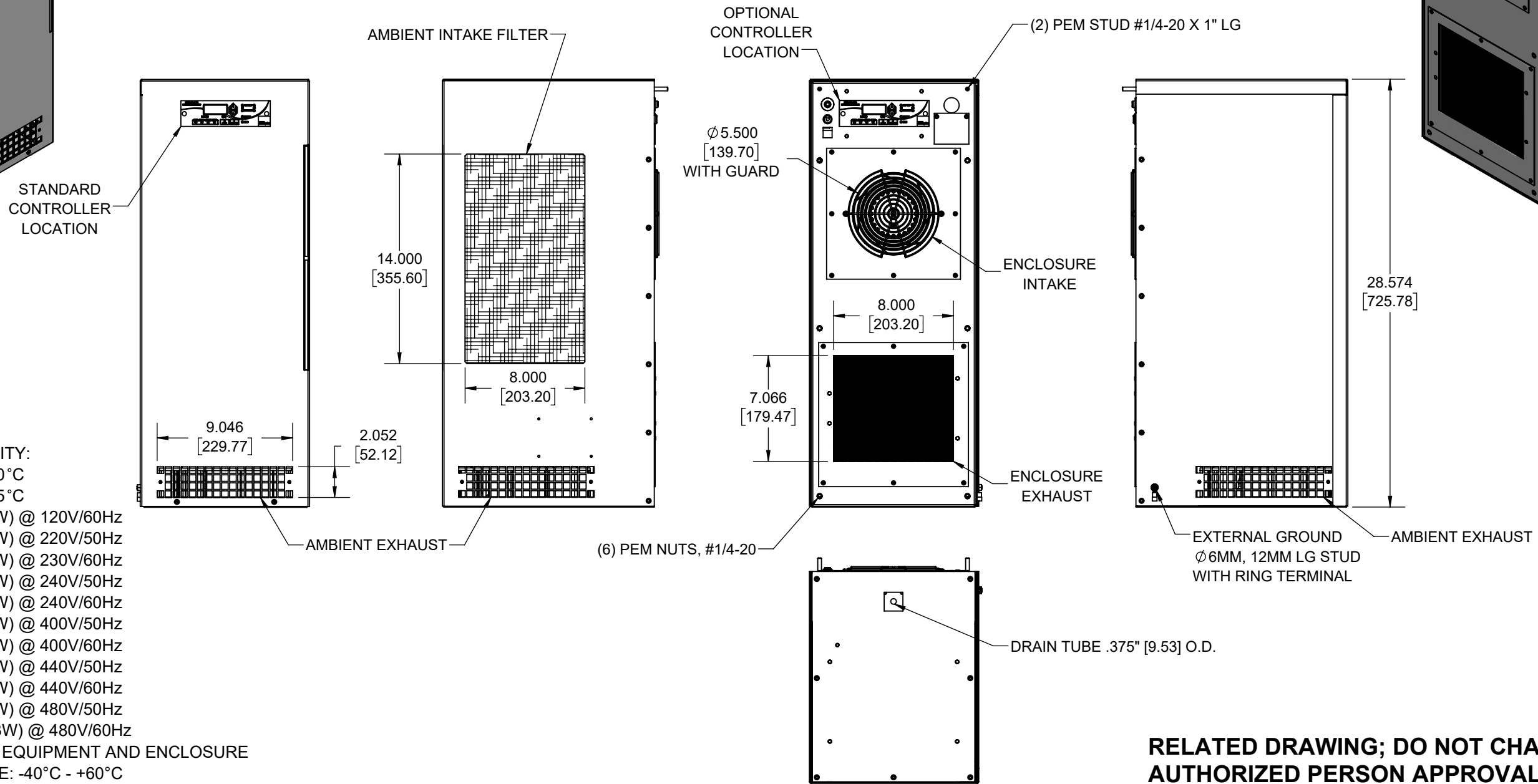
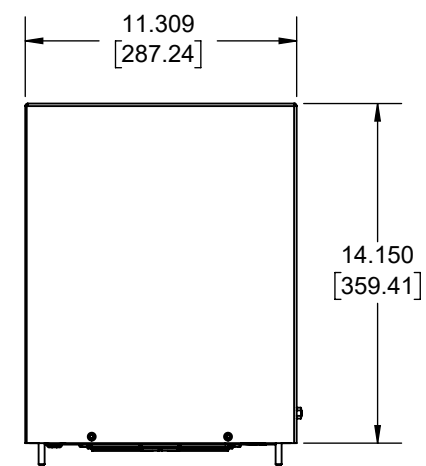
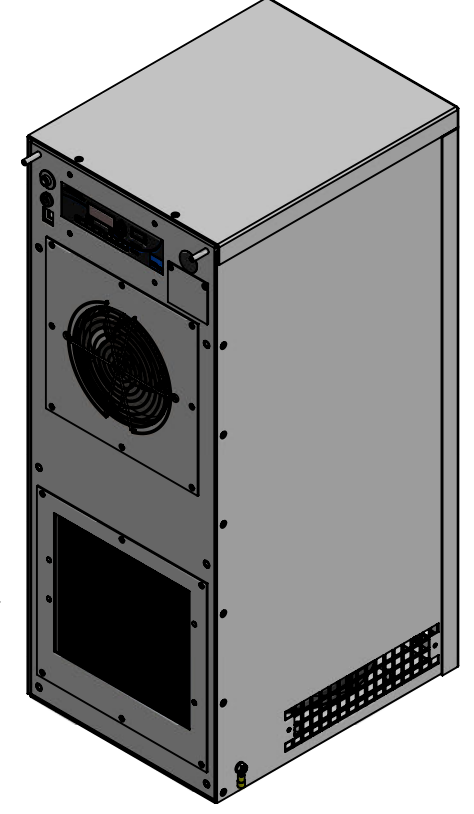


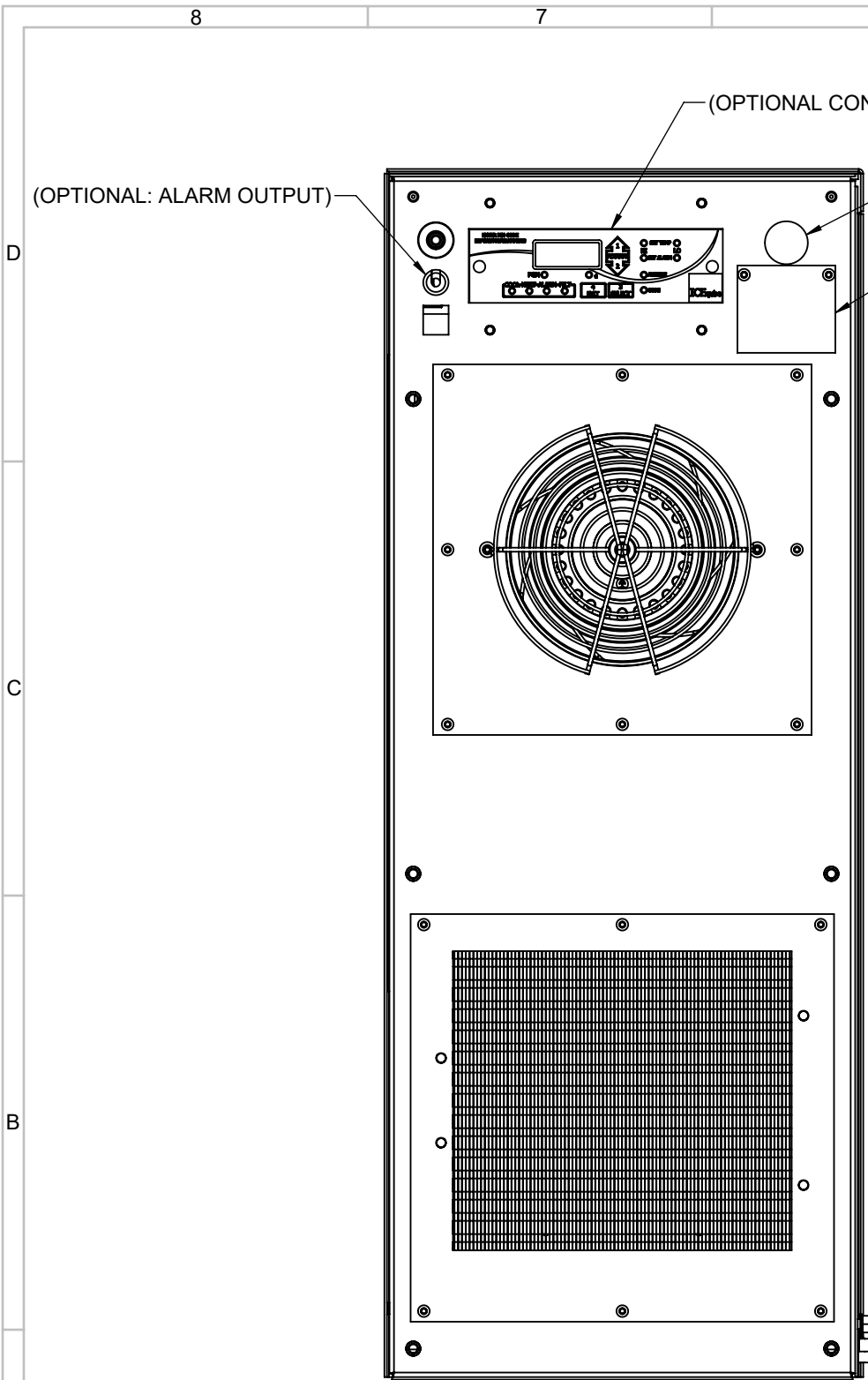
IQ5000EVZ2 CLASS I ZONE 2 AEx / Ex ZONE 2 ATEX / IECEx CERTIFIED



IQ5000EVZ2
 AEx ec IIC T₁ Gc
 Ex ec IIC T₁ Gc
 II 3G Ex ec IIC T₁ Gc
 NOMINAL COOLING CAPACITY:
 5600 BTUH (1641W) @ 60-60°C
 5300 BTUH (1553W) @ 35-35°C
 MAXIMUM AMPS: 8.29 (995W) @ 120V/60Hz
 MAXIMUM AMPS: 3.73 (821W) @ 220V/50Hz
 MAXIMUM AMPS: 4.31 (991W) @ 230V/60Hz
 MAXIMUM AMPS: 3.50 (841W) @ 240V/50Hz
 MAXIMUM AMPS: 4.13 (992W) @ 240V/60Hz
 MAXIMUM AMPS: 2.29 (916W) @ 400V/50Hz
 MAXIMUM AMPS: 2.49 (996W) @ 400V/60Hz
 MAXIMUM AMPS: 2.03 (891W) @ 440V/50Hz
 MAXIMUM AMPS: 2.25 (988W) @ 440V/60Hz
 MAXIMUM AMPS: 2.00 (960W) @ 480V/50Hz
 MAXIMUM AMPS: 2.09 (1003W) @ 480V/60Hz
 MAINTAINS IP66 BETWEEN EQUIPMENT AND ENCLOSURE
 OPERATING TEMPERATURE: -40°C - +60°C
 T CODE: W/O CRANKCASE HEATER- T4
 T CODE: W/ CRANKCASE HEATER- T3
 DIMENSIONS: 28.584" (726MM) H x 11.309" (287MM) W x 14.150" (359MM) D
 WEIGHT: 97.5 LBS (44.2KG) @ 120/220/230/240V
 WEIGHT: 117.5 LBS (53.3KG) @ 400/440/480V
 REFRIGERANT CHARGE: R134-A 24OZ (680G)

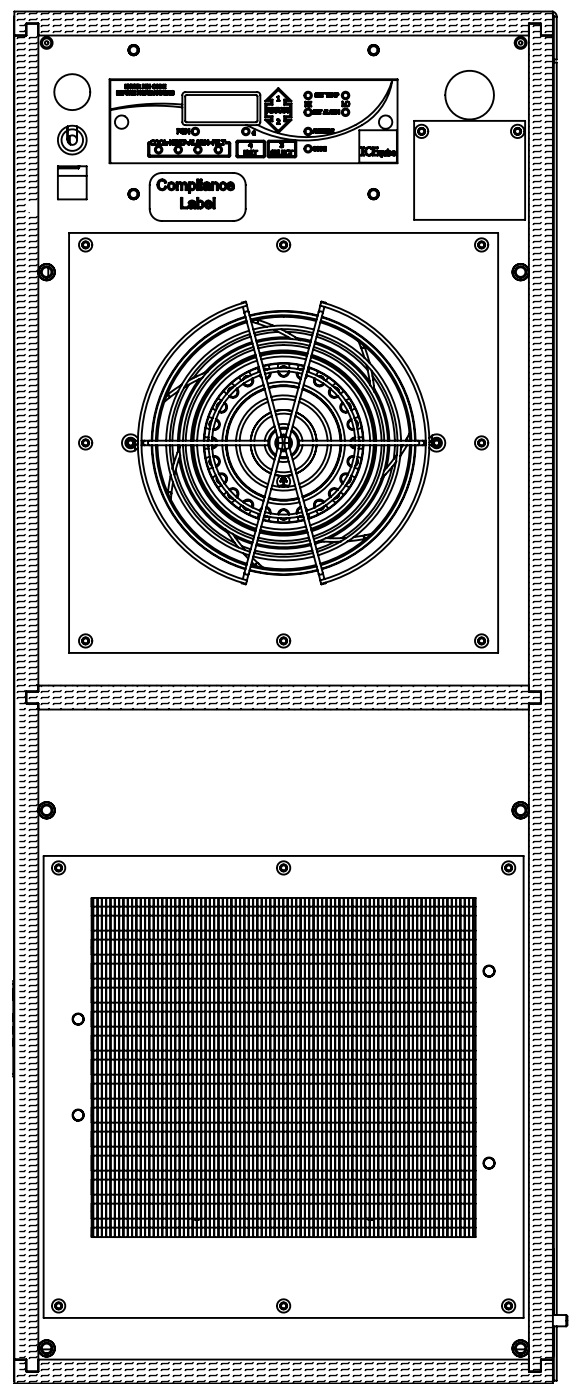
**RELATED DRAWING; DO NOT CHANGE WITHOUT
AUTHORIZED PERSON APPROVAL.**

ITEM NUMBER <i>N/A</i>		USED ON <i>IQ5000EVZ2</i>		UNLESS OTHERWISE SPECIFIED TOLERANCES		THIS IS A PROPRIETARY DOCUMENT. DO NOT REPRODUCE OR DISCLOSE WITHOUT THE EXPRESS WRITTEN PERMISSION OF ICE QUBE, INC. DESCRIPTION IQ5000EVZ2 ZONE 2 ATEX IECEx SPEC DRAWING DRAWING NUMBER IQ351246	
MATERIAL <i>N/A</i>				.X ±.060 .XX ±.030 .XXX ±.015 FRACTIONAL ±1/16 ANGULAR ±1/2° SURFACE FINISH 63			
EST WT: lbs		DRAWN BY <i>JGG</i>		DATE <i>12-5-12</i>		SCALE <i>1:8</i>	
REV		CHG		DATE		APP	
D		NAT		4/26/2021		21-0186	
C		RCC		4/26/2018		1347	
B		ART		1/10/2018		1336	
REV		CHG		DATE		APP	

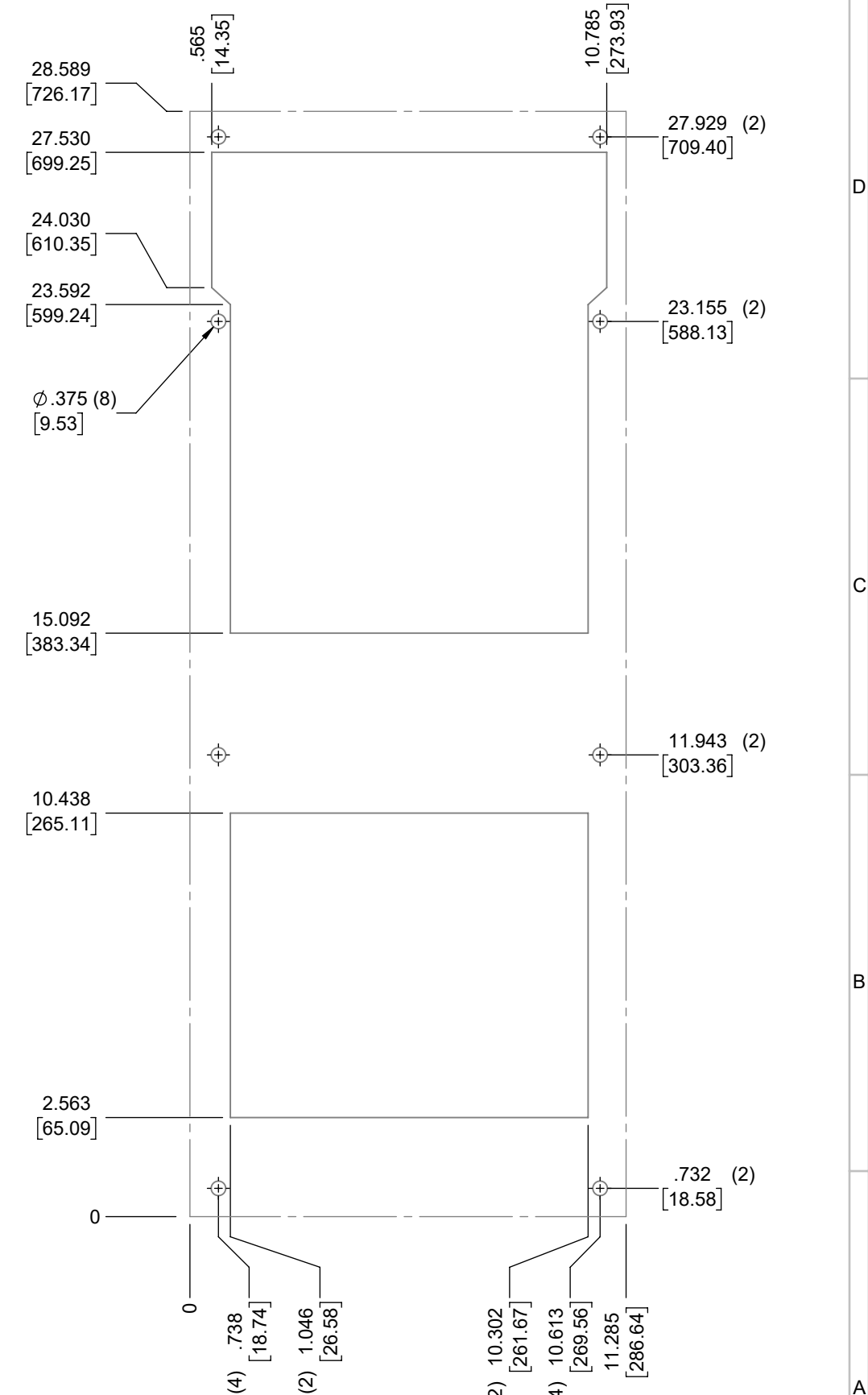


(OPTIONAL CONTROLLER LOCATION)
 AC POWER INPUT
 TERMINAL COVER

(OPTIONAL: ALARM OUTPUT)



IMPORTANT
GASKET MUST BE APPLIED AS SHOWN FOR PROPER OPERATION AND TO MAINTAIN ENCLOSURE INTEGRITY



EVAP. OUTLET ≈ 360 CFM
 COND. OUTLET ≈ 510 CFM
 SOUND LEVEL @5FT FROM UNIT @ A HT. OF 3FT = 62 dBA
 SOUND LEVEL @2FT FROM UNIT @ A HT. OF 5FT = 65 dBA
 CONDENSER INLET MIN. CLEARANCE 2.54"

ITEM NUMBER N/A	USED ON IQ5000EVZ2	UNLESS OTHERWISE SPECIFIED TOLERANCES X ±.060 .XX ±.030 .XXX ±.015 FRACTIONAL ±1/4 ANGULAR ±1/2°	ICE QUBE, INC. <small>THIS IS A PROPRIETARY DOCUMENT. DO NOT REPRODUCE OR DISCLOSE WITHOUT THE EXPRESS WRITTEN PERMISSION OF ICE QUBE, INC.</small> DESCRIPTION IQ5000EVZ2 ZONE 2 ATEX IECEx SPEC DRAWING DRAWING NUMBER IQ351246
MATERIAL N/A		SURFACE FINISH 63	
EST. WT.: lbs		DO NOT SCALE DRAWING DIMENSIONS ARE INCHES	REV D
DRAWN BY JGG	DATE 12-5-12	SCALE 1:4	