

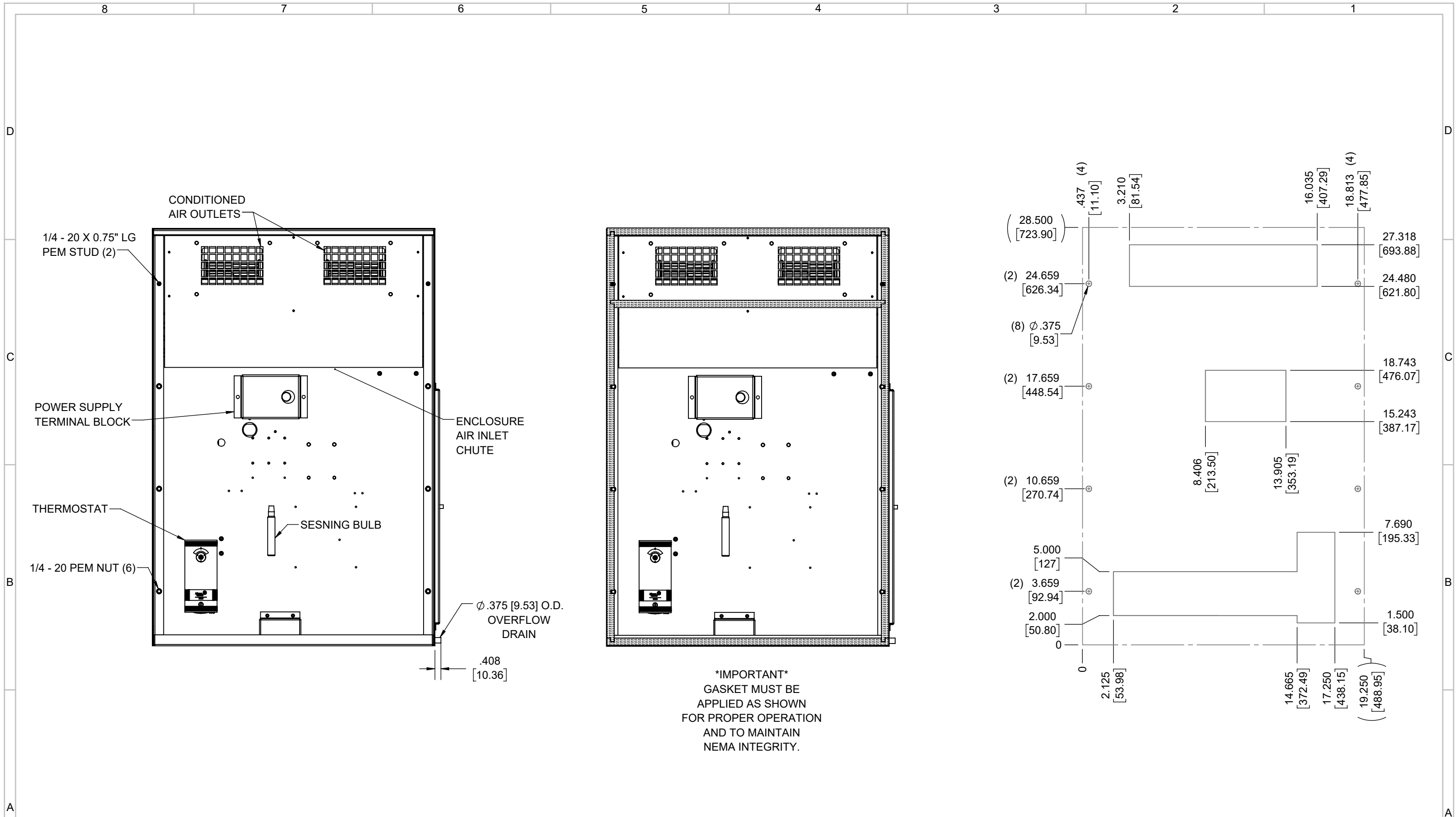
IQ4500V
 COOLING CAPACITY: 4500 BTUH (1320W) @131°F (55°C)
 MAXIMUM AMPS: 10.2 (1224W) @120V/60HZ
 MAXIMUM AMPS: 5.1/5.7 (1173/1254W) @230/220V 60/50HZ
 MAXIMUM OPERATING TEMP: 131°F (55°C)
 MINIMUM OPERATING TEMP: -4°F (-20°C)
 DIMENSIONS: 28.50" (724MM) H X 19.31" (490MM) W X 6.41" (163MM) D
 WEIGHT: 104 LBS (47.3KG)

REV	REVISION	CHG	DATE	APP	DATE	CN #
D	CHANGED THERMOSTAT DIMENSIONS	NAT	2/15/2021			ECN-1434
C	ADDED CFM, dBA, AND CLEARANCE INFO	RCC	3/29/2018			1351
B	ADDED WATTAGE INFO	RCC	1/3/2018			
A	REDRAWN IN SW	RCC	4/13/2017			

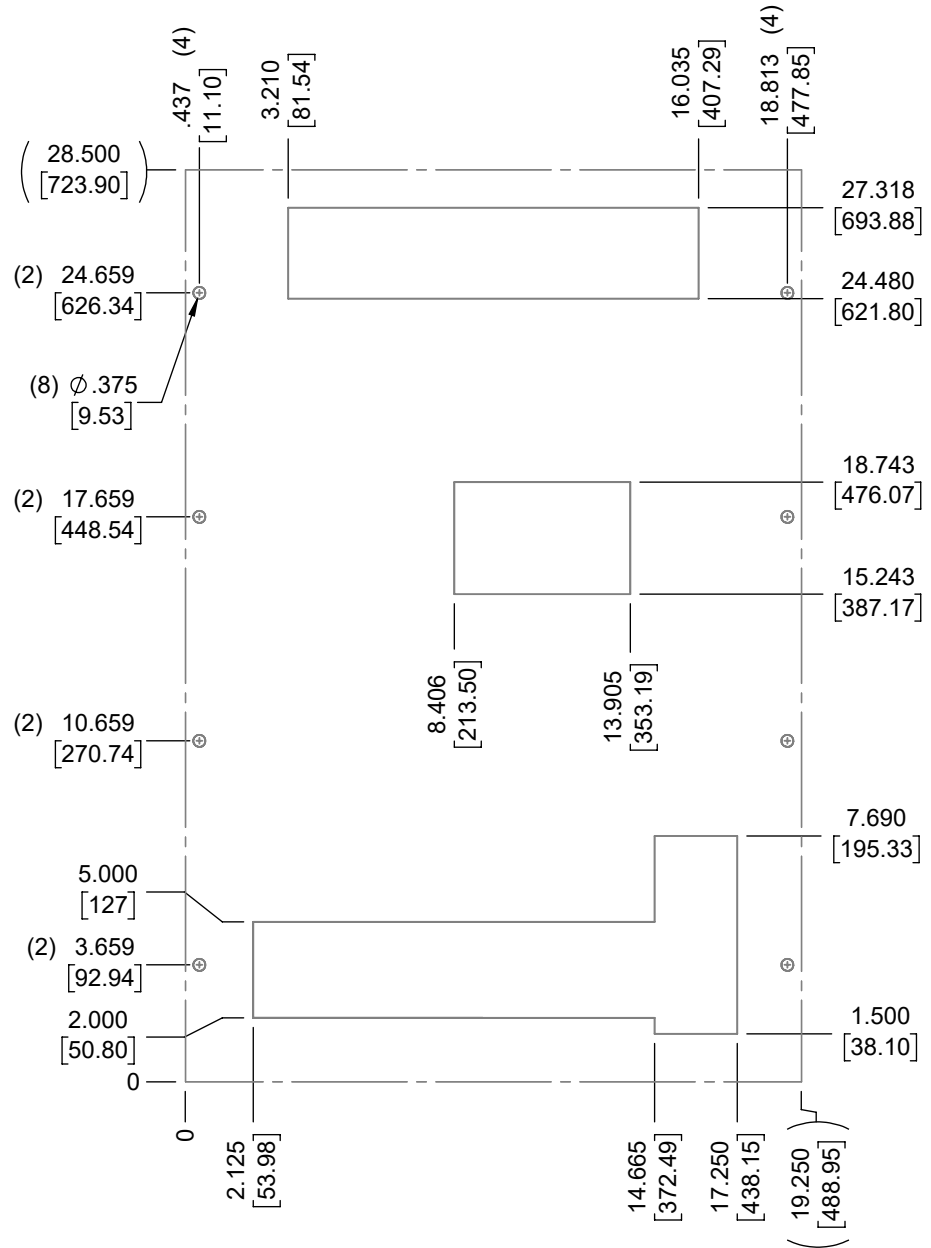
ITEM NUMBER	N/A	USED ON	IQ4500V
MATERIAL	N/A		
EST WT:	lbs		
DRAWN BY	RCC	DATE	4/13/2017
		SCALE	1:7

UNLESS OTHERWISE SPECIFIED TOLERANCES
 .X ±.060
 .XX ±.030
 .XXX ±.015
 FRACTIONAL ±1/16
 ANGULAR ±1/2°
 SURFACE FINISH 63

ICE QUBE, INC.
THIS IS A PROPRIETARY DOCUMENT. DO NOT REPRODUCE OR DISCLOSE WITHOUT THE EXPRESS WRITTEN PERMISSION OF ICE QUBE, INC.
 DESCRIPTION
IQ4500V SPEC DRAWING XP2
 DRAWING NUMBER
IQ351430
 REV
D



IMPORTANT
 GASKET MUST BE
 APPLIED AS SHOWN
 FOR PROPER OPERATION
 AND TO MAINTAIN
 NEMA INTEGRITY.



EVAP. OUTLET ≈ 236 CFM
 COND. OUTLET ≈ 236 CFM
 SOUND LEVEL @5FT FROM UNIT @ A HT. OF 3FT = 55 dBA
 SOUND LEVEL @2FT FROM UNIT @ A HT. OF 5FT = 55 dBA
 CONDENSER INLET MIN. CLEARANCE 2.04"

ITEM NUMBER N/A	USED ON IQ4500V	UNLESS OTHERWISE SPECIFIED TOLERANCES X ±.060 .XX ±.030 .XXX ±.015 FRACTIONAL ±1/4 ANGULAR ±1/2°	<p>THIS IS A PROPRIETARY DOCUMENT. DO NOT REPRODUCE OR DISCLOSE WITHOUT THE EXPRESS WRITTEN PERMISSION OF ICE QUBE, INC.</p>
MATERIAL N/A		<p>EST WT: lbs</p> <p>DRAWN BY: RCC</p> <p>DATE: 4/13/2017</p> <p>SCALE: 1:6</p> <p>DO NOT SCALE DRAWING DIMENSIONS ARE INCHES</p>	
<p>DESCRIPTION IQ4500V SPEC DRAWING XP2</p>			<p>DRAWING NUMBER IQ351430</p> <p>REV D</p>