

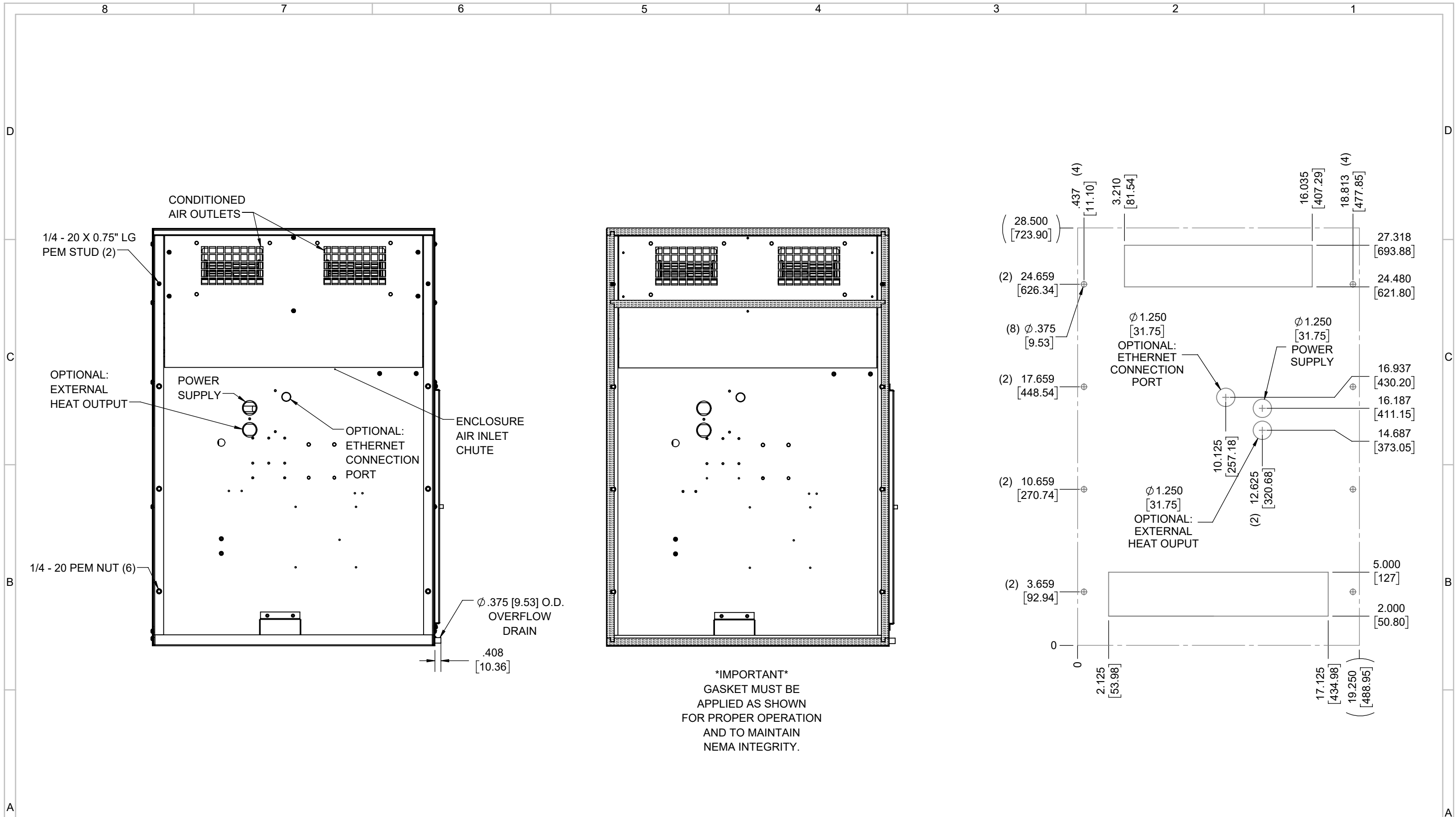
IQ4500V
 COOLING CAPACITY: 4500 BTUH (1320W) @131°F (55°C)
 MAXIMUM AMPS: 10.2 (1224W) @120V/60HZ
 MAXIMUM AMPS: 5.1/5.7 (1173/1254W) @230/220V 60/50HZ
 MAXIMUM OPERATING TEMP: 131°F (55°C)
 MINIMUM OPERATING TEMP: -40°F (-40°C)
 DIMENSIONS: 28.50" (724MM) H X 19.31" (490MM) W X 6.41" (163MM) D
 WEIGHT: 81 LBS (36.8KG)

REV	CHG	DATE	APP	DATE	CN #
C		3/29/2018			1351
B		1/3/2018			
A		4/13/2017			

ITEM NUMBER	N/A	USED ON	IQ4500V
MATERIAL	N/A		
EST WT:	lbs		
DRAWN BY	RCC	DATE	4/13/2017
		SCALE	1:7

UNLESS OTHERWISE SPECIFIED TOLERANCES	
.X	±.060
.XX	±.030
.XXX	±.015
FRACTIONAL	±1/16
ANGULAR	±1/2°
SURFACE FINISH 63	
DO NOT SCALE DRAWING DIMENSIONS ARE INCHES	

ICE QUBE, INC.
 THIS IS A PROPRIETARY DOCUMENT. DO NOT REPRODUCE OR DISCLOSE WITHOUT THE EXPRESS WRITTEN PERMISSION OF ICE QUBE, INC.
 DESCRIPTION
IQ4500V SPEC DRAWING
 DRAWING NUMBER
IQ351428
 REV
C



EVAP. OUTLET \approx 236 CFM
 COND. OUTLET \approx 236 CFM
 SOUND LEVEL @5FT FROM UNIT @ A HT. OF 3FT = 55 dBA
 SOUND LEVEL @2FT FROM UNIT @ A HT. OF 5FT = 55 dBA
 CONDENSER INLET MIN. CLEARANCE 2.04"

ITEM NUMBER N/A	USED ON IQ4500V	UNLESS OTHERWISE SPECIFIED TOLERANCES X \pm .060 .XX \pm .030 .XXX \pm .015 FRACTIONAL \pm 1/4 ANGULAR \pm 1/2°	<p>ICE QUBE, INC. <small>THIS IS A PROPRIETARY DOCUMENT. DO NOT REPRODUCE OR DISCLOSE WITHOUT THE EXPRESS WRITTEN PERMISSION OF ICE QUBE, INC.</small></p>
MATERIAL N/A		DESCRIPTION IQ4500V SPEC DRAWING	
EST WT: lbs		SURFACE FINISH 63	DRAWING NUMBER IQ351428
DRAWN BY RCC	DATE 4/13/2017	SCALE 1:6	REV C