

IQ4500V  
 COOLING CAPACITY: 4500 BTUH (1320W) @131°F (55°C)  
 MAXIMUM AMPS: 2.3 (1104W) @480V/60HZ  
 MAXIMUM OPERATING TEMP: 131°F (55°C)  
 MINIMUM OPERATING TEMP: -40°F (-40°C)  
 DIMENSIONS: 32.50" (826MM) H X 19.31" (490MM) W X 6.41" (163MM) D  
 WEIGHT: 96 LBS (43.6KG)

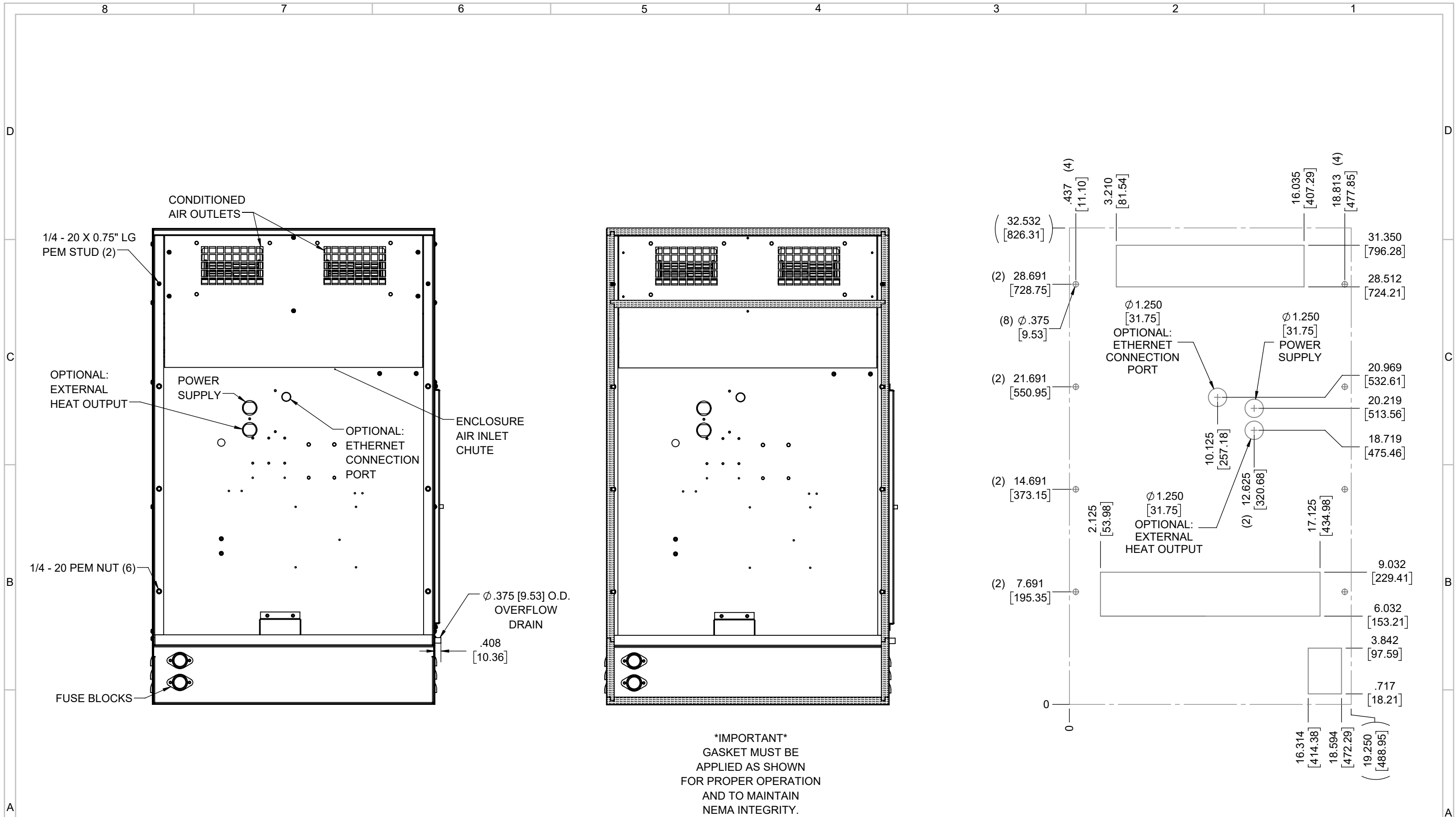
REV	CHG	DATE	APP	DATE	CN #
C		3/29/2018			1351
B		1/3/2018			
A		4/13/2017			

ITEM NUMBER	N/A
MATERIAL	N/A
EST WT:	lbs
DRAWN BY	RCC

USED ON	IQ4500V
DATE	4/13/2017
SCALE	1:7

UNLESS OTHERWISE SPECIFIED TOLERANCES	
.X	±.060
.XX	±.030
.XXX	±.015
FRACTIONAL	±1/16
ANGULAR	±1/2°
SURFACE FINISH 63	
DO NOT SCALE DRAWING DIMENSIONS ARE INCHES	

**ICE QUBE, INC.**  
THIS IS A PROPRIETARY DOCUMENT. DO NOT REPRODUCE OR DISCLOSE WITHOUT THE EXPRESS WRITTEN PERMISSION OF ICE QUBE, INC.  
 DESCRIPTION  
**IQ4500V SPEC DRAWING, 480V**  
 DRAWING NUMBER  
**IQ351429**



**\*IMPORTANT\***  
 GASKET MUST BE  
 APPLIED AS SHOWN  
 FOR PROPER OPERATION  
 AND TO MAINTAIN  
 NEMA INTEGRITY.

EVAP. OUTLET ≈ 236 CFM  
 COND. OUTLET ≈ 236 CFM  
 SOUND LEVEL @5FT FROM UNIT @ A HT. OF 3FT = 55 dBA  
 SOUND LEVEL @2FT FROM UNIT @ A HT. OF 5FT = 55 dBA  
 CONDENSER INLET MIN. CLEARANCE 2.04"

ITEM NUMBER <i>N/A</i>	USED ON <i>IQ4500V</i>	UNLESS OTHERWISE SPECIFIED TOLERANCES X ±.060 .XX ±.030 .XXX ±.015 FRACTIONAL ±1/4 ANGULAR ±1/2°	 <small>THIS IS A PROPRIETARY DOCUMENT. DO NOT REPRODUCE OR DISCLOSE WITHOUT THE EXPRESS WRITTEN PERMISSION OF ICE QUBE, INC.</small>
MATERIAL <i>N/A</i>		DESCRIPTION <i>IQ4500V SPEC DRAWING, 480V</i>	
EST WT: lbs	DRAWN BY <i>RCC</i>	DATE <i>4/13/2017</i>	DRAWING NUMBER <b><i>IQ351429</i></b>
		SCALE <i>1:6</i>	REV <b><i>C</i></b>
DO NOT SCALE DRAWING DIMENSIONS ARE INCHES			