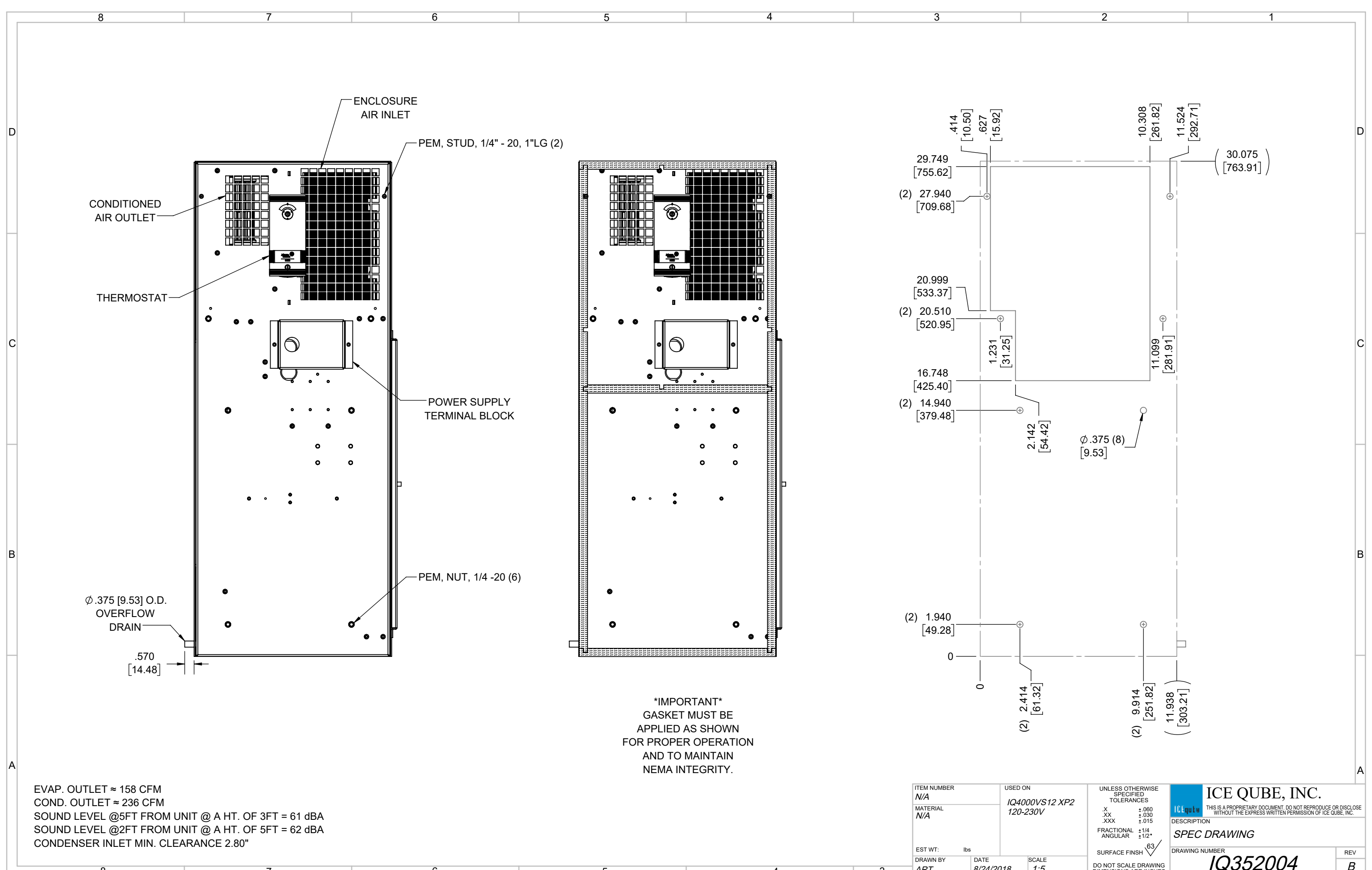


IQ4000VS12
 COOLING CAPACITY: 4000 BTUH (1173W) @131°F (55°C)
 MAXIMUM AMPS: 8.7 (1044W) @120V/60HZ
 MAXIMUM AMPS: 4.5/5.0 (1035/1100W) @230/220 60/50HZ
 MAXIMUM OPERATING TEMP: 131°F (55°C)
 MINIMUM OPERATING TEMP: -40°F (-40°C)
 DIMENSIONS: 30.08" (764MM) H X 11.99" (305MM) W X 8.34" (212MM) D
 WEIGHT: 80 LBS (36.4KG)

ITEM NUMBER	N/A	
MATERIAL	N/A	
EST WT:	lbs	
DRAWN BY	DATE	SCALE
ART	8/24/2018	1:6
REV	CHG	DATE

USED ON	IQ4000VS12 XP2 120-230V	
UNLESS OTHERWISE SPECIFIED TOLERANCES	X ±.060 .XX ±.030 .XXX ±.015 FRACTIONAL ±1/16 ANGULAR ±1/2° SURFACE FINISH 63	
DO NOT SCALE DRAWING DIMENSIONS ARE INCHES		

ICE QUBE, INC.
THIS IS A PROPRIETARY DOCUMENT. DO NOT REPRODUCE OR DISCLOSE WITHOUT THE EXPRESS WRITTEN PERMISSION OF ICE QUBE, INC.
 DESCRIPTION
SPEC DRAWING
 DRAWING NUMBER
IQ352004
 REV
B



ENCLOSURE AIR INLET

PEM, STUD, 1/4" - 20, 1"LG (2)

CONDITIONED AIR OUTLET

THERMOSTAT

POWER SUPPLY TERMINAL BLOCK

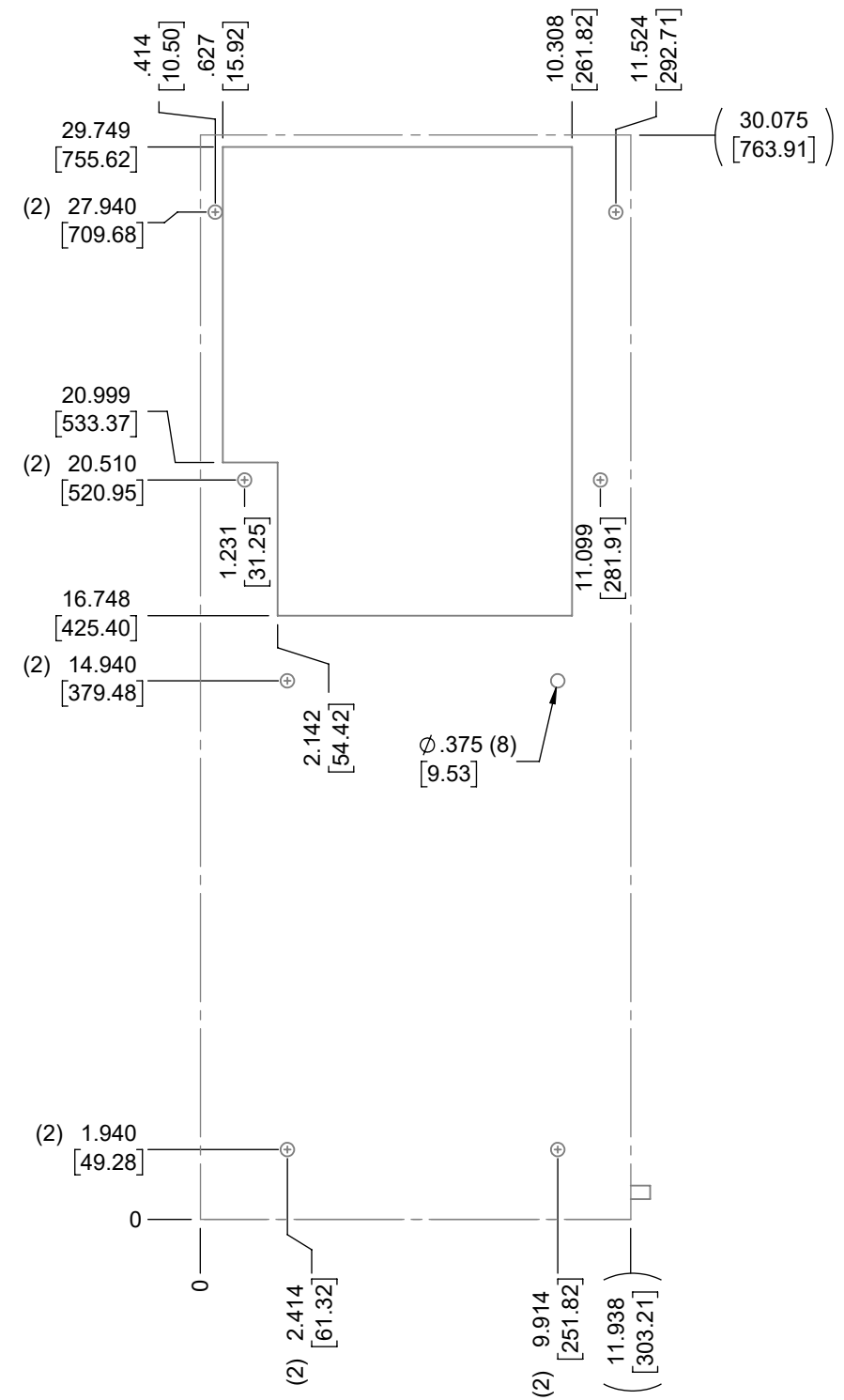
PEM, NUT, 1/4 -20 (6)

Ø .375 [9.53] O.D. OVERFLOW DRAIN

.570 [14.48]

IMPORTANT
 GASKET MUST BE APPLIED AS SHOWN FOR PROPER OPERATION AND TO MAINTAIN NEMA INTEGRITY.

EVAP. OUTLET ≈ 158 CFM
 COND. OUTLET ≈ 236 CFM
 SOUND LEVEL @5FT FROM UNIT @ A HT. OF 3FT = 61 dBA
 SOUND LEVEL @2FT FROM UNIT @ A HT. OF 5FT = 62 dBA
 CONDENSER INLET MIN. CLEARANCE 2.80"



ITEM NUMBER N/A	USED ON IQ4000VS12 XP2 120-230V	UNLESS OTHERWISE SPECIFIED TOLERANCES X ±.060 .XX ±.030 .XXX ±.015 FRACTIONAL ±1/4 ANGULAR ±1/2° SURFACE FINISH 63	<p>THIS IS A PROPRIETARY DOCUMENT. DO NOT REPRODUCE OR DISCLOSE WITHOUT THE EXPRESS WRITTEN PERMISSION OF ICE QUBE, INC.</p>
MATERIAL N/A		DO NOT SCALE DRAWING DIMENSIONS ARE INCHES	
EST WT: DRAWN BY ART	DATE 8/24/2018	SCALE 1:5	DESCRIPTION SPEC DRAWING DRAWING NUMBER IQ352004 REV B