

IQ3500V  
 COOLING CAPACITY: 3500 BTUH (1026W) @131°F (55°C)  
 MAXIMUM AMPS: 2.4 (1152W) @480V/60HZ  
 MAXIMUM OPERATING TEMP: 131°F (55°C)  
 MINIMUM OPERATING TEMP: -40°F (-40°C)  
 DIMENSIONS: 32.50" (826MM) H X 19.31" (490MM) W X 6.41" (163MM) D  
 WEIGHT: 96 LBS (43.6KG)

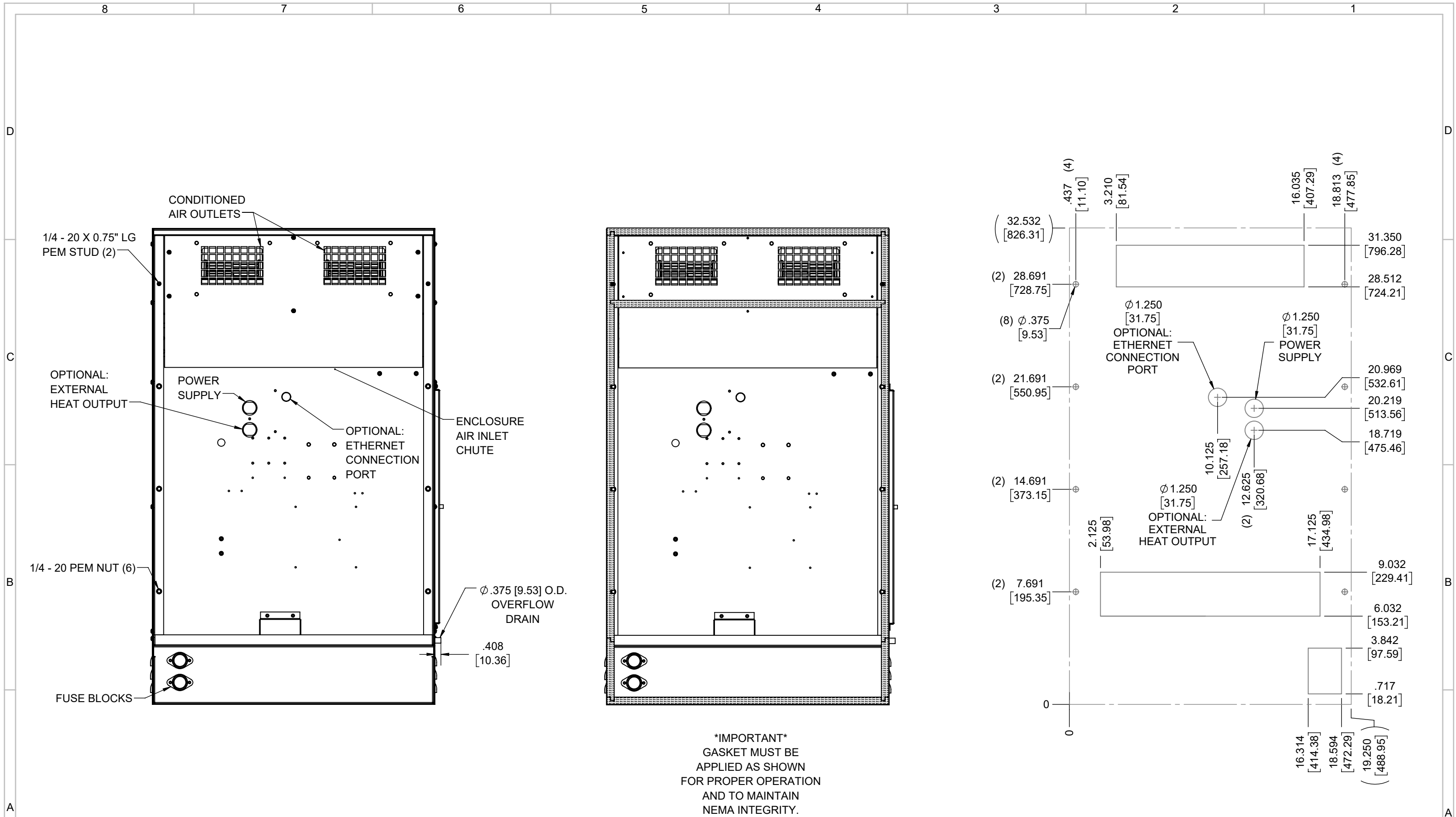
REV	CHG	DATE	APP	DATE	CN #
C		3/28/2018			1351
B		1/3/2018			
A		4/13/2017			

ITEM NUMBER	N/A
MATERIAL	N/A
EST WT:	lbs
DRAWN BY	RCC
DATE	4/13/2017

USED ON	IQ3500V
SCALE	1:7

UNLESS OTHERWISE SPECIFIED TOLERANCES	
.X	±.060
.XX	±.030
.XXX	±.015
FRACTIONAL	±1/16
ANGULAR	±1/2°
SURFACE FINISH	63
DO NOT SCALE DRAWING DIMENSIONS ARE INCHES	

**ICE QUBE, INC.**  
THIS IS A PROPRIETARY DOCUMENT. DO NOT REPRODUCE OR DISCLOSE WITHOUT THE EXPRESS WRITTEN PERMISSION OF ICE QUBE, INC.  
 DESCRIPTION  
**IQ3500V SPEC DRAWING, 480V**  
 DRAWING NUMBER  
**IQ351425**  
 REV  
**C**



EVAP. OUTLET  $\approx$  236 CFM  
 COND. OUTLET  $\approx$  236 CFM  
 SOUND LEVEL @5FT FROM UNIT @ A HT. OF 3FT = 55 dBA  
 SOUND LEVEL @2FT FROM UNIT @ A HT. OF 5FT = 55 dBA  
 CONDENSER INLET MIN. CLEARANCE 2.04"

ITEM NUMBER N/A	USED ON IQ3500V	UNLESS OTHERWISE SPECIFIED TOLERANCES X $\pm$ .060 .XX $\pm$ .030 .XXX $\pm$ .015 FRACTIONAL $\pm$ 1/4 ANGULAR $\pm$ 1/2°	<p>THIS IS A PROPRIETARY DOCUMENT. DO NOT REPRODUCE OR DISCLOSE WITHOUT THE EXPRESS WRITTEN PERMISSION OF ICE QUBE, INC.</p>
MATERIAL N/A		DESCRIPTION IQ3500V SPEC DRAWING, 480V	
EST WT: lbs	DRAWN BY RCC	DATE 4/13/2017	DRAWING NUMBER IQ351425
		SCALE 1:6	REV C