

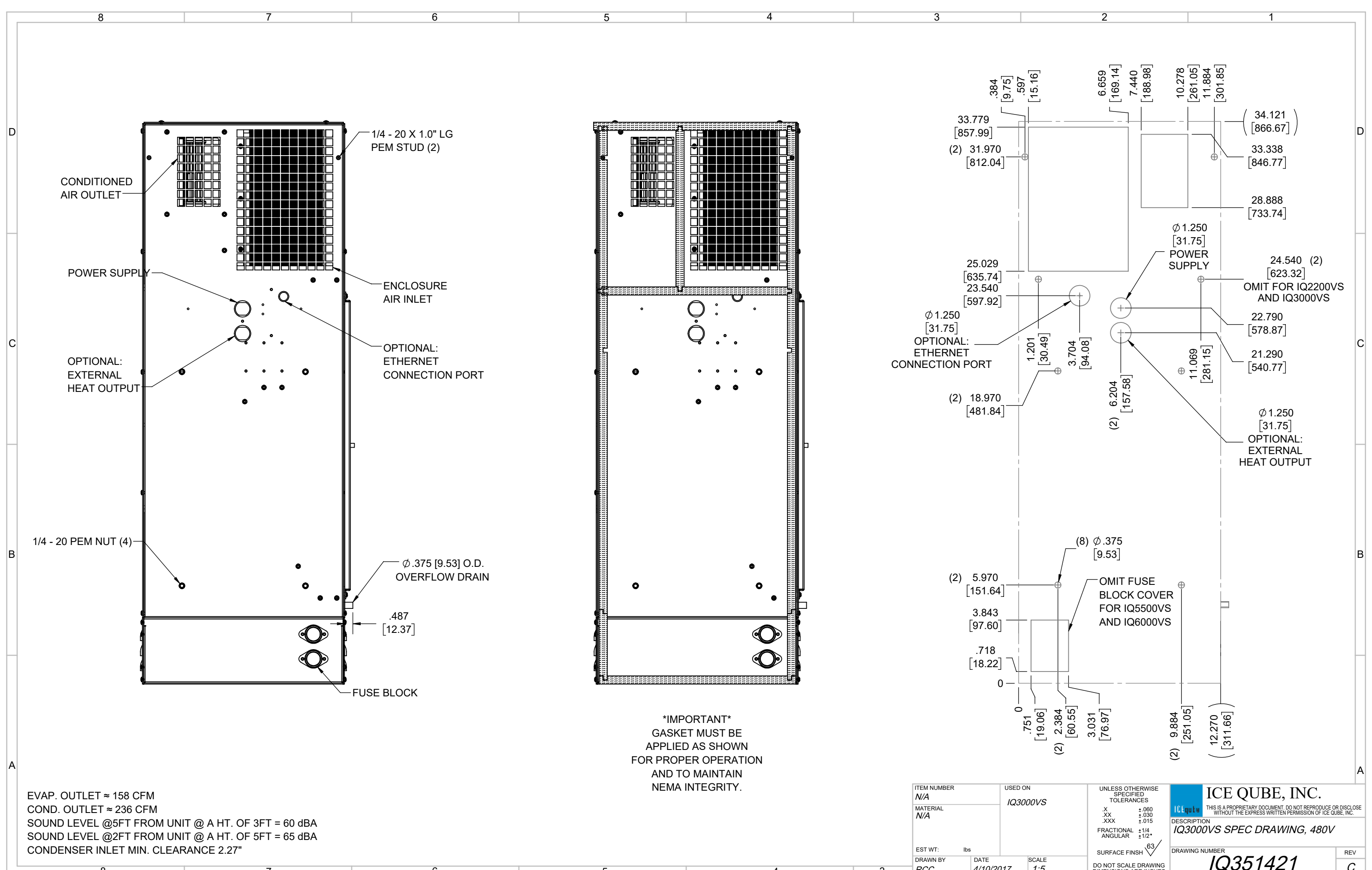
IQ3000VS
 COOLING CAPACITY: 3000 BTUH (880W) @131°F (55°C)
 MAXIMUM AMPS: 1.6 (768W) @480V/60HZ
 MAXIMUM OPERATING TEMP: 131°F (55°C)
 MINIMUM OPERATING TEMP: -40°F (-40°C)
 DIMENSIONS: 34.12" (867MM) H X 12.28" (312MM) W X 6.34" (161MM) D
 WEIGHT: 70 LBS (31.8KG)

REV	REVISION	CHG	DATE	APP	DATE	CN #
C	ADDED CFM, dBA, AND CLEARANCE INFO	RCC	3/28/2018			1351
B	ADDED WATTAGE INFO	RCC	1/2/2018			
A	REDRAWN IN SW	RCC	4/10/2017			

ITEM NUMBER	N/A	USED ON	IQ3000VS
MATERIAL	N/A		
EST WT:	lbs		
DRAWN BY	RCC	DATE	4/10/2017
		SCALE	1:7

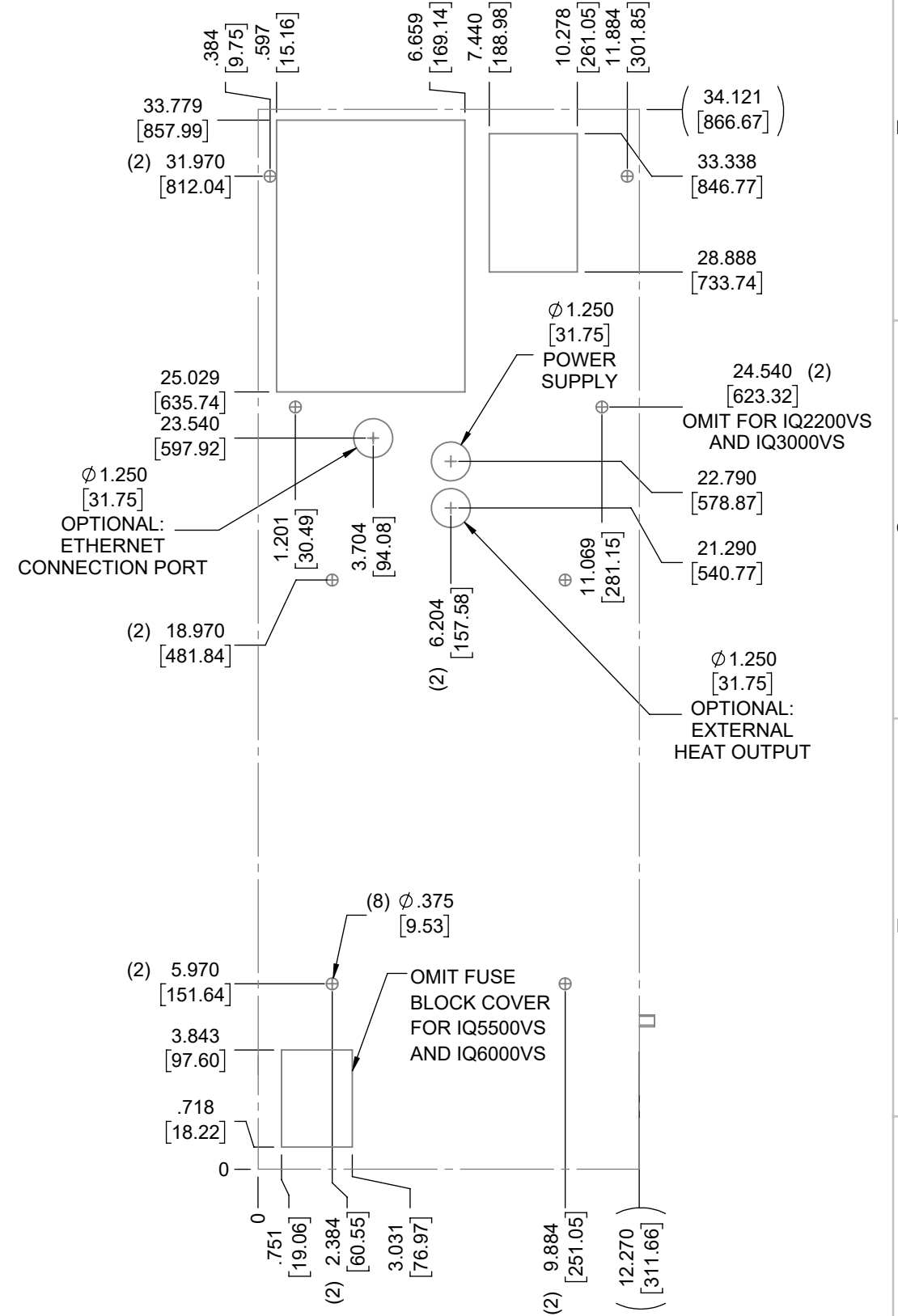
UNLESS OTHERWISE SPECIFIED TOLERANCES	
.X	±.060
.XX	±.030
.XXX	±.015
FRACTIONAL	±1/16
ANGULAR	±1/2°
SURFACE FINISH 63	
DO NOT SCALE DRAWING DIMENSIONS ARE INCHES	

ICE QUBE, INC.
THIS IS A PROPRIETARY DOCUMENT. DO NOT REPRODUCE OR DISCLOSE WITHOUT THE EXPRESS WRITTEN PERMISSION OF ICE QUBE, INC.
 DESCRIPTION
IQ3000VS SPEC DRAWING, 480V
 DRAWING NUMBER
IQ351421
 REV
C



EVAP. OUTLET ≈ 158 CFM
 COND. OUTLET ≈ 236 CFM
 SOUND LEVEL @5FT FROM UNIT @ A HT. OF 3FT = 60 dBA
 SOUND LEVEL @2FT FROM UNIT @ A HT. OF 5FT = 65 dBA
 CONDENSER INLET MIN. CLEARANCE 2.27"

IMPORTANT
 GASKET MUST BE
 APPLIED AS SHOWN
 FOR PROPER OPERATION
 AND TO MAINTAIN
 NEMA INTEGRITY.



ITEM NUMBER N/A	USED ON IQ3000VS	UNLESS OTHERWISE SPECIFIED TOLERANCES X ±.060 .XX ±.030 .XXX ±.015 FRACTIONAL ±1/4 ANGULAR ±1/2°	<p>ICE QUBE, INC. <small>THIS IS A PROPRIETARY DOCUMENT. DO NOT REPRODUCE OR DISCLOSE WITHOUT THE EXPRESS WRITTEN PERMISSION OF ICE QUBE, INC.</small></p>
MATERIAL N/A		DESCRIPTION IQ3000VS SPEC DRAWING, 480V	
EST. WT.: lbs	DRAWN BY RCC	DATE 4/10/2017	DRAWING NUMBER IQ351421
		SCALE 1:5	REV C