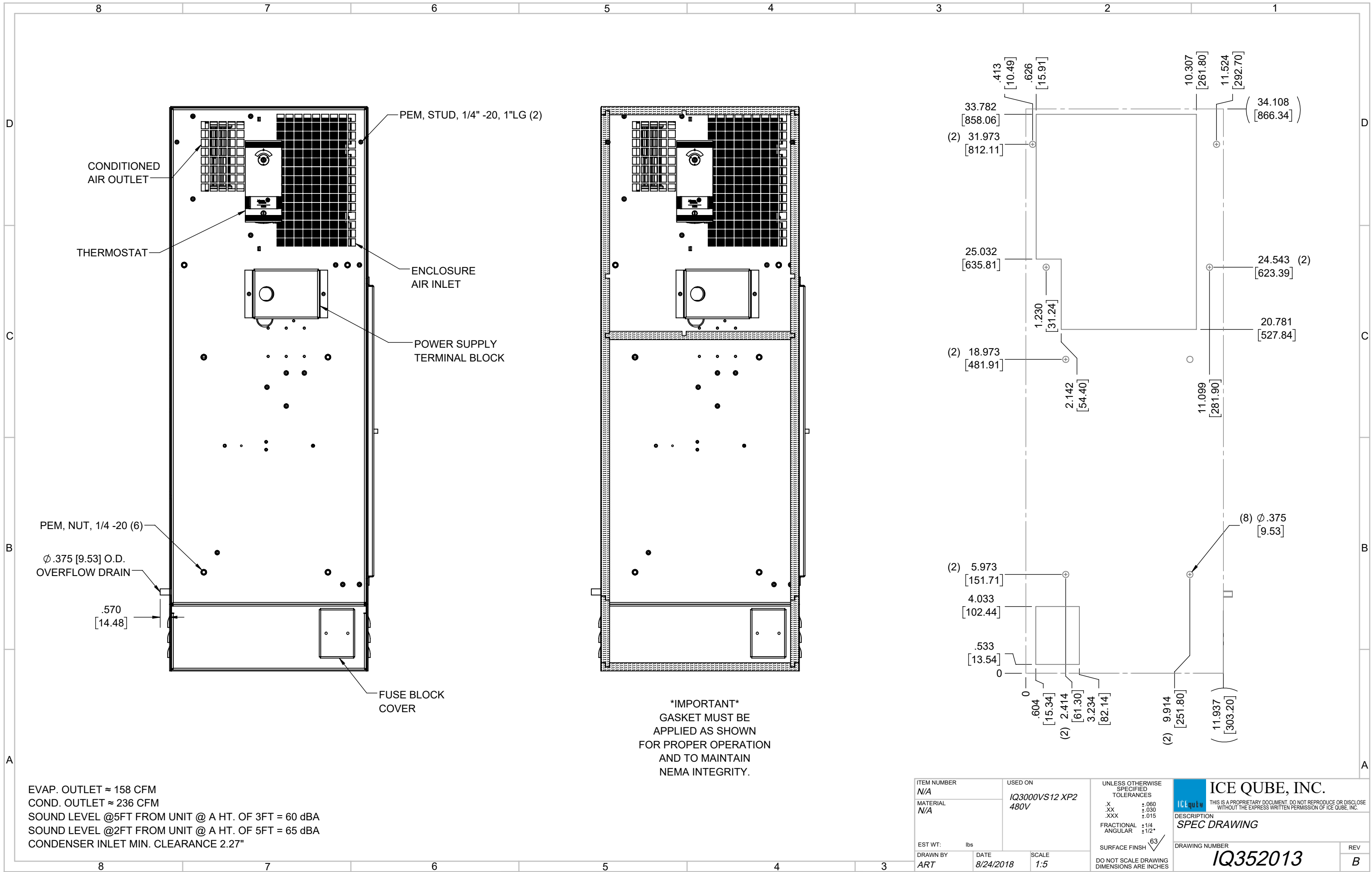


A IQ3000VS12
 COOLING CAPACITY: 3000 BTUH (880W) @131°F (55°C)
 MAXIMUM AMPS: 1.6 (768W) @480V/60HZ
 MAXIMUM OPERATING TEMP: 131°F (55°C)
 MINIMUM OPERATING TEMP: -40°F (-40°C)
 DIMENSIONS: 34.12" (867MM) H X 11.99" (305MM) W X 6.34" (161MM) D
 WEIGHT: 90 LBS (40.9KG)

ITEM NUMBER N/A MATERIAL N/A				USED ON IQ3000VS12 XP2 480V		UNLESS OTHERWISE SPECIFIED TOLERANCES .X ±.060 .XX ±.030 .XXX ±.015 FRACTIONAL ±1/16 ANGULAR ±1/2° SURFACE FINISH 63		ICE QUBE, INC. <small>THIS IS A PROPRIETARY DOCUMENT. DO NOT REPRODUCE OR DISCLOSE WITHOUT THE EXPRESS WRITTEN PERMISSION OF ICE QUBE, INC.</small> DESCRIPTION SPEC DRAWING DRAWING NUMBER IQ352013		
EST WT: lbs DRAWN BY ART				DATE 8/24/2018		SCALE 1:7		DO NOT SCALE DRAWING DIMENSIONS ARE INCHES		
B	CHANGED THERMOSTAT DIMENSIONS	NAT	2/25/2021		ECN-1434					
A	INITIAL DRAFT	RCC	9/7/2018							
REV	REVISION	CHG	DATE	APP	DATE	CN #				



EVAP. OUTLET ≈ 158 CFM
 COND. OUTLET ≈ 236 CFM
 SOUND LEVEL @5FT FROM UNIT @ A HT. OF 3FT = 60 dBA
 SOUND LEVEL @2FT FROM UNIT @ A HT. OF 5FT = 65 dBA
 CONDENSER INLET MIN. CLEARANCE 2.27"

ITEM NUMBER N/A	USED ON IQ3000VS12 XP2 480V	UNLESS OTHERWISE SPECIFIED TOLERANCES X ±.060 .XX ±.030 .XXX ±.015 FRACTIONAL ±1/4 ANGULAR ±1/2°	ICE QUBE, INC. THIS IS A PROPRIETARY DOCUMENT. DO NOT REPRODUCE OR DISCLOSE WITHOUT THE EXPRESS WRITTEN PERMISSION OF ICE QUBE, INC.
MATERIAL N/A		DESCRIPTION SPEC DRAWING	
EST. WT.: lbs	DRAWN BY ART	DATE 8/24/2018	DRAWING NUMBER IQ352013
		SCALE 1:5	REV B
DO NOT SCALE DRAWING DIMENSIONS ARE INCHES			