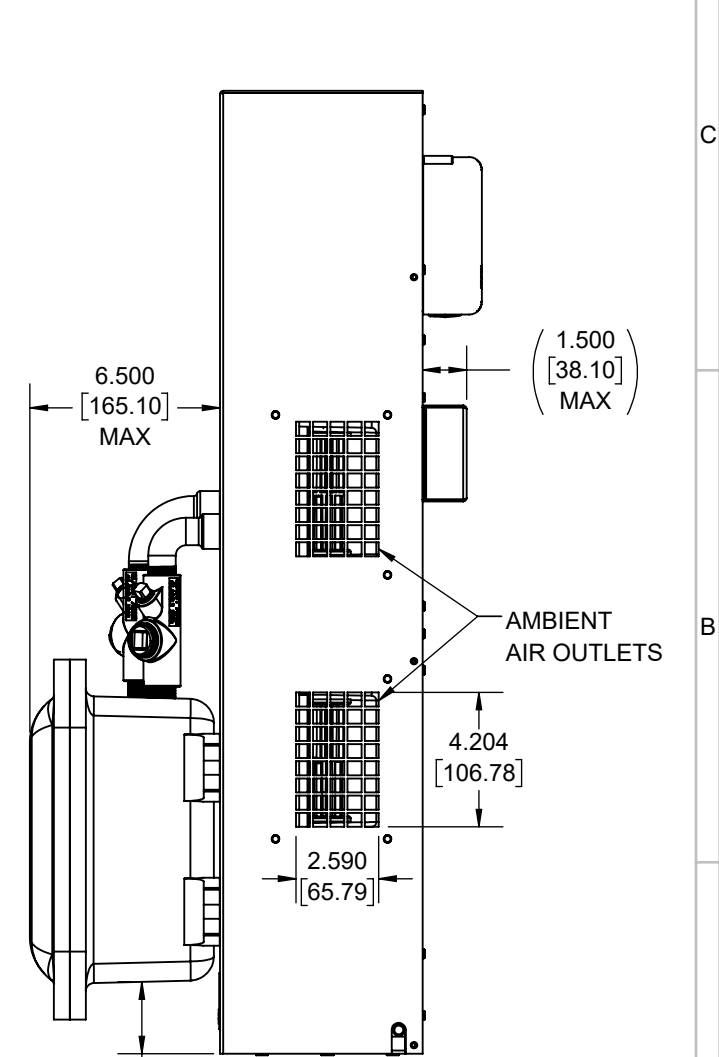
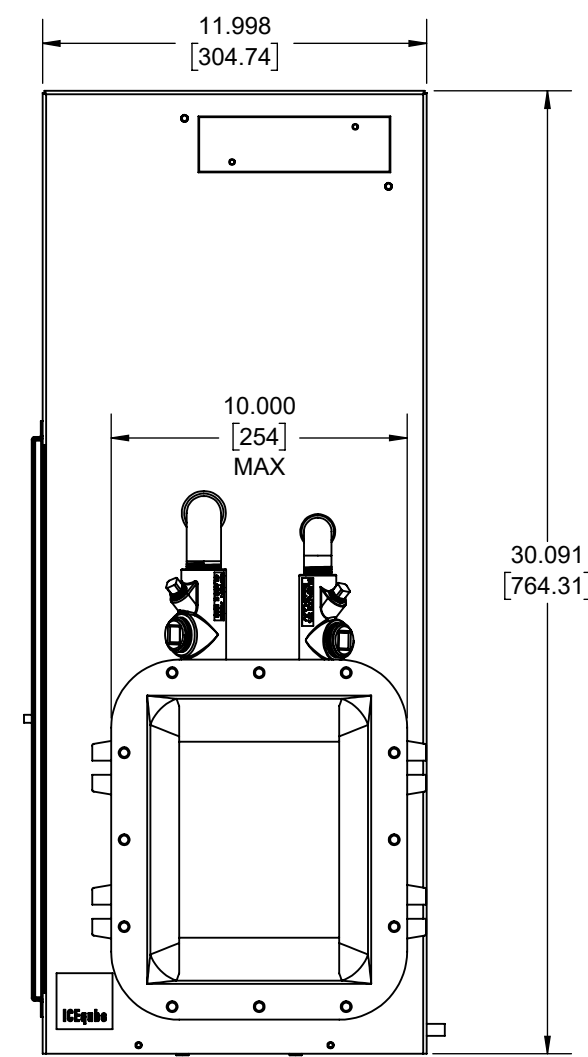
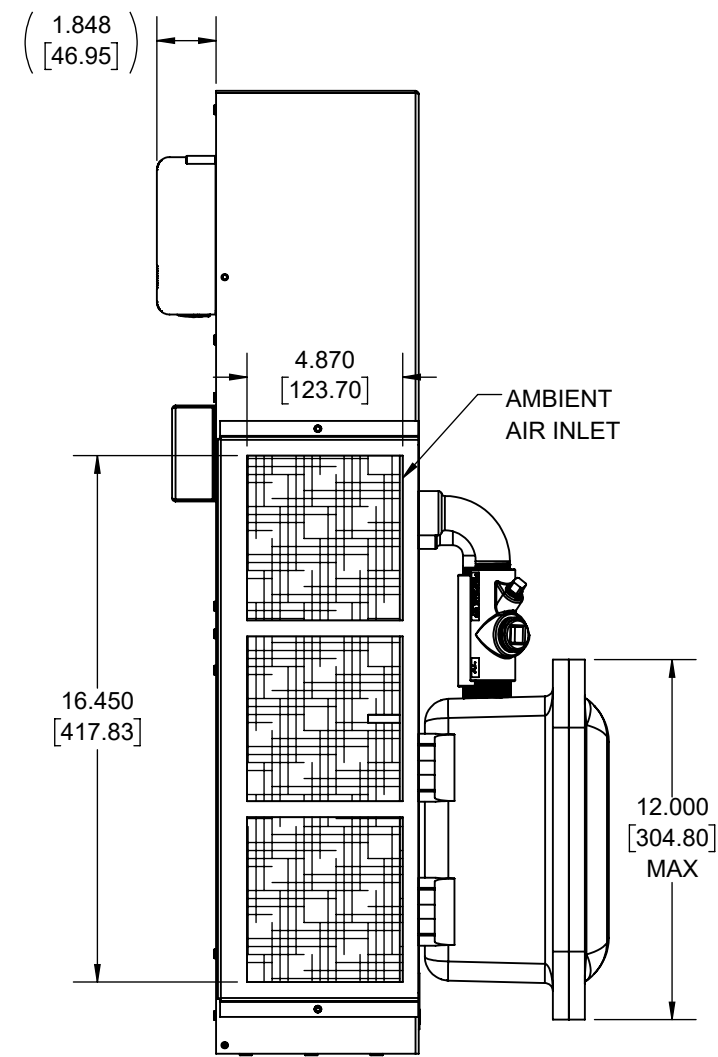
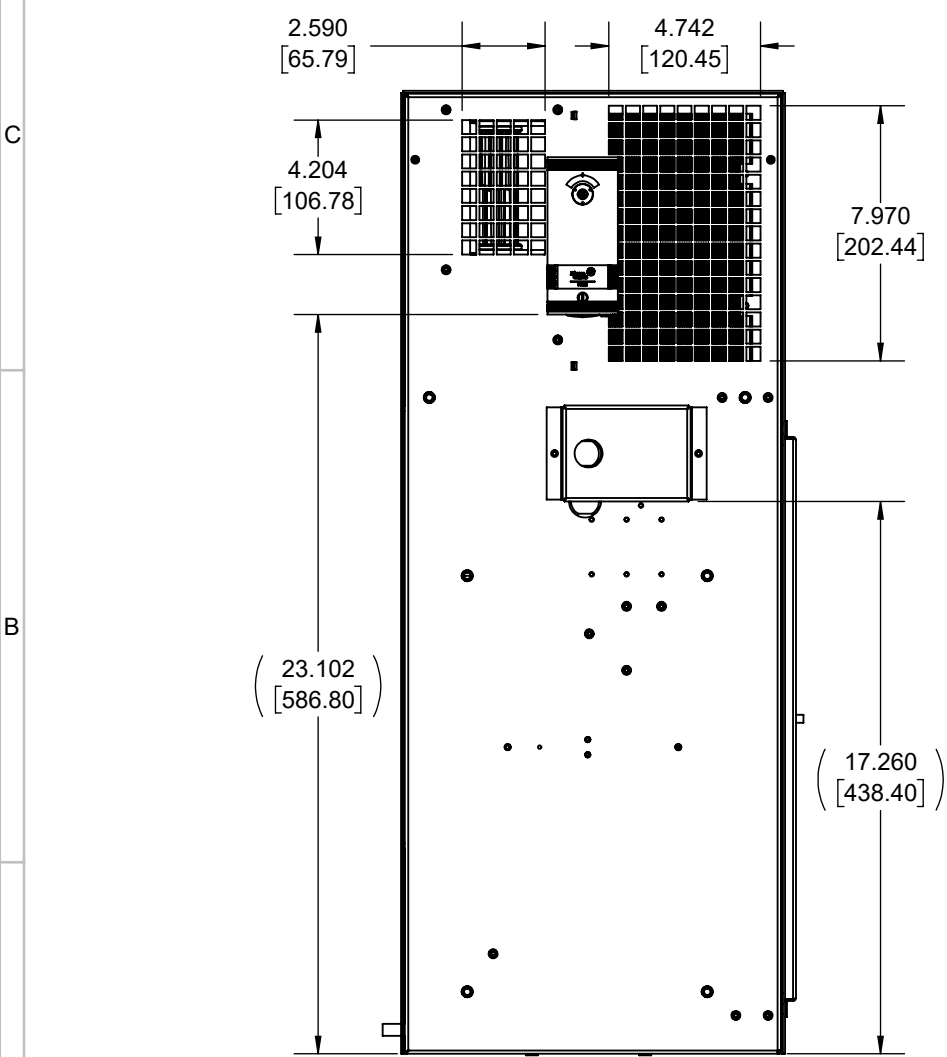
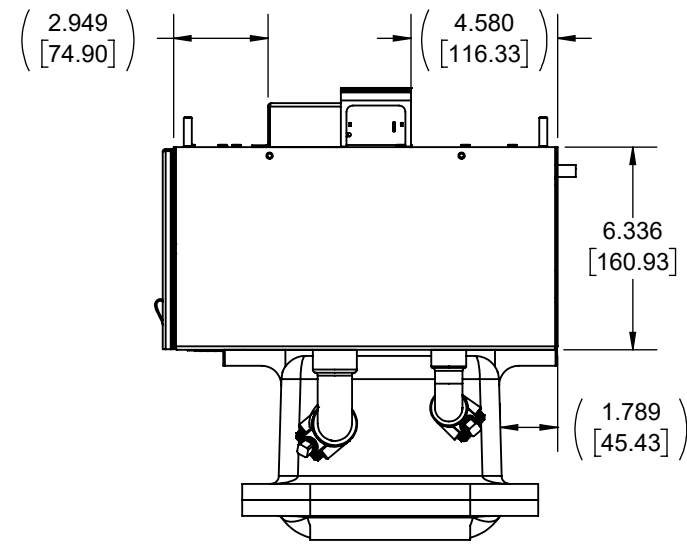
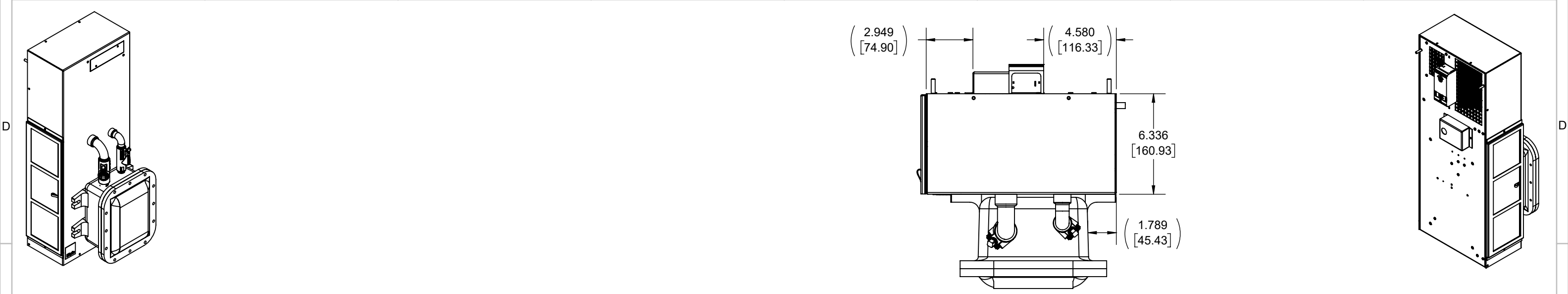


8 7 6 5 4 3 2 1



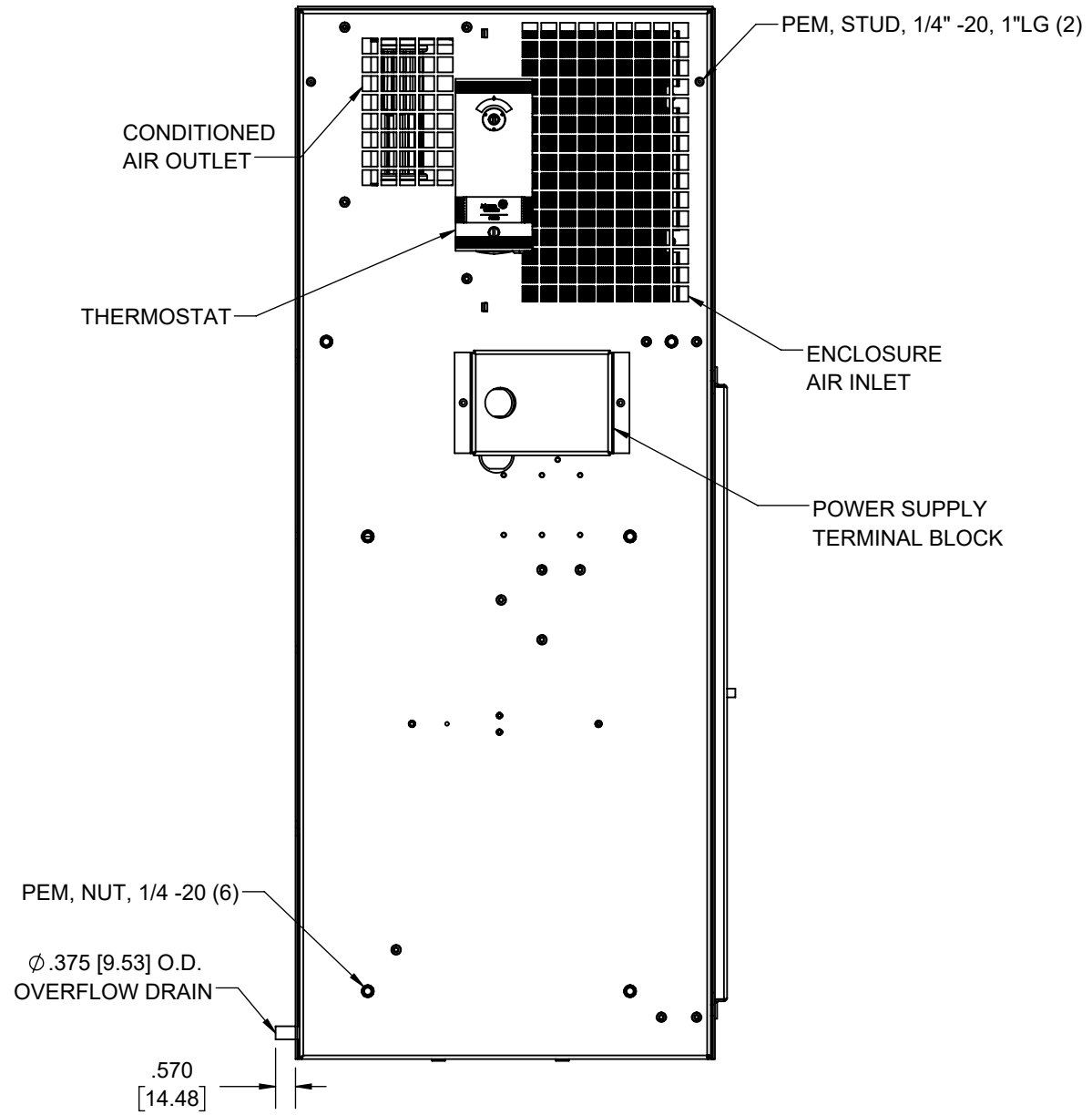
IQ3000VS12
 COOLING CAPACITY: 3000 BTUH (880W) @131°F (55°C)
 MAXIMUM AMPS: 6.9 (828W) @120V/60HZ
 MAXIMUM AMPS: 3.4 (782W) @230V/60HZ
 MAXIMUM OPERATING TEMP: 131°F (55°C)
 MINIMUM OPERATING TEMP: -40°F (-40°C)
 DIMENSIONS: 30.09" (764MM) H X 11.99" (305MM) W X 6.34" (161MM) D
 WEIGHT: 75 LBS (34.1KG)

ITEM NUMBER	N/A		USED ON	IQ3000VS12 XP2 120-230V	
MATERIAL	N/A		EST WT:	lbs	
REV	CHG	DATE	APP	DATE	CN #
B		2/25/2021			ECN-1434
A		9/7/2018			

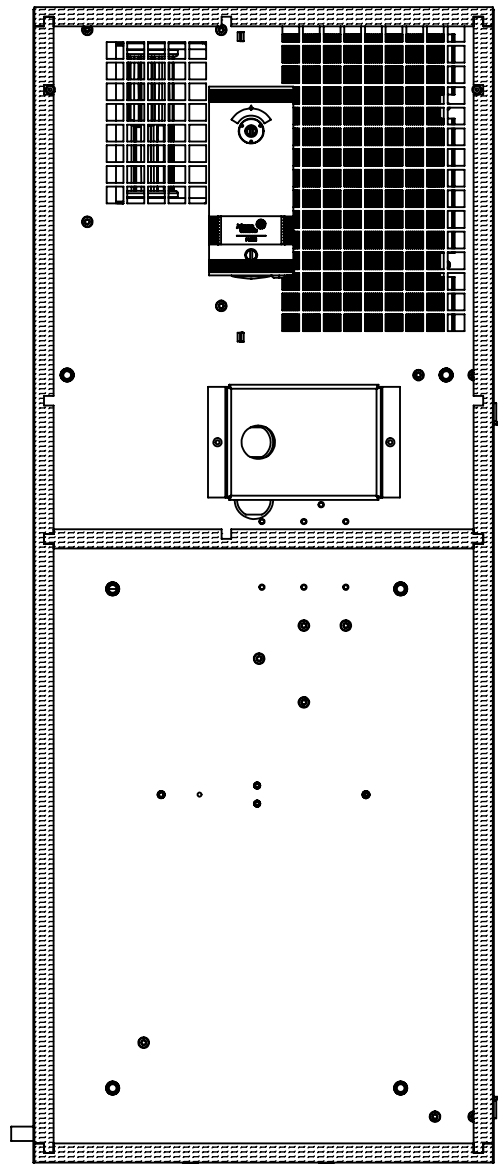
DESCRIPTION	SPEC DRAWING	
DRAWING NUMBER	IQ352012	
REV	B	

UNLESS OTHERWISE SPECIFIED TOLERANCES	±.060
.X	±.030
.XX	±.015
.XXX	±.010
FRACTIONAL	±1/16
ANGULAR	±1/2°
SURFACE FINISH	63
DO NOT SCALE DRAWING DIMENSIONS ARE INCHES	

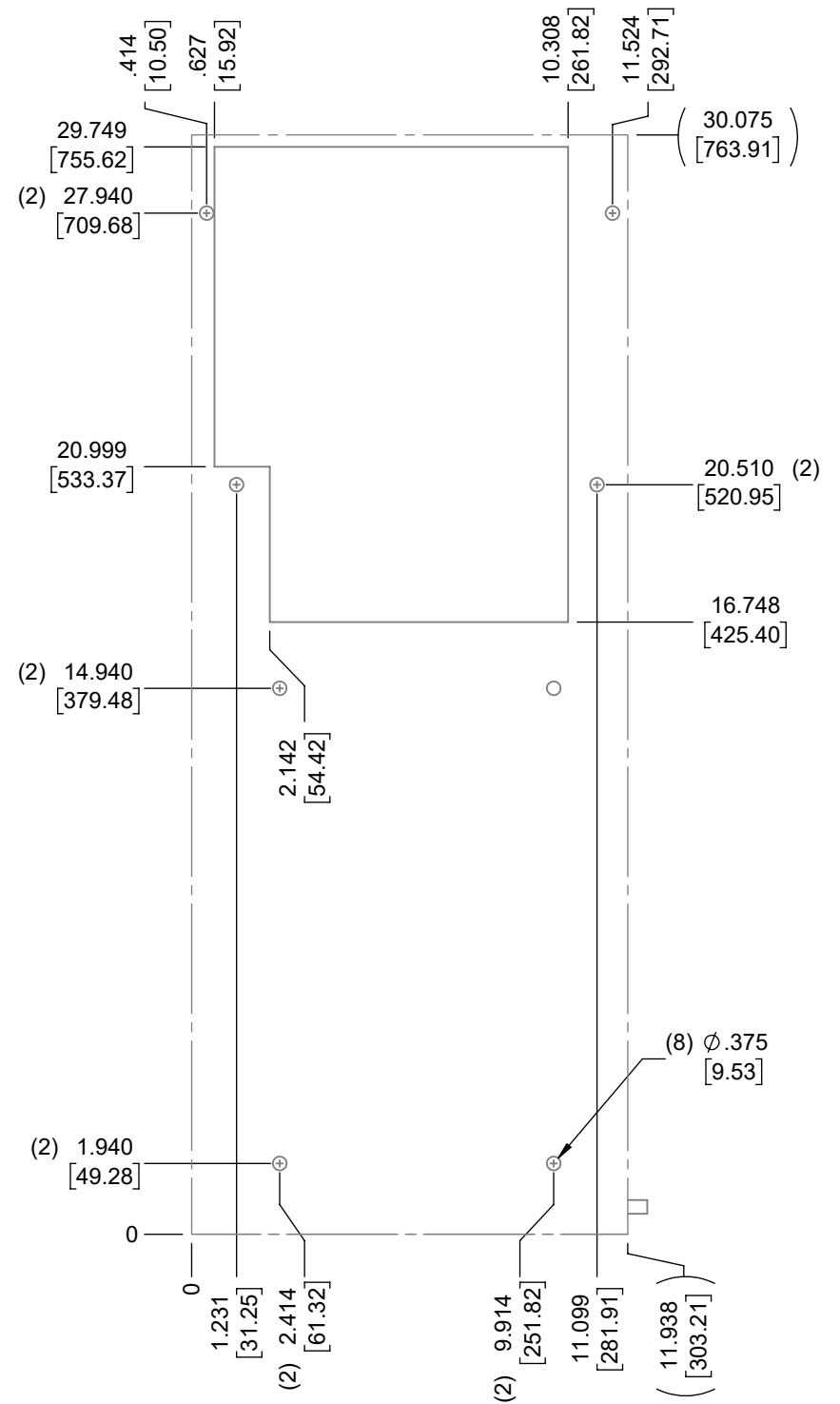
ICE QUBE, INC.
THIS IS A PROPRIETARY DOCUMENT. DO NOT REPRODUCE OR DISCLOSE WITHOUT THE EXPRESS WRITTEN PERMISSION OF ICE QUBE, INC.



PEM, STUD, 1/4" -20, 1"LG (2)



IMPORTANT
GASKET MUST BE APPLIED AS SHOWN FOR PROPER OPERATION AND TO MAINTAIN NEMA INTEGRITY.



EVAP. OUTLET ≈ 158 CFM
COND. OUTLET ≈ 236 CFM
SOUND LEVEL @5FT FROM UNIT @ A HT. OF 3FT = 60 dBA
SOUND LEVEL @2FT FROM UNIT @ A HT. OF 5FT = 65 dBA
CONDENSER INLET MIN. CLEARANCE 2.27"

ITEM NUMBER N/A	USED ON IQ3000VS12 XP2 120-230V	UNLESS OTHERWISE SPECIFIED TOLERANCES X ±.060 .XX ±.030 .XXX ±.015 FRACTIONAL ±1/4 ANGULAR ±1/2°	<p>ICE QUBE, INC. THIS IS A PROPRIETARY DOCUMENT. DO NOT REPRODUCE OR DISCLOSE WITHOUT THE EXPRESS WRITTEN PERMISSION OF ICE QUBE, INC.</p>
MATERIAL N/A			
EST WT: lbs	DATE 8/24/2018	SCALE 1:5	DESCRIPTION SPEC DRAWING
DRAWN BY ART			DRAWING NUMBER IQ352012
			REV B