

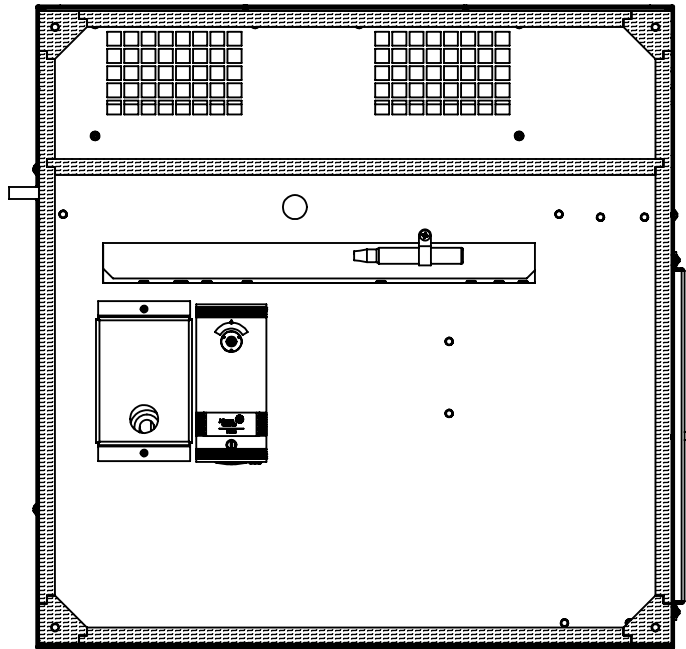
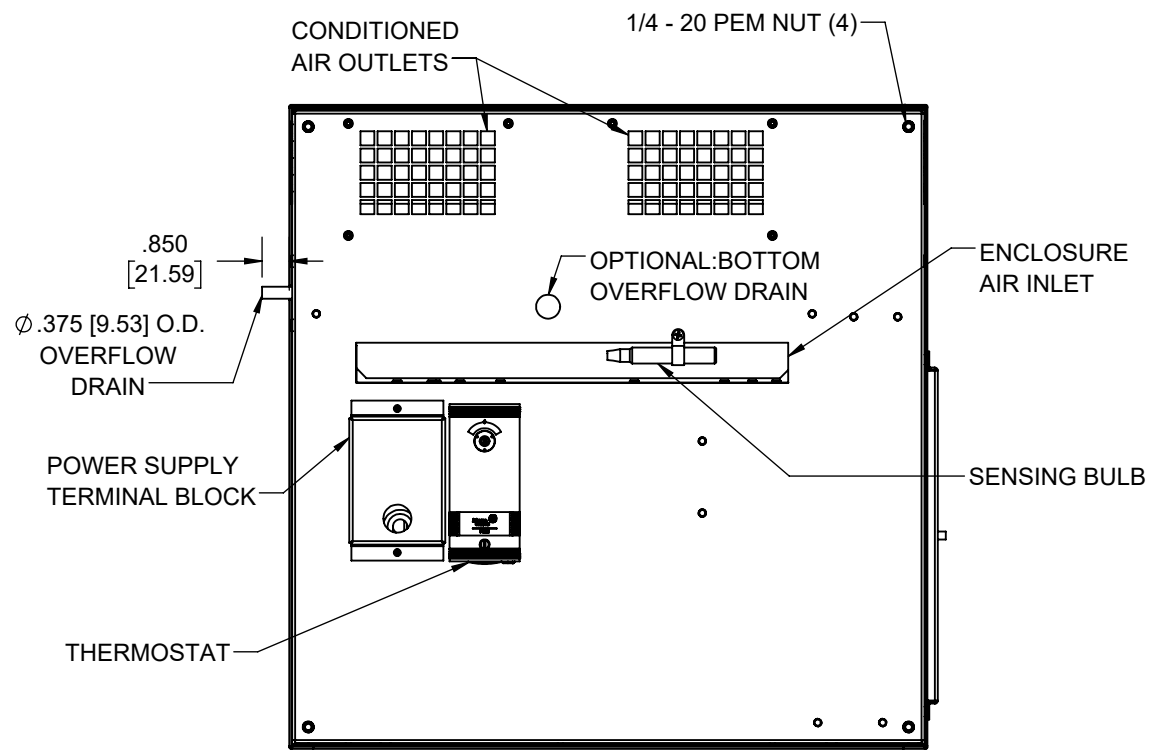
IQ3000T
 COOLING CAPACITY: 3000 BTUH (880W) @131°F (55°C)
 MAXIMUM AMPS: 7.5 (900W) @120V/60HZ
 MAXIMUM AMPS: 3.9 (897W) @230V/60HZ
 MAXIMUM OPERATING TEMP: 131°F (55°C)
 MINIMUM OPERATING TEMP: -4°F (-20°C)
 DIMENSIONS: 12.06" (306MM) H X 19.94" (507MM) W X 20.06" (510MM) D
 WEIGHT: 89 LBS (40.5KG)

REV	REVISION	CHG	DATE	APP	DATE	CN #
D	CHANGED THERMOSTAT DIMENSIONS	NAT	2/26/2021			ECN-1434
C	ADDED CFM, dBA, AND CLEARANCE INFO	RCC	3/28/2018			1351
B	ADDED WATTAGE INFO	RCC	1/3/2018			
A	REDRAWN IN SW	RCC	4/18/2017			

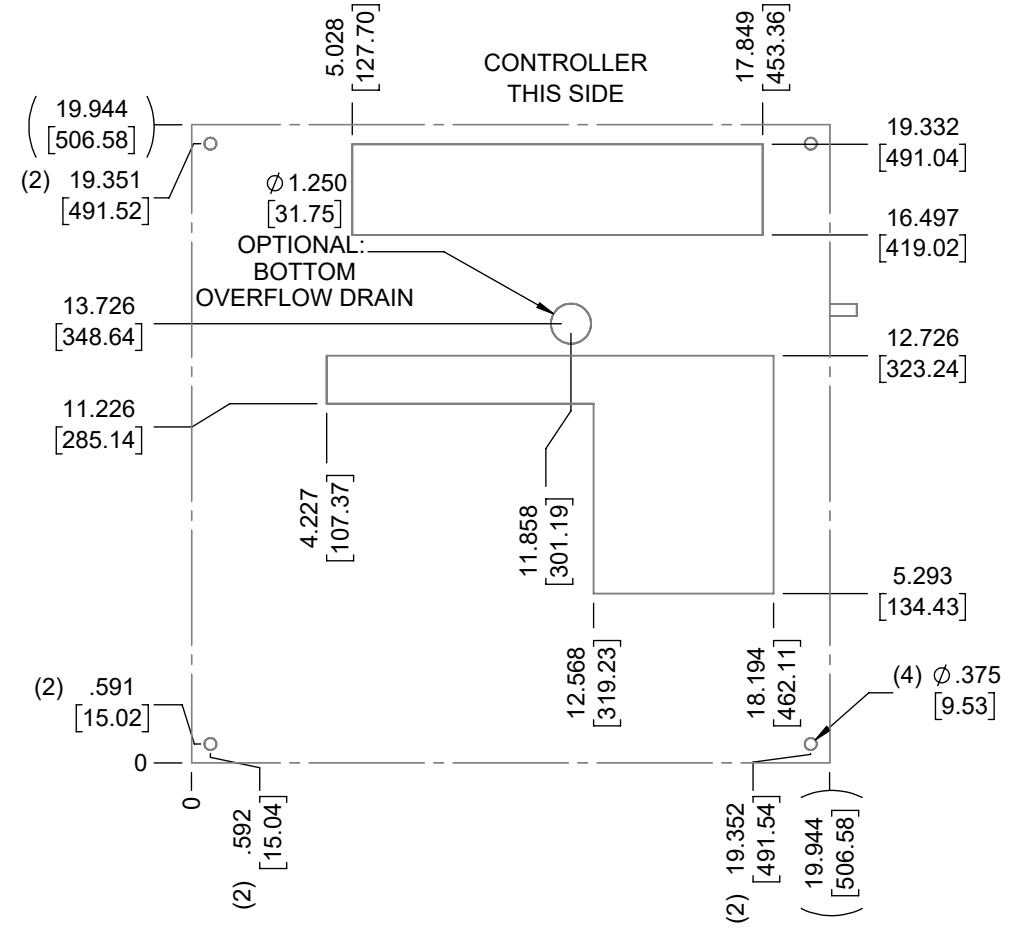
ITEM NUMBER	N/A	USED ON	IQ3000T
MATERIAL	N/A		
EST WT:	lbs		
DRAWN BY	RCC	DATE	4/19/2017
		SCALE	1:9

UNLESS OTHERWISE SPECIFIED TOLERANCES	
.X	±.060
.XX	±.030
.XXX	±.015
FRACTIONAL	±1/16
ANGULAR	±1/2°
SURFACE FINISH $\sqrt{63}$	
DO NOT SCALE DRAWING DIMENSIONS ARE INCHES	

ICE QUBE, INC.
THIS IS A PROPRIETARY DOCUMENT. DO NOT REPRODUCE OR DISCLOSE WITHOUT THE EXPRESS WRITTEN PERMISSION OF ICE QUBE, INC.
 DESCRIPTION
IQ3000T SPEC DRAWING XP2
 DRAWING NUMBER
IQ350391



IMPORTANT
 GASKET MUST BE
 APPLIED AS SHOWN
 FOR PROPER OPERATION
 AND TO MAINTAIN
 NEMA INTEGRITY.



EVAP. OUTLET ≈ 236 CFM
 COND. OUTLET ≈ 410 CFM
 SOUND LEVEL @5FT FROM UNIT @ A HT. OF 3FT = 59 dBA
 SOUND LEVEL @2FT FROM UNIT @ A HT. OF 5FT = 59 dBA
 CONDENSER INLET MIN. CLEARANCE 2.76"

ITEM NUMBER N/A	USED ON IQ3000T	UNLESS OTHERWISE SPECIFIED TOLERANCES X ±.060 XX ±.030 XXX ±.015 FRACTIONAL ±1/4 ANGULAR ±1/2°	<p>THIS IS A PROPRIETARY DOCUMENT. DO NOT REPRODUCE OR DISCLOSE WITHOUT THE EXPRESS WRITTEN PERMISSION OF ICE QUBE, INC.</p>
MATERIAL N/A		EST WT: lbs	
EST WT: lbs	DATE 4/19/2017	SCALE 1:6	DESCRIPTION IQ3000T SPEC DRAWING XP2
DRAWN BY RCC			DRAWING NUMBER IQ350391
			REV D