

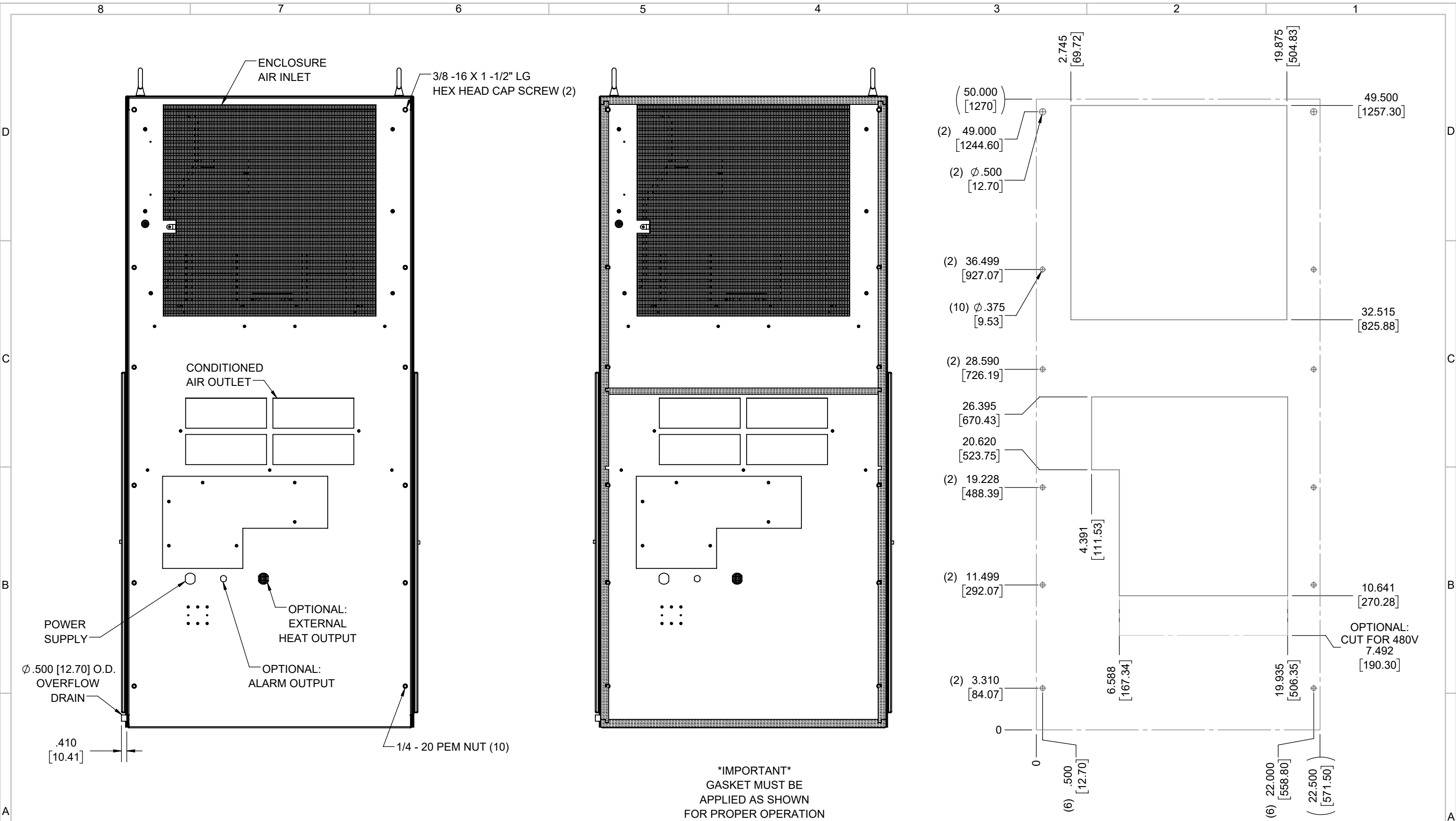
IQ27000V  
 COOLING CAPACITY: 27000 BTUH (7918W) @125°F (51.7°C)  
 MAXIMUM AMPS: 21.0/23.1 (4830/5313W) @230V/60/50HZ  
 MAXIMUM AMPS: 10.5/12.0 (5040/5760W) @480V/60/50HZ  
 MAXIMUM OPERATING TEMP: 125°F (51.7°C)  
 MINIMUM OPERATING TEMP: -40°F (-40°C)  
 DIMENSIONS: 50.10" (1272MM) H X 22.86" (581MM) W X 19.12" (486MM) D  
 230V WEIGHT: 290 LBS (131.8KG)  
 480V WEIGHT: 330 LBS (150KG)

REV	REVISION	CHG	DATE	APP	DATE	CN #
E	ADDED 480V CUTOFF OPTION	NAT	11/14/2019			
D	UPDATED VOLTAGE INFO	RCC	3/21/2019			
C	ADDED CFM, dBA, AND CLEARANCE INFO	RCC	3/30/2018			1351
B	ADDED WATTAGE INFO	RCC	1/4/2018			
A	REDRAWN IN SW, ADDED 480V INFO	RCC	4/17/2017			

ITEM NUMBER N/A	USED ON IQ27000V
MATERIAL N/A	
EST WT: lbs	
DRAWN BY RCC	DATE 4/17/2017
	SCALE 1:12

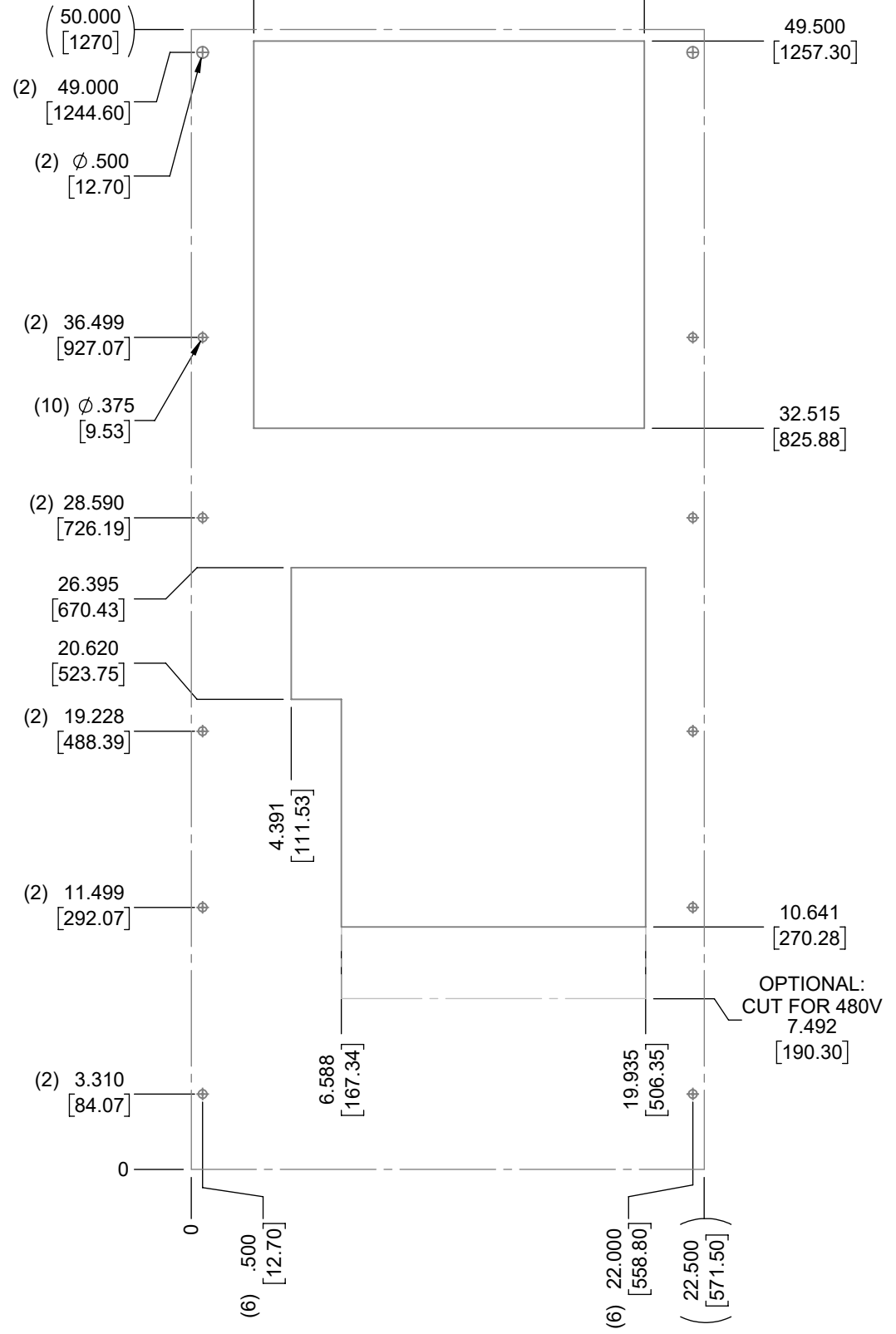
UNLESS OTHERWISE SPECIFIED TOLERANCES	
.X	±.060
.XX	±.030
.XXX	±.015
FRACTIONAL	±1/16
ANGULAR	±1/2°
SURFACE FINISH $\sqrt{63}$	
DO NOT SCALE DRAWING DIMENSIONS ARE INCHES	

**ICE QUBE, INC.**  
THIS IS A PROPRIETARY DOCUMENT. DO NOT REPRODUCE OR DISCLOSE WITHOUT THE EXPRESS WRITTEN PERMISSION OF ICE QUBE, INC.  
 DESCRIPTION  
**IQ27000V SPEC DRAWING**  
 DRAWING NUMBER  
**IQ320409**



**\*IMPORTANT\***  
 GASKET MUST BE  
 APPLIED AS SHOWN  
 AND TO MAINTAIN  
 NEMA INTEGRITY.

EVAP. OUTLET ≈ 839 CFM  
 COND. OUTLET ≈ 1575 CFM  
 SOUND LEVEL @5FT FROM UNIT @ A HT. OF 3FT = 69 dBA  
 SOUND LEVEL @2FT FROM UNIT @ A HT. OF 5FT = 68 dBA  
 CONDENSER INLET MIN. CLEARANCE 3.06" EACH SIDE



ITEM NUMBER N/A	USED ON IQ27000V	UNLESS OTHERWISE SPECIFIED TOLERANCES X ±.060 .XX ±.030 .XXX ±.015 FRACTIONAL ±1/4 ANGULAR ±1/2°	<p>ICE QUBE, INC.  <small>THIS IS A PROPRIETARY DOCUMENT. DO NOT REPRODUCE OR DISCLOSE WITHOUT THE EXPRESS WRITTEN PERMISSION OF ICE QUBE, INC.</small></p>
MATERIAL N/A		<p>EST WT: lbs</p> <p>DRAWN BY: RCC DATE: 4/17/2017 SCALE: 1:7</p> <p>DO NOT SCALE DRAWING DIMENSIONS ARE INCHES</p>	
DESCRIPTION IQ27000V SPEC DRAWING			DRAWING NUMBER IQ320409
			REV E