

IQ2500V
 COOLING CAPACITY: 2500 BTUH (733W) @131°F (55°C)
 MAXIMUM AMPS: 1.7 (816W) @480V/60HZ
 MAXIMUM OPERATING TEMP: 131°F (55°C)
 MINIMUM OPERATING TEMP: -40°F (-40°C)
 DIMENSIONS: 32.50" (826MM) H X 19.31" (490MM) W X 6.41" (163MM) D
 WEIGHT: 86 LBS (39.1KG)

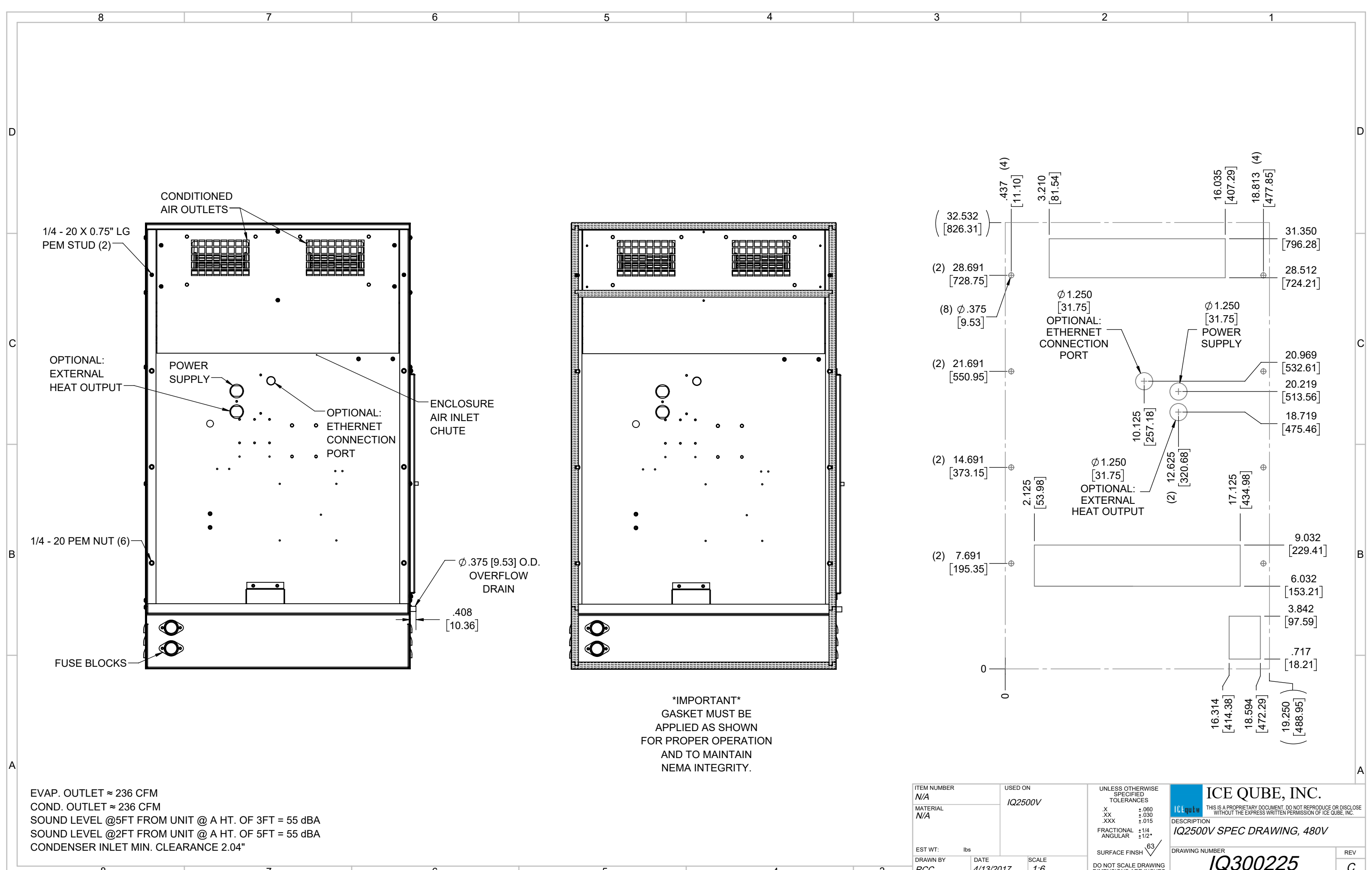
REV	CHG	DATE	APP	DATE	CN #
C		3/28/2018	RCC		1351
B		1/3/2018	RCC		
A		4/13/2017	RCC		

ITEM NUMBER	N/A
MATERIAL	N/A
EST WT:	lbs
DRAWN BY	RCC
DATE	4/13/2017

USED ON	IQ2500V
SCALE	1:7

UNLESS OTHERWISE SPECIFIED TOLERANCES	
.X	±.060
.XX	±.030
.XXX	±.015
FRACTIONAL	±1/16
ANGULAR	±1/2°
SURFACE FINISH	63
DO NOT SCALE DRAWING DIMENSIONS ARE INCHES	

ICE QUBE, INC.
THIS IS A PROPRIETARY DOCUMENT. DO NOT REPRODUCE OR DISCLOSE WITHOUT THE EXPRESS WRITTEN PERMISSION OF ICE QUBE, INC.
 DESCRIPTION
IQ2500V SPEC DRAWING, 480V
 DRAWING NUMBER
IQ300225
 REV
C



IMPORTANT
 GASKET MUST BE APPLIED AS SHOWN FOR PROPER OPERATION AND TO MAINTAIN NEMA INTEGRITY.

EVAP. OUTLET ≈ 236 CFM
 COND. OUTLET ≈ 236 CFM
 SOUND LEVEL @5FT FROM UNIT @ A HT. OF 3FT = 55 dBA
 SOUND LEVEL @2FT FROM UNIT @ A HT. OF 5FT = 55 dBA
 CONDENSER INLET MIN. CLEARANCE 2.04"

ITEM NUMBER N/A	USED ON IQ2500V	UNLESS OTHERWISE SPECIFIED TOLERANCES X ±.060 .XX ±.030 .XXX ±.015 FRACTIONAL ±1/4 ANGULAR ±1/2°	<p>THIS IS A PROPRIETARY DOCUMENT. DO NOT REPRODUCE OR DISCLOSE WITHOUT THE EXPRESS WRITTEN PERMISSION OF ICE QUBE, INC.</p>
MATERIAL N/A		DESCRIPTION IQ2500V SPEC DRAWING, 480V	
EST WT: lbs	DRAWN BY RCC	DATE 4/13/2017	DRAWING NUMBER IQ300225
		SCALE 1:6	REV C