

IQ2500V
 COOLING CAPACITY: 2500 BTUH (733W) @131°F (55°C)
 MAXIMUM AMPS: 7.3 (876W) @120V/60HZ
 MAXIMUM AMPS: 3.5 (805W) @230V/60HZ
 MAXIMUM OPERATING TEMP: 131°F (55°C)
 MINIMUM OPERATING TEMP: -40°F (-40°C)
 DIMENSIONS: 28.50" (724MM) H X 19.31" (490MM) W X 6.41" (163MM) D
 WEIGHT: 71 LBS (32.3KG)

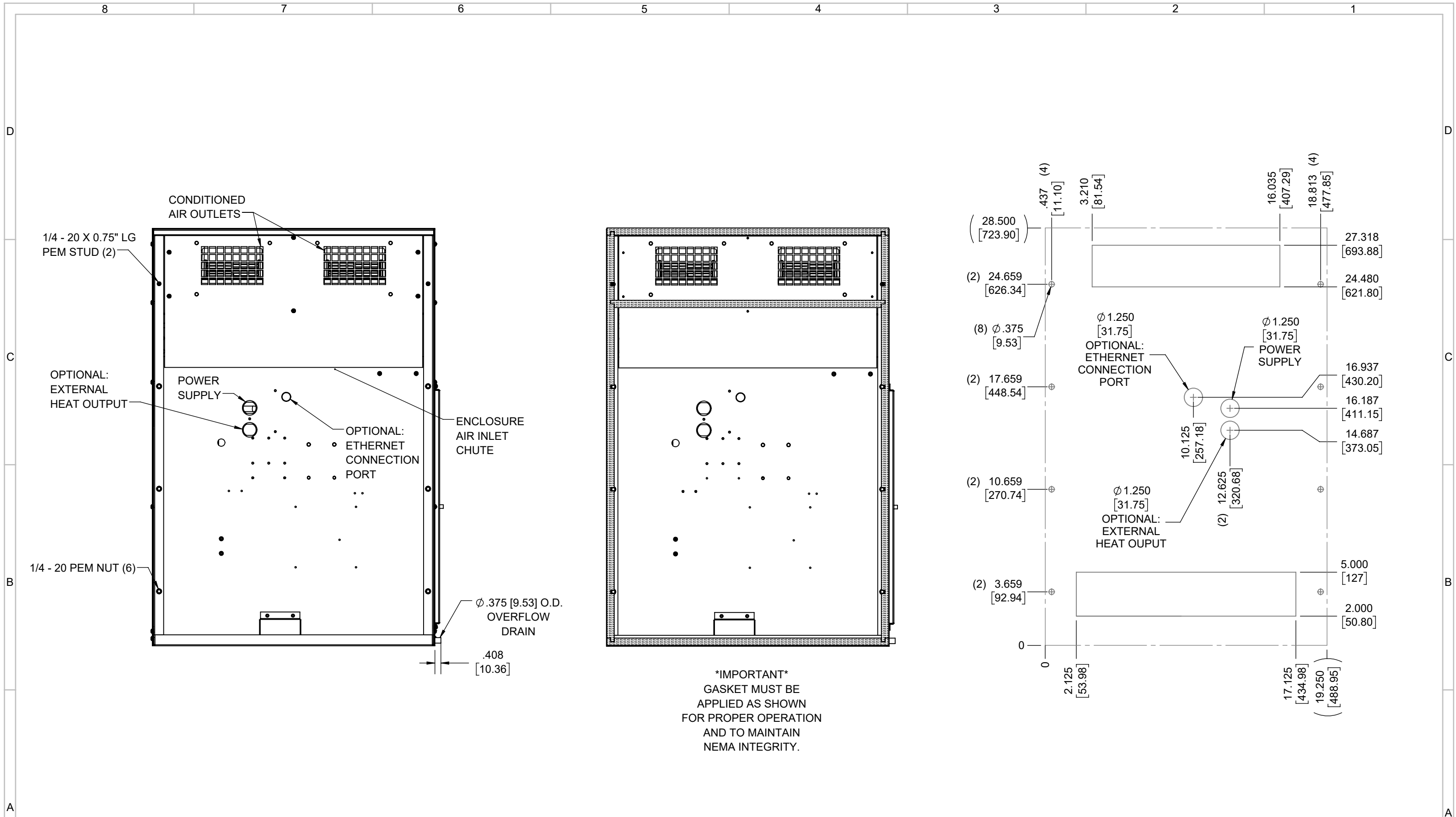
REV	REVISION	CHG	DATE	APP	DATE	CN #
C	ADDED CFM, dBA, AND CLEARANCE INFO	RCC	3/28/2018			1351
B	ADDED WATTAGE INFO	RCC	1/3/2018			
A	REDRAWN IN SW	RCC	4/13/2017			

ITEM NUMBER	N/A
MATERIAL	N/A
EST WT:	lbs
DRAWN BY	RCC

USED ON	IQ2500V
DATE	4/13/2017
SCALE	1:7

UNLESS OTHERWISE SPECIFIED TOLERANCES	
.X	±.060
.XX	±.030
.XXX	±.015
FRACTIONAL	±1/16
ANGULAR	±1/2°
SURFACE FINISH	63
DO NOT SCALE DRAWING DIMENSIONS ARE INCHES	

ICE QUBE, INC.
THIS IS A PROPRIETARY DOCUMENT. DO NOT REPRODUCE OR DISCLOSE WITHOUT THE EXPRESS WRITTEN PERMISSION OF ICE QUBE, INC.
 DESCRIPTION
IQ2500V SPEC DRAWING
 DRAWING NUMBER
IQ300228
 REV
C



EVAP. OUTLET ≈ 236 CFM
 COND. OUTLET ≈ 236 CFM
 SOUND LEVEL @5FT FROM UNIT @ A HT. OF 3FT = 55 dBA
 SOUND LEVEL @2FT FROM UNIT @ A HT. OF 5FT = 55 dBA
 CONDENSER INLET MIN. CLEARANCE 2.04"

ITEM NUMBER N/A	USED ON IQ2500V	UNLESS OTHERWISE SPECIFIED TOLERANCES X ±.060 .XX ±.030 .XXX ±.015 FRACTIONAL ±1/4 ANGULAR ±1/2°	<p>ICE QUBE, INC. <small>THIS IS A PROPRIETARY DOCUMENT. DO NOT REPRODUCE OR DISCLOSE WITHOUT THE EXPRESS WRITTEN PERMISSION OF ICE QUBE, INC.</small></p>
MATERIAL N/A		<p>EST WT: lbs</p> <p>DRAWN BY RCC</p> <p>DATE 4/13/2017</p> <p>SCALE 1:6</p> <p>DO NOT SCALE DRAWING DIMENSIONS ARE INCHES</p>	
DESCRIPTION IQ2500V SPEC DRAWING			DRAWING NUMBER IQ300228
REV C			