

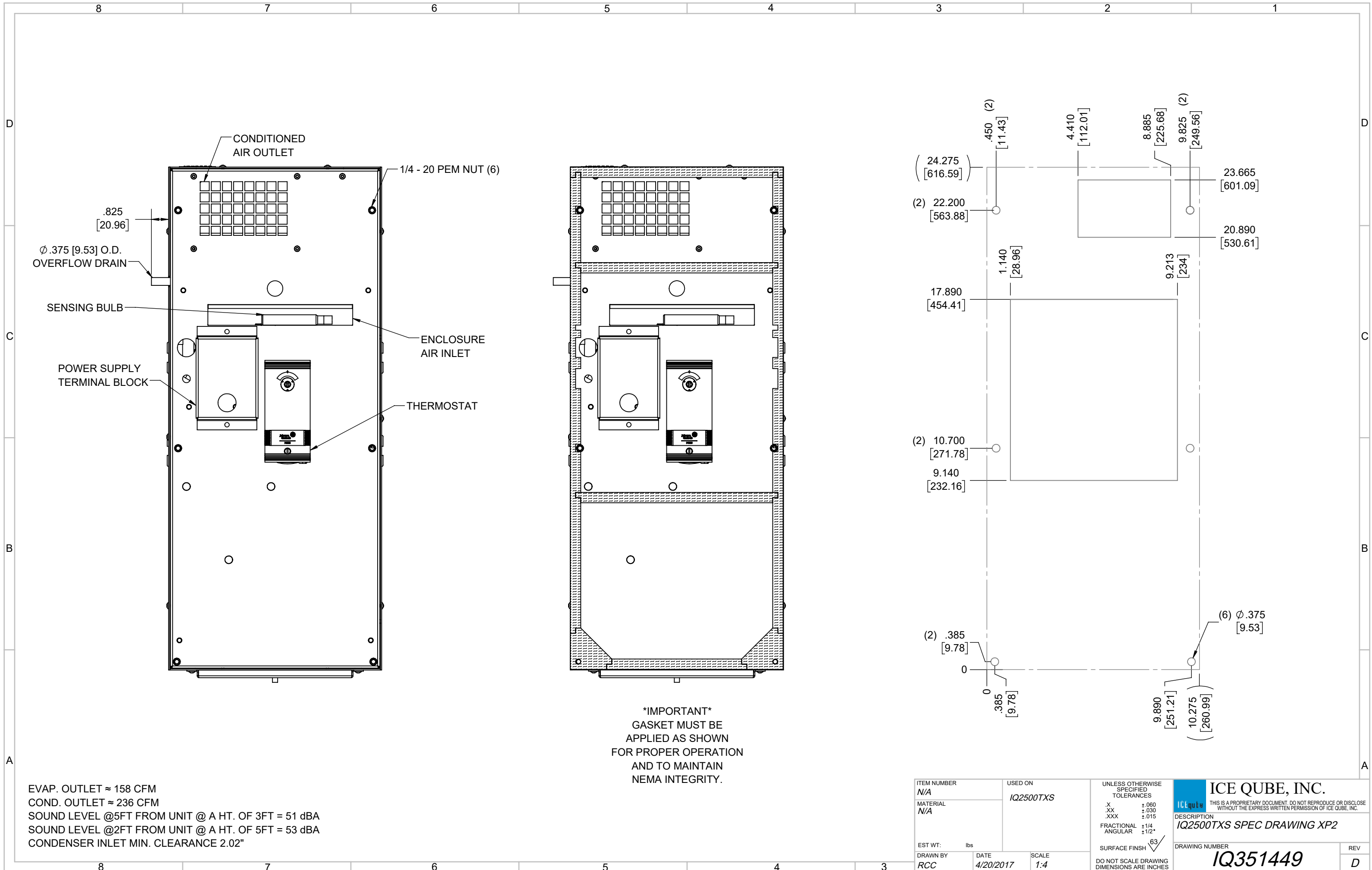
**IQ2500TXS**  
 COOLING CAPACITY: 2500 BTUH (733W) @131°F (55°C)  
 MAXIMUM AMPS: 7.6 (912W) @120V/60HZ  
 MAXIMUM AMPS: 3.6 (828W) @230V/60HZ  
 MAXIMUM OPERATING TEMP: 131°F (55°C)  
 MINIMUM OPERATING TEMP: -4°F (-20°C)  
 DIMENSIONS: 9.25" (235MM) H X 10.31" (262MM) W X 24.31" (617MM) D  
 WEIGHT: 70 LBS (31.8KG)

REV	REVISION	CHG	DATE	APP	DATE	CN #
D	CHANGED THERMOSTAT DIMENSIONS	NAT	2/26/2021			ECN-1434
C	ADDED CFM, dBA, AND CLEARANCE INFO	RCC	3/28/2018			1351
B	ADDED WATTAGE INFO	RCC	1/2/2018			
A	REDRAWN IN SW	RCC	4/20/2017			

ITEM NUMBER	N/A	USED ON	IQ2500TXS
MATERIAL	N/A		
EST WT:	lbs		
DRAWN BY	RCC	DATE	4/20/2017
		SCALE	1:6

UNLESS OTHERWISE SPECIFIED TOLERANCES	
X	±.060
.XX	±.030
.XXX	±.015
FRACTIONAL	±1/16
ANGULAR	±1/2°
SURFACE FINISH $\sqrt{63}$	
DO NOT SCALE DRAWING DIMENSIONS ARE INCHES	

**ICE QUBE, INC.**  
THIS IS A PROPRIETARY DOCUMENT. DO NOT REPRODUCE OR DISCLOSE WITHOUT THE EXPRESS WRITTEN PERMISSION OF ICE QUBE, INC.  
 DESCRIPTION  
**IQ2500TXS SPEC DRAWING XP2**  
 DRAWING NUMBER  
**IQ351449**  
 REV  
**D**



EVAP. OUTLET ≈ 158 CFM  
 COND. OUTLET ≈ 236 CFM  
 SOUND LEVEL @5FT FROM UNIT @ A HT. OF 3FT = 51 dBA  
 SOUND LEVEL @2FT FROM UNIT @ A HT. OF 5FT = 53 dBA  
 CONDENSER INLET MIN. CLEARANCE 2.02"

ITEM NUMBER N/A	USED ON IQ2500TXS	UNLESS OTHERWISE SPECIFIED TOLERANCES X ±.060 .XX ±.030 .XXX ±.015 FRACTIONAL ±1/4 ANGULAR ±1/2°	<p>ICE QUBE, INC.  <small>THIS IS A PROPRIETARY DOCUMENT. DO NOT REPRODUCE OR DISCLOSE WITHOUT THE EXPRESS WRITTEN PERMISSION OF ICE QUBE, INC.</small></p>
MATERIAL N/A		<p>EST WT: lbs</p> <p>DRAWN BY: RCC</p> <p>DATE: 4/20/2017</p> <p>SCALE: 1:4</p> <p>DO NOT SCALE DRAWING DIMENSIONS ARE INCHES</p>	
DESCRIPTION IQ2500TXS SPEC DRAWING XP2			DRAWING NUMBER IQ351449
REV			D