

IQ2500IXS
 COOLING CAPACITY: 2500 BTUH (733W) @131 °F (55 °C)
 MAXIMUM AMPS: 7.6 (912W) @120V/60HZ
 MAXIMUM AMPS: 3.6 (828W) @230V/60HZ
 MAXIMUM OPERATING TEMP: 131 °F (55 °C)
 MINIMUM OPERATING TEMP: -40 °F (-40 °C)
 DIMENSIONS: 9.25" (235MM) H X 10.31" (262MM) W X 24.31" (617MM) D
 WEIGHT: 50 LBS (22.7KG)

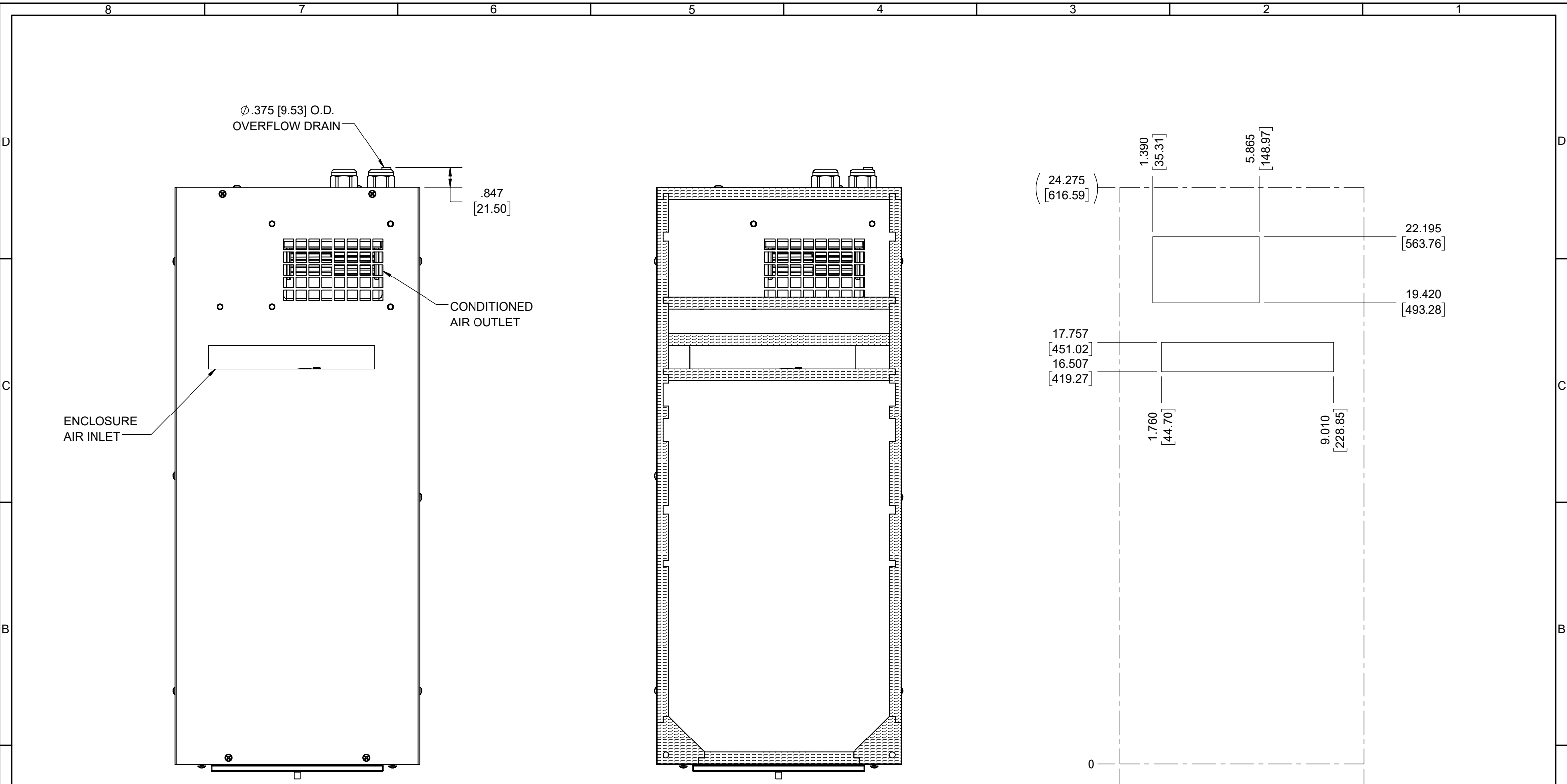
REV	DESCRIPTION	CHG	DATE	APP	DATE	CN #
B	RENAMED TO IXS	JWS	1/27/2020			
A	INITIAL DRAFT	RCC	9/6/2018			

ITEM NUMBER	N/A
MATERIAL	N/A
EST WT:	lbs
DRAWN BY	RCC

USED ON	IQ2500IXS
DATE	9/6/2018
SCALE	1:6

UNLESS OTHERWISE SPECIFIED TOLERANCES	
.X	±.060
.XX	±.030
.XXX	±.015
FRACTIONAL	±1/16
ANGULAR	±1/2°
SURFACE FINISH	63
DO NOT SCALE DRAWING DIMENSIONS ARE INCHES	

ICE QUBE, INC.
THIS IS A PROPRIETARY DOCUMENT. DO NOT REPRODUCE OR DISCLOSE WITHOUT THE EXPRESS WRITTEN PERMISSION OF ICE QUBE, INC.
 DESCRIPTION
IQ2500IXS INTERNAL MOUNT SPEC DRAWING
 DRAWING NUMBER
IQ351997



IMPORTANT
 GASKET MUST BE APPLIED AS SHOWN FOR PROPER OPERATION AND TO MAINTAIN NEMA INTEGRITY.

EVAP. OUTLET \approx 158 CFM
 COND. OUTLET \approx 236 CFM
 SOUND LEVEL @5FT FROM UNIT @ A HT. OF 3FT = 51 dBA
 SOUND LEVEL @2FT FROM UNIT @ A HT. OF 5FT = 53 dBA
 CONDENSER INLET MIN. CLEARANCE 2.02"

ITEM NUMBER N/A	USED ON IQ2500IXS	UNLESS OTHERWISE SPECIFIED TOLERANCES X \pm .060 .XX \pm .030 .XXX \pm .015 FRACTIONAL \pm 1/4 ANGULAR \pm 1/2°	ICE QUBE, INC. <small>THIS IS A PROPRIETARY DOCUMENT. DO NOT REPRODUCE OR DISCLOSE WITHOUT THE EXPRESS WRITTEN PERMISSION OF ICE QUBE, INC.</small> DESCRIPTION IQ2500IXS INTERNAL MOUNT SPEC DRAWING DRAWING NUMBER IQ351997
MATERIAL N/A		SURFACE FINISH \checkmark 63	
EST. WT. lbs		DO NOT SCALE DRAWING DIMENSIONS ARE INCHES	REV B
DRAWN BY RCC	DATE 9/6/2018	SCALE 1:4	