

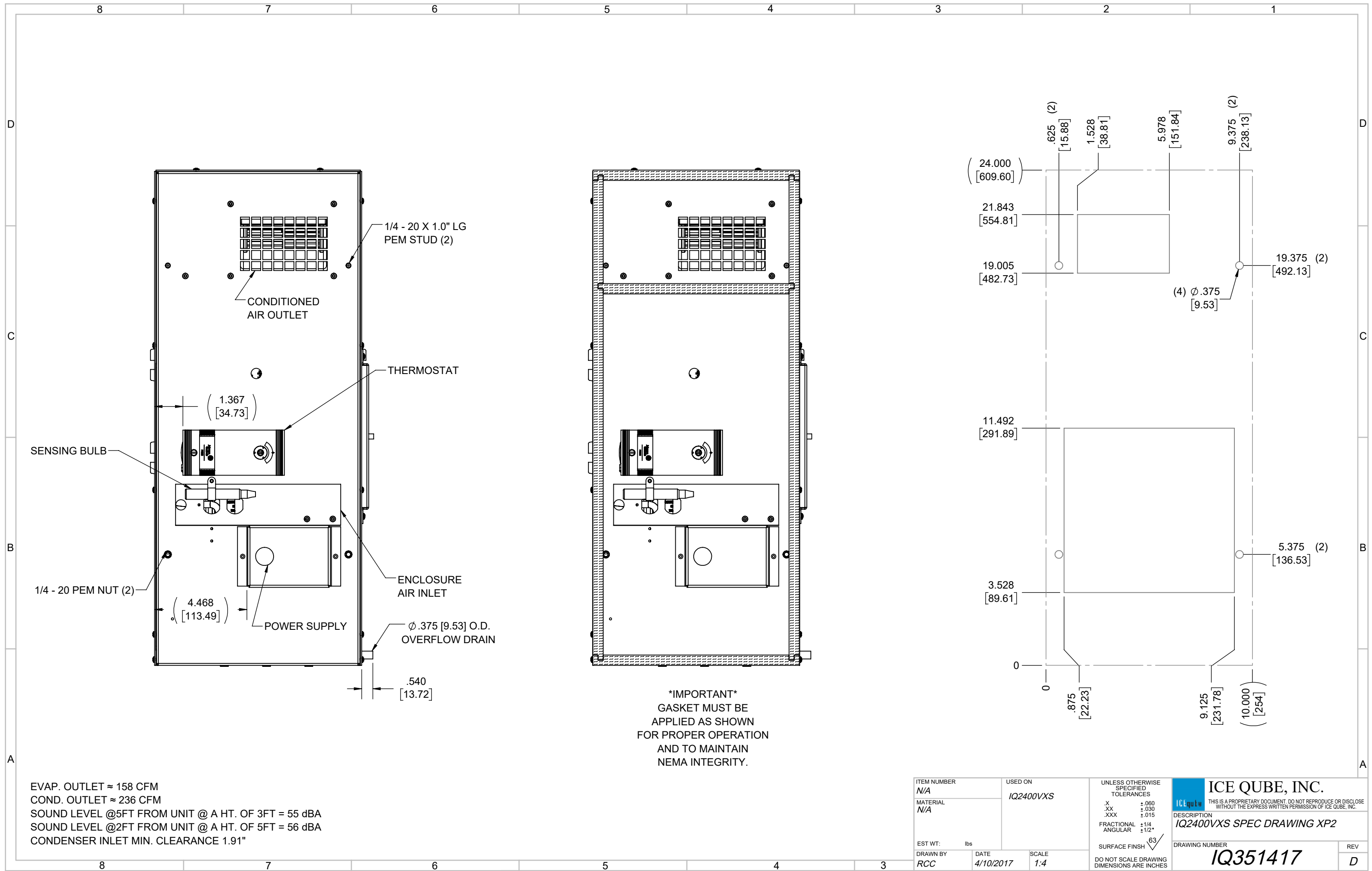
IQ2400VXS
 COOLING CAPACITY: 2400 BTUH (704W) @125°F (51.7°C)
 MAXIMUM AMPS: 7.1 (852W) @120V/60HZ
 MAXIMUM AMPS: 3.5 (805W) @230V/60HZ
 MAXIMUM OPERATING TEMP: 125°F (51.7°C)
 MINIMUM OPERATING TEMP: -4°F (-20°C)
 DIMENSIONS: 24.00" (610MM) H X 10.03" (255MM) W X 10.00" (254MM) D
 WEIGHT: 80 LBS (36.4KG)

REV	DESCRIPTION	CHG	DATE	APP	DATE	CN #
D	CHANGED THERMOSTAT DIMENSIONS	NAT	2/24/2021			ECN-1434
C	ADDED CFM, dBA, AND CLEARANCE INFO	RCC	3/28/2018			1351
B	ADDED WATTAGE INFO	RCC	1/2/2018			
A	REDRAWN IN SW	RCC	4/10/2017			

ITEM NUMBER	N/A	USED ON	IQ2400VXS
MATERIAL	N/A		
EST WT:	lbs		
DRAWN BY	RCC	DATE	4/10/2017
		SCALE	1:8

UNLESS OTHERWISE SPECIFIED TOLERANCES	
.X	±.060
.XX	±.030
.XXX	±.015
FRACTIONAL	±1/16
ANGULAR	±1/2°
SURFACE FINISH ⁶³	
DO NOT SCALE DRAWING DIMENSIONS ARE INCHES	

ICE QUBE, INC.
THIS IS A PROPRIETARY DOCUMENT. DO NOT REPRODUCE OR DISCLOSE WITHOUT THE EXPRESS WRITTEN PERMISSION OF ICE QUBE, INC.
 DESCRIPTION
IQ2400VXS SPEC DRAWING XP2
 DRAWING NUMBER
IQ351417
 REV
D



1/4 - 20 X 1.0" LG PEM STUD (2)

CONDITIONED AIR OUTLET

THERMOSTAT

(1.367) [34.73]

SENSING BULB

1/4 - 20 PEM NUT (2)

(4.468) [113.49]

POWER SUPPLY

ENCLOSURE AIR INLET

Ø .375 [9.53] O.D. OVERFLOW DRAIN

.540 [13.72]

IMPORTANT
 GASKET MUST BE APPLIED AS SHOWN FOR PROPER OPERATION AND TO MAINTAIN NEMA INTEGRITY.

(24.000) [609.60]	.625 (2) [15.88]	1.528 [38.81]	5.978 [151.84]	9.375 (2) [238.13]	19.375 (2) [492.13]
21.843 [554.81]				(4) Ø .375 [9.53]	
19.005 [482.73]					
11.492 [291.89]					5.375 (2) [136.53]
3.528 [89.61]					
0	.875 [22.23]	9.125 [231.78]	(10.000) [254]		

EVAP. OUTLET ≈ 158 CFM
 COND. OUTLET ≈ 236 CFM
 SOUND LEVEL @5FT FROM UNIT @ A HT. OF 3FT = 55 dBA
 SOUND LEVEL @2FT FROM UNIT @ A HT. OF 5FT = 56 dBA
 CONDENSER INLET MIN. CLEARANCE 1.91"

ITEM NUMBER N/A	USED ON IQ2400VXS	UNLESS OTHERWISE SPECIFIED TOLERANCES X ±.060 .XX ±.030 .XXX ±.015 FRACTIONAL ±1/4 ANGULAR ±1/2°	ICE QUBE, INC. <small>THIS IS A PROPRIETARY DOCUMENT. DO NOT REPRODUCE OR DISCLOSE WITHOUT THE EXPRESS WRITTEN PERMISSION OF ICE QUBE, INC.</small> DESCRIPTION IQ2400VXS SPEC DRAWING XP2
MATERIAL N/A		SURFACE FINISH 63	
EST WT: DRAWN BY RCC	DATE 4/10/2017	SCALE 1:4	DRAWING NUMBER IQ351417 REV D