

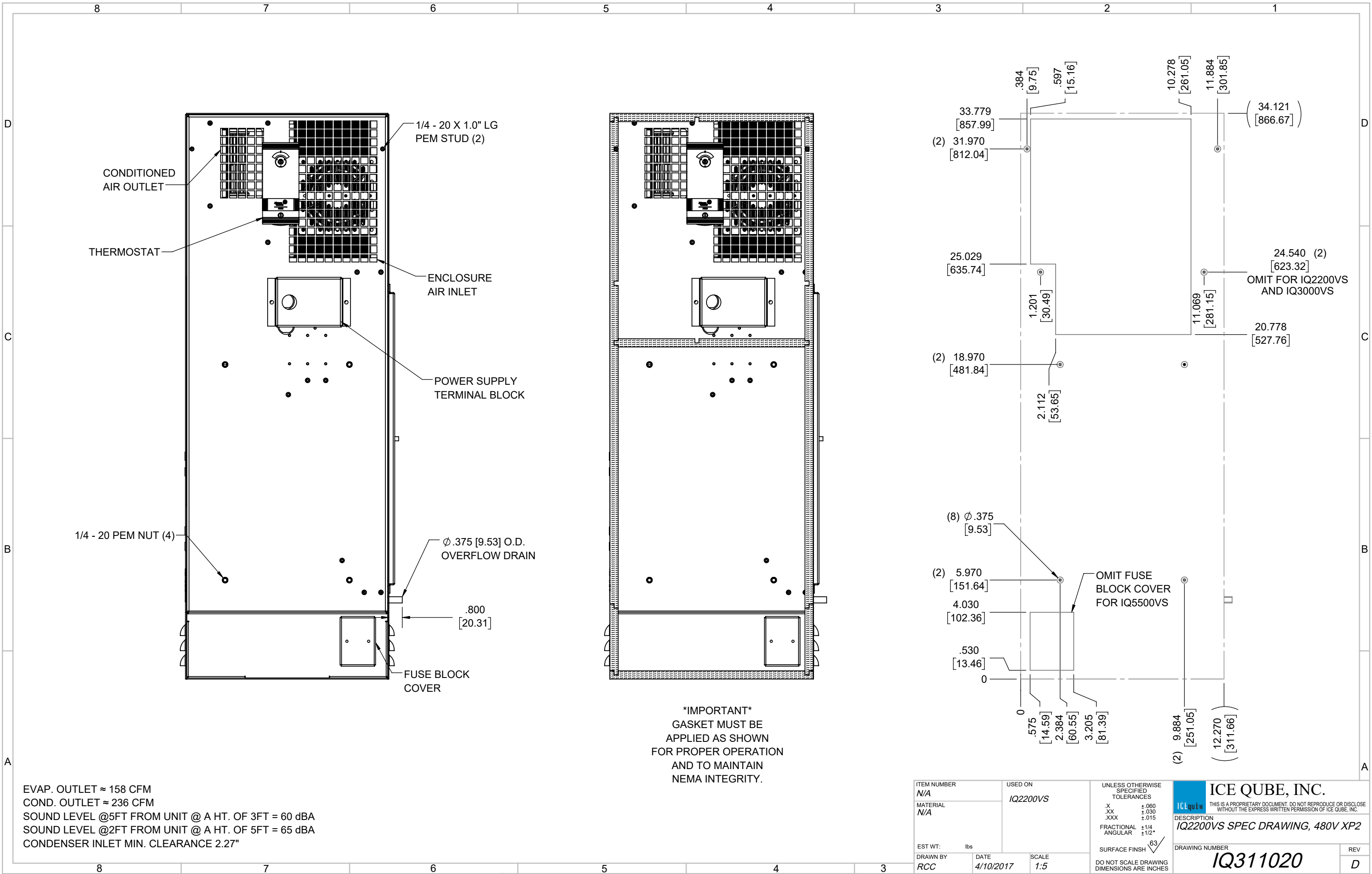
**IQ2200VS**  
 COOLING CAPACITY: 2200 BTUH (645W) @131°F (55°C)  
 MAXIMUM AMPS: 1.6 (768W) @480V/60HZ  
 MAXIMUM OPERATING TEMP: 131°F (55°C)  
 MINIMUM OPERATING TEMP: -4°F (-20°C)  
 DIMENSIONS: 34.12" (867MM) H X 12.28" (312MM) W X 6.34" (161MM) D  
 WEIGHT: 90 LBS (40.9KG)

REV	REVISION	CHG	DATE	APP	DATE	CN #
D	CHANGED THERMOSTAT DIMENSIONS	NAT	2/16/2021			ECN-1434
C	ADDED CFM, dBA, AND CLEARANCE INFO	RCC	3/28/2018			1351
B	ADDED WATTAGE INFO	RCC	1/2/2018			
A	REDRAWN IN SW	RCC	4/10/2017			

ITEM NUMBER	N/A	USED ON	IQ2200VS
MATERIAL	N/A		
EST WT:	lbs		
DRAWN BY	RCC	DATE	4/10/2017
		SCALE	1:9

UNLESS OTHERWISE SPECIFIED TOLERANCES	
.X	±.060
.XX	±.030
.XXX	±.015
FRACTIONAL	±1/16
ANGULAR	±1/2°
SURFACE FINISH $\sqrt{63}$	
DO NOT SCALE DRAWING DIMENSIONS ARE INCHES	

**ICE QUBE, INC.**  
THIS IS A PROPRIETARY DOCUMENT. DO NOT REPRODUCE OR DISCLOSE WITHOUT THE EXPRESS WRITTEN PERMISSION OF ICE QUBE, INC.  
 DESCRIPTION  
**IQ2200VS SPEC DRAWING, 480V XP2**  
 DRAWING NUMBER  
**IQ311020**  
 REV  
**D**



EVAP. OUTLET ≈ 158 CFM  
 COND. OUTLET ≈ 236 CFM  
 SOUND LEVEL @5FT FROM UNIT @ A HT. OF 3FT = 60 dBA  
 SOUND LEVEL @2FT FROM UNIT @ A HT. OF 5FT = 65 dBA  
 CONDENSER INLET MIN. CLEARANCE 2.27"

\*IMPORTANT\*  
 GASKET MUST BE  
 APPLIED AS SHOWN  
 FOR PROPER OPERATION  
 AND TO MAINTAIN  
 NEMA INTEGRITY.

ITEM NUMBER N/A	USED ON IQ2200VS	UNLESS OTHERWISE SPECIFIED TOLERANCES X ±.060 .XX ±.030 .XXX ±.015 FRACTIONAL ±1/4 ANGULAR ±1/2°	<p>THIS IS A PROPRIETARY DOCUMENT. DO NOT REPRODUCE OR DISCLOSE WITHOUT THE EXPRESS WRITTEN PERMISSION OF ICE QUBE, INC.</p>
MATERIAL N/A		<p>EST WT: lbs</p> <p>DRAWN BY: RCC DATE: 4/10/2017 SCALE: 1:5</p> <p>SURFACE FINISH: 63</p> <p>DO NOT SCALE DRAWING DIMENSIONS ARE INCHES</p>	
DESCRIPTION IQ2200VS SPEC DRAWING, 480V XP2			DRAWING NUMBER IQ311020
REV D			