

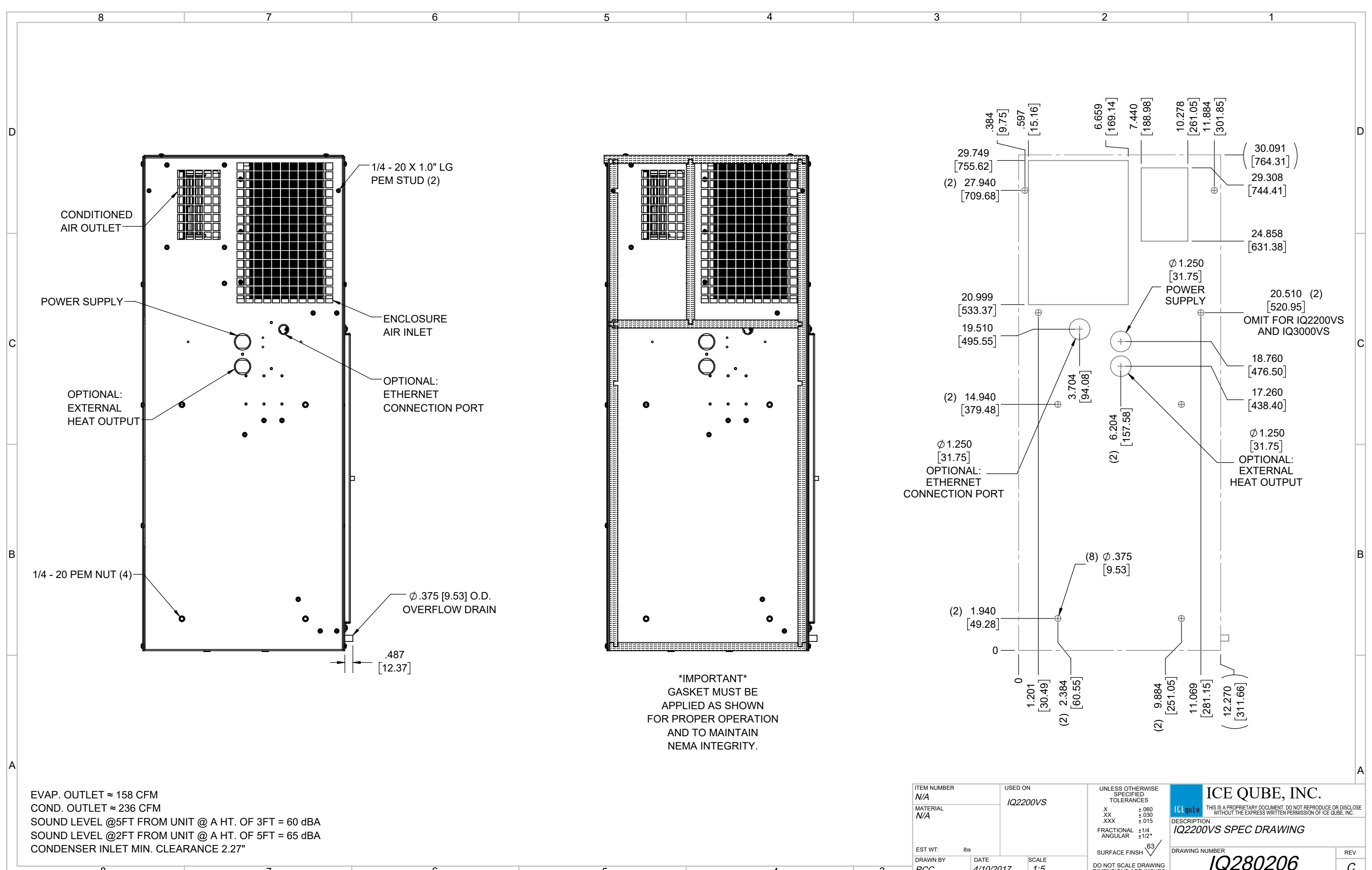
IQ2200VS
 COOLING CAPACITY: 2200 BTUH (645W) @131°F (55°C)
 MAXIMUM AMPS: 6.6 (792W) @120V/60HZ
 MAXIMUM AMPS: 3.3 (759W) @230V/60HZ
 MAXIMUM OPERATING TEMP: 131°F (55°C)
 MINIMUM OPERATING TEMP: -40°F (-40°C)
 DIMENSIONS: 30.09" (764MM) H X 12.28" (312MM) W X 6.34" (161MM) D
 WEIGHT: 55 LBS (25KG)

REV	CHG	DATE	APP	DATE	CN #
C		3/28/2018			1351
B		1/2/2018			
A		4/10/2017			

ITEM NUMBER N/A	USED ON IQ2200VS
MATERIAL N/A	
EST WT: lbs	
DRAWN BY RCC	DATE 4/10/2017
	SCALE 1:6

UNLESS OTHERWISE SPECIFIED TOLERANCES
 .X ±.060
 .XX ±.030
 .XXX ±.015
 FRACTIONAL ±1/16
 ANGULAR ±1/2°
 SURFACE FINISH 63

ICE QUBE, INC.
THIS IS A PROPRIETARY DOCUMENT. DO NOT REPRODUCE OR DISCLOSE WITHOUT THE EXPRESS WRITTEN PERMISSION OF ICE QUBE, INC.
 DESCRIPTION
IQ2200VS SPEC DRAWING
 DRAWING NUMBER
IQ280206
 REV
C



IMPORTANT
 GASKET MUST BE APPLIED AS SHOWN FOR PROPER OPERATION AND TO MAINTAIN NEMA INTEGRITY.

EVAP. OUTLET ≈ 158 CFM
 COND. OUTLET ≈ 236 CFM
 SOUND LEVEL @5FT FROM UNIT @ A HT. OF 3FT = 60 dBA
 SOUND LEVEL @2FT FROM UNIT @ A HT. OF 5FT = 65 dBA
 CONDENSER INLET MIN. CLEARANCE 2.27"

ITEM NUMBER N/A	USED ON IQ2200VS	UNLESS OTHERWISE SPECIFIED TOLERANCES X ±.060 .XX ±.030 .XXX ±.015 FRACTIONAL ±1/4 ANGULAR ±1/2°	<p>ICE QUBE, INC. <small>THIS IS A PROPRIETARY DOCUMENT. DO NOT REPRODUCE OR DISCLOSE WITHOUT THE EXPRESS WRITTEN PERMISSION OF ICE QUBE, INC.</small></p>
MATERIAL N/A		<p>EST WT: lbs</p> <p>DRAWN BY: RCC</p> <p>DATE: 4/10/2017</p> <p>SCALE: 1:5</p> <p>DO NOT SCALE DRAWING DIMENSIONS ARE INCHES</p>	
DESCRIPTION IQ2200VS SPEC DRAWING			DRAWING NUMBER IQ280206
REV C			