

IQ2200VS12
 COOLING CAPACITY: 2200 BTUH (645W) @131°F (55°C)
 MAXIMUM AMPS: 6.6 (792W) @120V/60HZ
 MAXIMUM AMPS: 3.3 (759W) @230V/60HZ
 MAXIMUM OPERATING TEMP: 131°F (55°C)
 MINIMUM OPERATING TEMP: -40°F (-40°C)
 DIMENSIONS: 30.09" (764MM) H X 11.99" (305MM) W X 6.34" (161MM) D
 WEIGHT: 75 LBS (34.1KG)

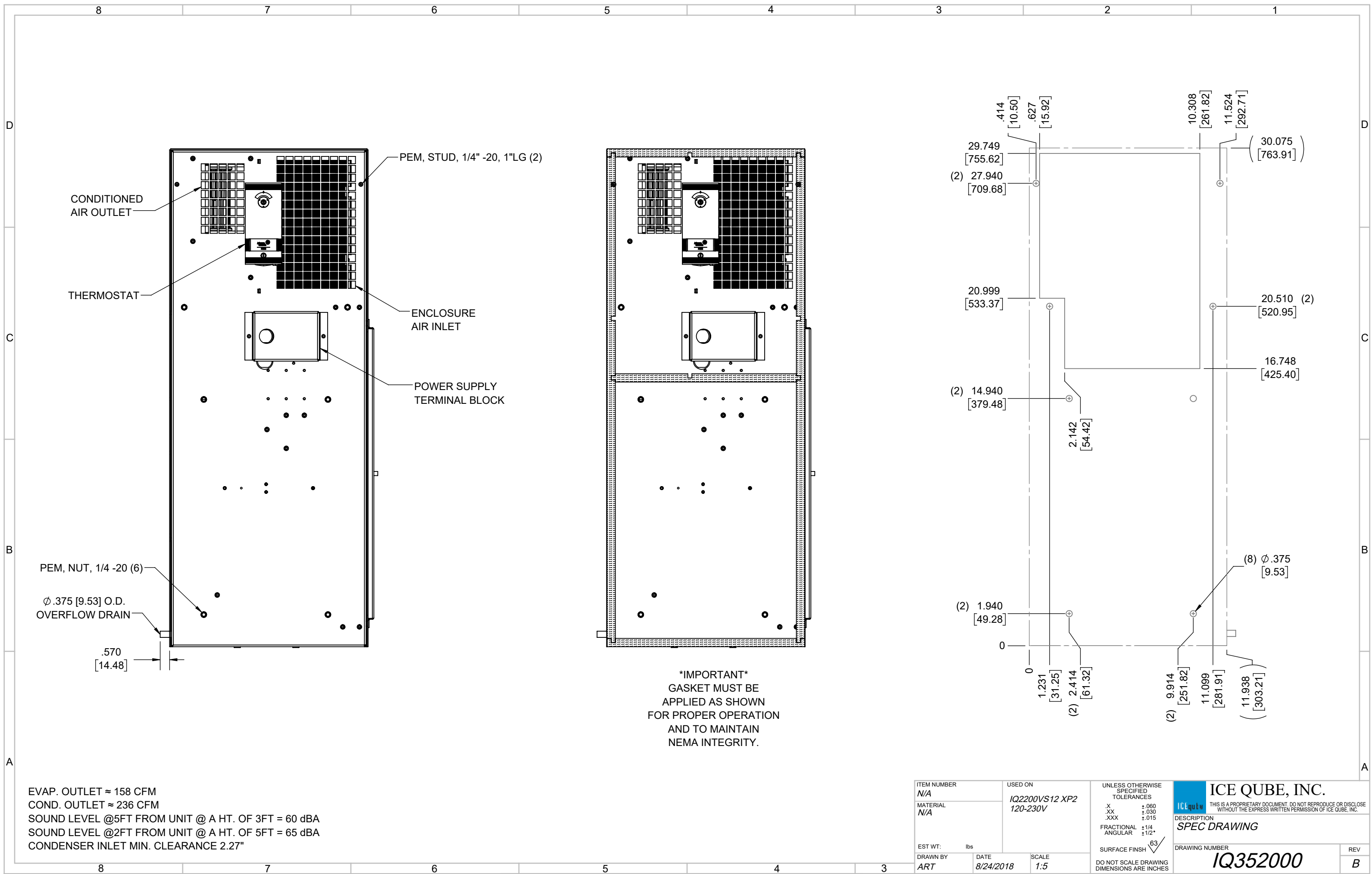
B	CHANGED THERMOSTAT DIMENSIONS	NAT	2/24/2021			ECN-1434
A	INITIAL DRAFT	RCC	9/7/2018			
REV	REVISION	CHG	DATE	APP	DATE	CN #

ITEM NUMBER	N/A
MATERIAL	N/A
EST WT:	lbs
DRAWN BY	ART

USED ON	IQ2200VS12 XP2 120-230V
DATE	8/24/2018
SCALE	1:6

UNLESS OTHERWISE SPECIFIED TOLERANCES	
.X	±.060
.XX	±.030
.XXX	±.015
FRACTIONAL	±1/16
ANGULAR	±1/2°
SURFACE FINISH	63
DO NOT SCALE DRAWING DIMENSIONS ARE INCHES	

ICE QUBE, INC.
THIS IS A PROPRIETARY DOCUMENT. DO NOT REPRODUCE OR DISCLOSE WITHOUT THE EXPRESS WRITTEN PERMISSION OF ICE QUBE, INC.
 DESCRIPTION
SPEC DRAWING
 DRAWING NUMBER
IQ352000
 REV
B



PEM, STUD, 1/4" -20, 1"LG (2)

CONDITIONED AIR OUTLET

THERMOSTAT

ENCLOSURE AIR INLET

POWER SUPPLY TERMINAL BLOCK

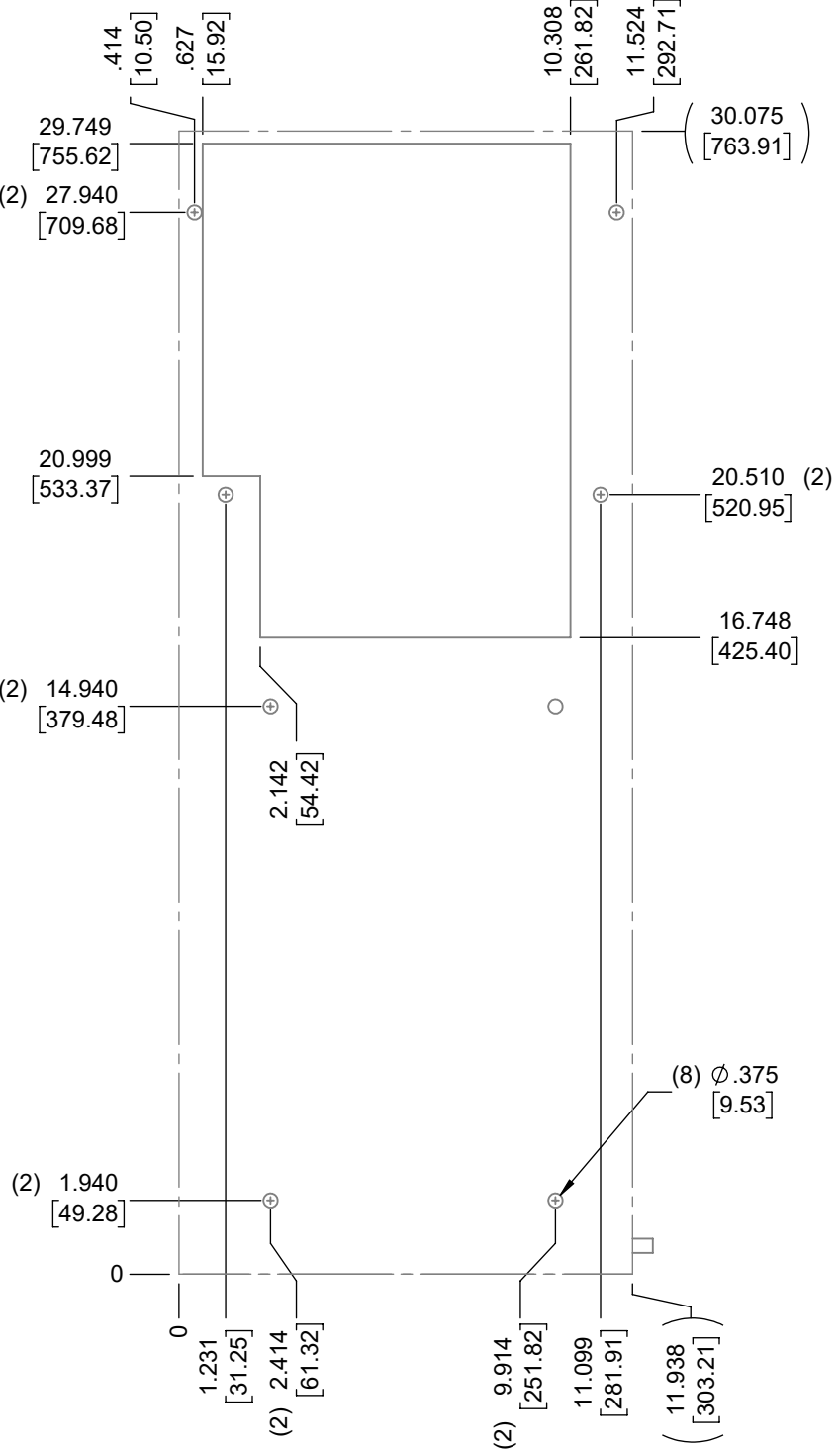
PEM, NUT, 1/4 -20 (6)

Ø .375 [9.53] O.D. OVERFLOW DRAIN

.570 [14.48]

IMPORTANT
 GASKET MUST BE APPLIED AS SHOWN FOR PROPER OPERATION AND TO MAINTAIN NEMA INTEGRITY.

EVAP. OUTLET ≈ 158 CFM
 COND. OUTLET ≈ 236 CFM
 SOUND LEVEL @5FT FROM UNIT @ A HT. OF 3FT = 60 dBA
 SOUND LEVEL @2FT FROM UNIT @ A HT. OF 5FT = 65 dBA
 CONDENSER INLET MIN. CLEARANCE 2.27"



ITEM NUMBER N/A	USED ON IQ2200VS12 XP2 120-230V	UNLESS OTHERWISE SPECIFIED TOLERANCES X ±.060 .XX ±.030 .XXX ±.015 FRACTIONAL ±1/4 ANGULAR ±1/2°	ICE QUBE, INC. <small>THIS IS A PROPRIETARY DOCUMENT. DO NOT REPRODUCE OR DISCLOSE WITHOUT THE EXPRESS WRITTEN PERMISSION OF ICE QUBE, INC.</small> SPEC DRAWING
MATERIAL N/A		SURFACE FINISH 63	
EST WT: lbs	DATE 8/24/2018	SCALE 1:5	DRAWING NUMBER IQ352000
DRAWN BY ART			REV B