

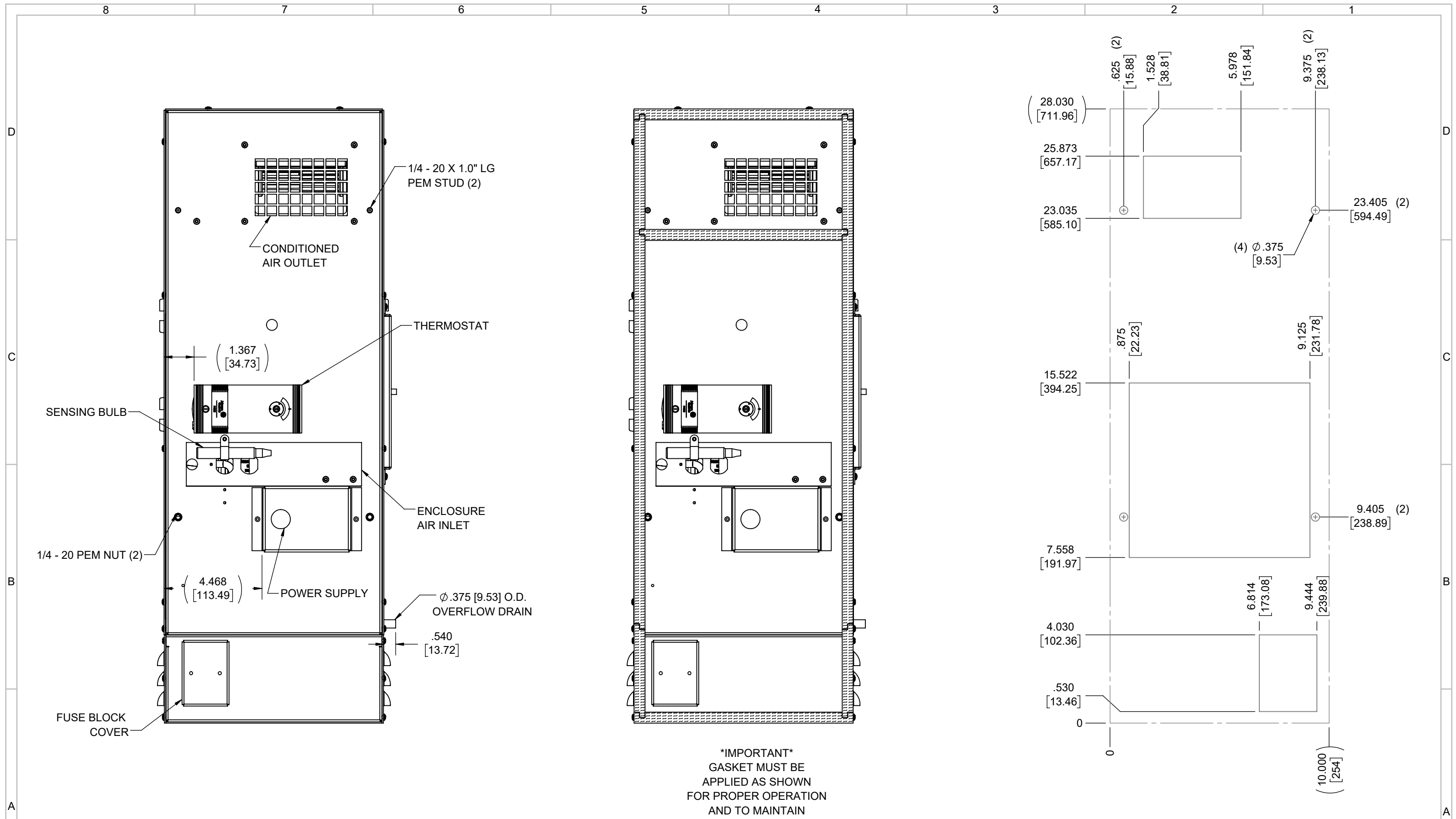
IQ2000VXS
 COOLING CAPACITY: 2000 BTUH (587W) @125°F (51.7°C)
 MAXIMUM AMPS: 1.6 (768W) @480V/60HZ
 MAXIMUM OPERATING TEMP: 125°F (51.7°C)
 MINIMUM OPERATING TEMP: -4°F (-20°C)
 DIMENSIONS: 28.03" (712MM) H X 10.03" (255MM) W X 10.00" (254MM) D
 WEIGHT: 94 LBS (42.7KG)

REV	REVISION	CHG	DATE	APP	DATE	CN #
D	CHANGED THERMOSTAT DIMENSIONS	NAT	2/24/2021			ECN-1434
C	ADDED CFM, dBA, AND CLEARANCE INFO	RCC	3/27/2018			1351
B	ADDED WATTAGE INFO	RCC	1/2/2018			
A	REDRAWN IN SW	RCC	4/10/2017			

ITEM NUMBER	N/A	USED ON	IQ2000VXS
MATERIAL	N/A		
EST WT:	lbs		
DRAWN BY	RCC	DATE	4/10/2017
		SCALE	1:8

UNLESS OTHERWISE SPECIFIED TOLERANCES	
.X	±.060
.XX	±.030
.XXX	±.015
FRACTIONAL	±1/16
ANGULAR	±1/2°
SURFACE FINISH $\sqrt{63}$	
DO NOT SCALE DRAWING DIMENSIONS ARE INCHES	

ICE QUBE, INC.
THIS IS A PROPRIETARY DOCUMENT. DO NOT REPRODUCE OR DISCLOSE WITHOUT THE EXPRESS WRITTEN PERMISSION OF ICE QUBE, INC.
 DESCRIPTION
IQ2000VXS SPEC DRAWING, 480V XP2
 DRAWING NUMBER
IQ320102



IMPORTANT
 GASKET MUST BE
 APPLIED AS SHOWN
 FOR PROPER OPERATION
 AND TO MAINTAIN
 NEMA INTEGRITY.

EVAP. OUTLET ≈ 158 CFM
 COND. OUTLET ≈ 236 CFM
 SOUND LEVEL @5FT FROM UNIT @ A HT. OF 3FT = 55 dBA
 SOUND LEVEL @2FT FROM UNIT @ A HT. OF 5FT = 56 dBA
 CONDENSER INLET MIN. CLEARANCE 1.91"

ITEM NUMBER N/A	USED ON IQ2000VXS	UNLESS OTHERWISE SPECIFIED TOLERANCES X ±.060 .XX ±.030 .XXX ±.015 FRACTIONAL ±1/4 ANGULAR ±1/2°	<p>THIS IS A PROPRIETARY DOCUMENT. DO NOT REPRODUCE OR DISCLOSE WITHOUT THE EXPRESS WRITTEN PERMISSION OF ICE QUBE, INC.</p>
MATERIAL N/A		<p>63</p> <p>SURFACE FINISH</p>	
EST WT: lbs		DO NOT SCALE DRAWING DIMENSIONS ARE INCHES	<p>DESCRIPTION IQ2000VXS SPEC DRAWING, 480V XP2</p> <p>DRAWING NUMBER IQ320102</p>
DRAWN BY RCC	DATE 4/10/2017	SCALE 1:4	<p>REV D</p>