

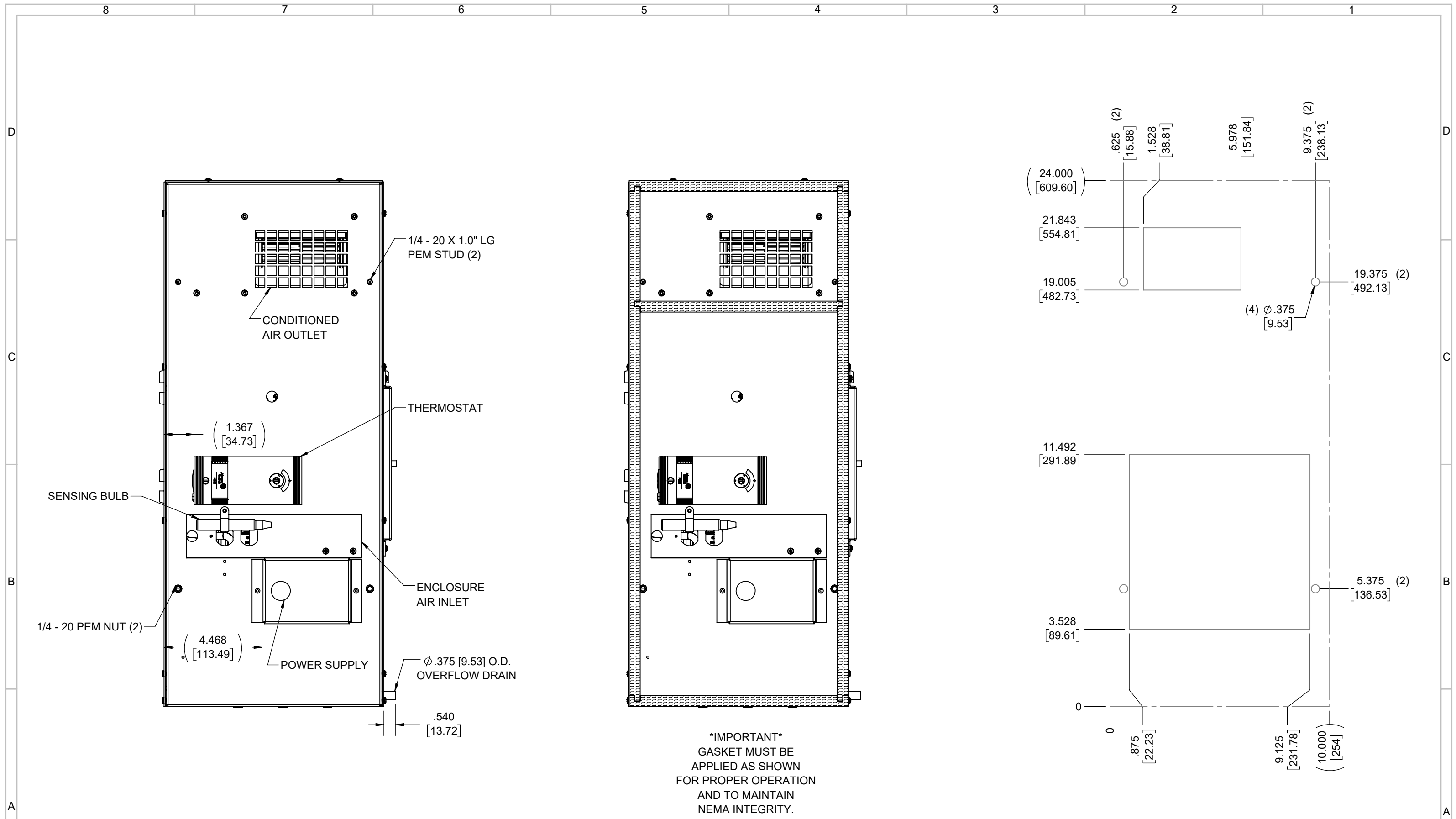
IQ2000VXS
 COOLING CAPACITY: 2000 BTUH (587W) @125°F (51.7°C)
 MAXIMUM AMPS: 6.6 (792W) @120V/60HZ
 MAXIMUM AMPS: 3.4 (782W) @230V/60HZ
 MAXIMUM OPERATING TEMP: 125°F (51.7°C)
 MINIMUM OPERATING TEMP: -4°F (-20°C)
 DIMENSIONS: 24.00" (610MM) H X 10.03" (255MM) W X 10.00" (254MM) D
 WEIGHT: 80 LBS (36.4KG)

REV	REVISION	CHG	DATE	APP	DATE	CN #
D	CHANGED THERMOSTAT DIMENSIONS	NAT	2/24/2021			ECN-1434
C	ADDED CFM, dBA, AND CLEARANCE INFO	RCC	3/27/2018			1351
B	ADDED WATTAGE INFO	RCC	1/2/2018			
A	REDRAWN IN SW	RCC	4/10/2017			

ITEM NUMBER	N/A	USED ON	IQ2000VXS
MATERIAL	N/A		
EST WT:	lbs		
DRAWN BY	RCC	DATE	4/10/2017
		SCALE	1:8

UNLESS OTHERWISE SPECIFIED TOLERANCES	
.X	±.060
.XX	±.030
.XXX	±.015
FRACTIONAL	±1/16
ANGULAR	±1/2°
SURFACE FINISH $\sqrt{63}$	
DO NOT SCALE DRAWING DIMENSIONS ARE INCHES	

ICE QUBE, INC.
THIS IS A PROPRIETARY DOCUMENT. DO NOT REPRODUCE OR DISCLOSE WITHOUT THE EXPRESS WRITTEN PERMISSION OF ICE QUBE, INC.
 DESCRIPTION
IQ2000VXS SPEC DRAWING XP2
 DRAWING NUMBER
IQ271012
 REV
D



EVAP. OUTLET ≈ 158 CFM
 COND. OUTLET ≈ 236 CFM
 SOUND LEVEL @5FT FROM UNIT @ A HT. OF 3FT = 55 dBA
 SOUND LEVEL @2FT FROM UNIT @ A HT. OF 5FT = 56 dBA
 CONDENSER INLET MIN. CLEARANCE 1.91"

ITEM NUMBER N/A	USED ON IQ2000VXS	UNLESS OTHERWISE SPECIFIED TOLERANCES X ±.060 .XX ±.030 .XXX ±.015 FRACTIONAL ±1/4 ANGULAR ±1/2°	<p>ICE QUBE, INC. <small>THIS IS A PROPRIETARY DOCUMENT. DO NOT REPRODUCE OR DISCLOSE WITHOUT THE EXPRESS WRITTEN PERMISSION OF ICE QUBE, INC.</small></p>
MATERIAL N/A		<p>EST WT: lbs</p> <p>DRAWN BY: RCC</p> <p>DATE: 4/10/2017</p> <p>SCALE: 1:4</p> <p>DO NOT SCALE DRAWING DIMENSIONS ARE INCHES</p>	
<p>DESCRIPTION IQ2000VXS SPEC DRAWING XP2</p>			<p>DRAWING NUMBER IQ271012</p> <p>REV D</p>