

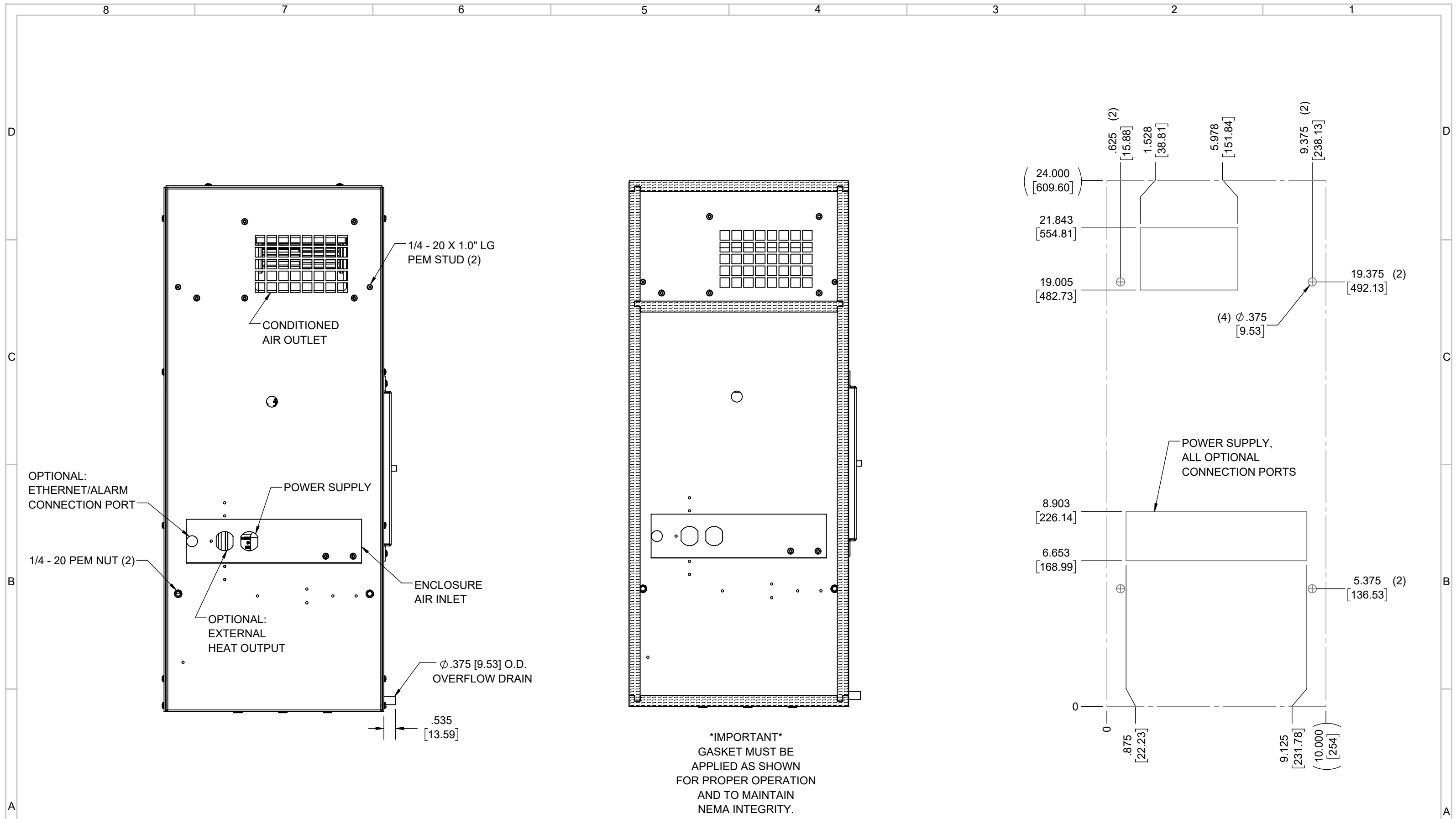
**IQ2000VXS**  
 COOLING CAPACITY: 2000 BTUH (587W) @131°F (55°C)  
 MAXIMUM AMPS: 6.6 (792W) @120V/60HZ  
 MAXIMUM AMPS: 3.4 (782W) @230V/60HZ  
 MAXIMUM OPERATING TEMP: 131°F (55°C)  
 MINIMUM OPERATING TEMP: -40°F (-40°C)  
 DIMENSIONS: 24.00" (610MM) H X 10.03" (255MM) W X 10.00" (254MM) D  
 WEIGHT: 60 LBS (27.3KG)

REV	REVISION	CHG	DATE	APP	DATE	CN #
C	ADDED CFM, dBA, AND CLEARANCE INFO	RCC	3/27/2018			1351
B	ADDED WATTAGE INFO	RCC	1/2/2018			
A	REDRAWN IN SW	RCC	4/10/2017			

ITEM NUMBER <i>N/A</i>	USED ON <i>IQ2000VXS</i>
MATERIAL <i>N/A</i>	
EST WT: lbs	
DRAWN BY <i>RCC</i>	DATE <i>4/10/2017</i>
	SCALE <i>1:6</i>

UNLESS OTHERWISE SPECIFIED TOLERANCES  
 .X ±.060  
 .XX ±.030  
 .XXX ±.015  
 FRACTIONAL ±1/16  
 ANGULAR ±1/2°  
 SURFACE FINISH  $\sqrt{63}$   
 DO NOT SCALE DRAWING DIMENSIONS ARE INCHES

**ICE QUBE, INC.**  
THIS IS A PROPRIETARY DOCUMENT. DO NOT REPRODUCE OR DISCLOSE WITHOUT THE EXPRESS WRITTEN PERMISSION OF ICE QUBE, INC.  
 DESCRIPTION  
**IQ2000VXS SPEC DRAWING**  
 DRAWING NUMBER  
**IQ280205**  
 REV  
**C**



EVAP. OUTLET ≈ 158 CFM  
 COND. OUTLET ≈ 236 CFM  
 SOUND LEVEL @5FT FROM UNIT @ A HT. OF 3FT = 55 dBA  
 SOUND LEVEL @2FT FROM UNIT @ A HT. OF 5FT = 56 dBA  
 CONDENSER INLET MIN. CLEARANCE 1.91"

ITEM NUMBER N/A	USED ON IQ2000VXS	UNLESS OTHERWISE SPECIFIED TOLERANCES X ±.060 .XX ±.030 .XXX ±.015 FRACTIONAL ±1/4 ANGULAR ±1/2°	<p>THIS IS A PROPRIETARY DOCUMENT. DO NOT REPRODUCE OR DISCLOSE WITHOUT THE EXPRESS WRITTEN PERMISSION OF ICE QUBE, INC.</p>
MATERIAL N/A		<p>EST WT: lbs</p> <p>DRAWN BY: RCC</p> <p>DATE: 4/10/2017</p> <p>SCALE: 1:4</p> <p>SURFACE FINISH: 63</p> <p>DO NOT SCALE DRAWING DIMENSIONS ARE INCHES</p>	
DESCRIPTION IQ2000VXS SPEC DRAWING			DRAWING NUMBER IQ280205
REV			C