

IQ2000IXS  
 COOLING CAPACITY: 2000 BTUH (587W) @131 °F (55 °C)  
 MAXIMUM AMPS: 4.7 (564W) @120V/60HZ  
 MAXIMUM AMPS: 2.3 (529W) @230V/60HZ  
 MAXIMUM OPERATING TEMP: 131 °F (55 °C)  
 MINIMUM OPERATING TEMP: -40 °F (-40 °C)  
 DIMENSIONS: 9.25" (235MM) H X 10.31" (262MM) W X 24.31" (617MM) D  
 WEIGHT: 50 LBS (22.7KG)

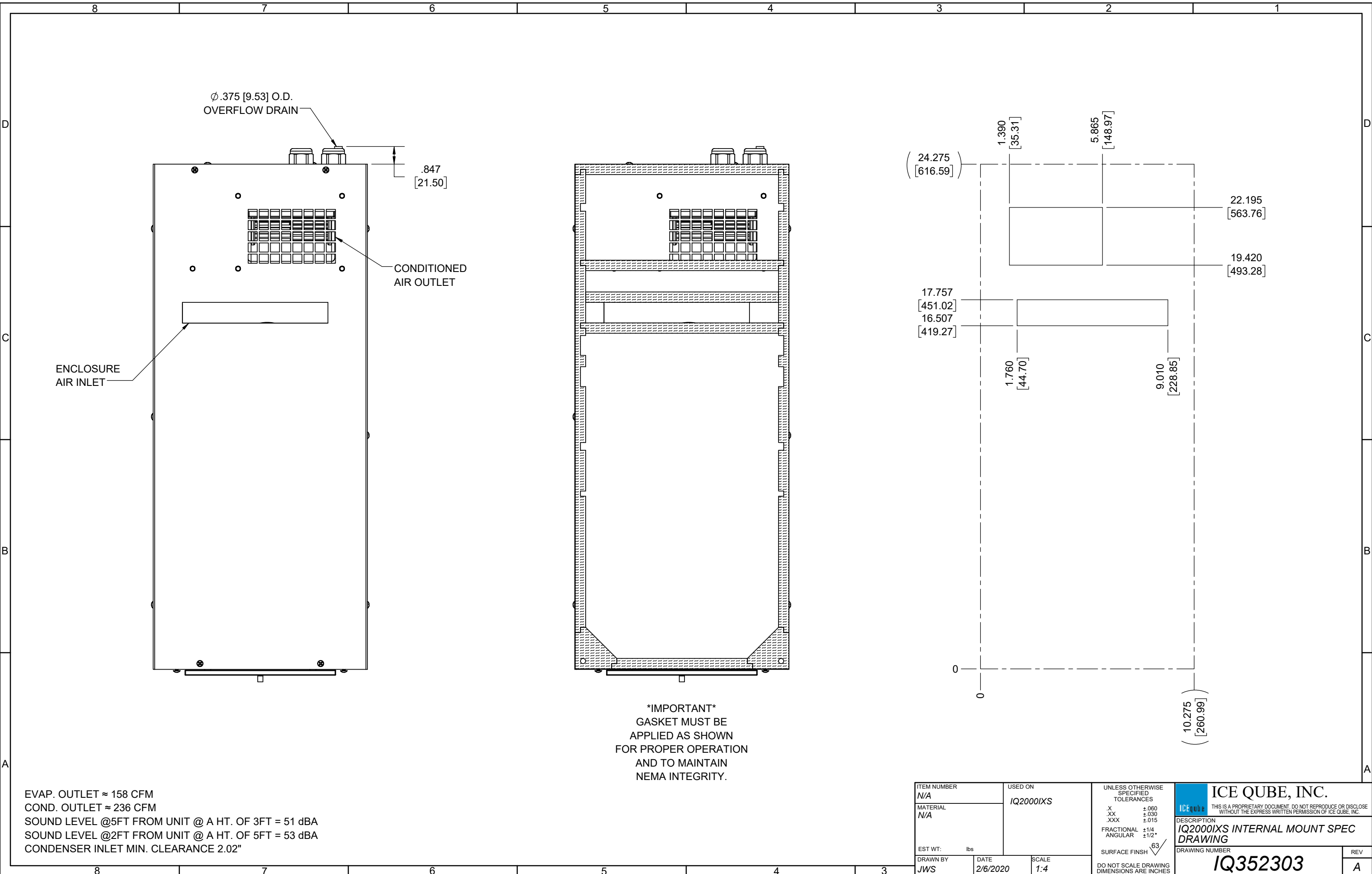
| REV | CHG | DATE     | APP | DATE | CN # |
|-----|-----|----------|-----|------|------|
| A   |     | 2/6/2020 | JWS |      |      |
|     |     |          |     |      |      |

|             |     |
|-------------|-----|
| ITEM NUMBER | N/A |
| MATERIAL    | N/A |
| EST WT:     | lbs |
| DRAWN BY    | JWS |

|         |           |
|---------|-----------|
| USED ON | IQ2000IXS |
| DATE    | 2/6/2020  |
| SCALE   | 1:6       |

|  |       |
|--|-------|
| UNLESS OTHERWISE SPECIFIED TOLERANCES      |       |
| .X   | ±.060 |
| .XX  | ±.030 |
| .XXX                                       | ±.015 |
| FRACTIONAL                                 | ±1/16 |
| ANGULAR                                    | ±1/2° |
| SURFACE FINISH                             | 63    |
| DO NOT SCALE DRAWING DIMENSIONS ARE INCHES |       |

|   |     |
|---|-----|
| ICE QUBE, INC.  |     |
| THIS IS A PROPRIETARY DOCUMENT. DO NOT REPRODUCE OR DISCLOSE WITHOUT THE EXPRESS WRITTEN PERMISSION OF ICE QUBE, INC. |     |
| DESCRIPTION   |     |
| IQ2000IXS INTERNAL MOUNT SPEC DRAWING   |     |
| DRAWING NUMBER  | REV |
| IQ352303  | A   |



**\*IMPORTANT\***  
 GASKET MUST BE  
 APPLIED AS SHOWN  
 FOR PROPER OPERATION  
 AND TO MAINTAIN  
 NEMA INTEGRITY.

EVAP. OUTLET ≈ 158 CFM  
 COND. OUTLET ≈ 236 CFM  
 SOUND LEVEL @5FT FROM UNIT @ A HT. OF 3FT = 51 dBA  
 SOUND LEVEL @2FT FROM UNIT @ A HT. OF 5FT = 53 dBA  
 CONDENSER INLET MIN. CLEARANCE 2.02"

|  |  |                             |  |                                       |  |   |  |
|--|--|-----------------------------|--|---------------------------------------|--|---|--|
| ITEM NUMBER<br><i>N/A</i>                  |  | USED ON<br><i>IQ2000IXS</i> |  | UNLESS OTHERWISE SPECIFIED TOLERANCES |  | ICE QUBE, INC.  |  |
| MATERIAL<br><i>N/A</i>                     |  |                             |  | X ±.060<br>.XX ±.030<br>.XXX ±.015    |  | THIS IS A PROPRIETARY DOCUMENT. DO NOT REPRODUCE OR DISCLOSE WITHOUT THE EXPRESS WRITTEN PERMISSION OF ICE QUBE, INC. |  |
| EST WT. lbs                                |  |                             |  | FRACTIONAL ±1/4<br>ANGULAR ±1/2°      |  | DESCRIPTION<br><b>IQ2000IXS INTERNAL MOUNT SPEC DRAWING</b>   |  |
| DRAWN BY<br><i>JWS</i>                     |  | DATE<br><i>2/6/2020</i>     |  | SCALE<br><i>1:4</i>                   |  | DRAWING NUMBER<br><b>IQ352303</b>   |  |
| DO NOT SCALE DRAWING DIMENSIONS ARE INCHES |  |                             |  |                                       |  | REV<br><b>A</b>   |  |