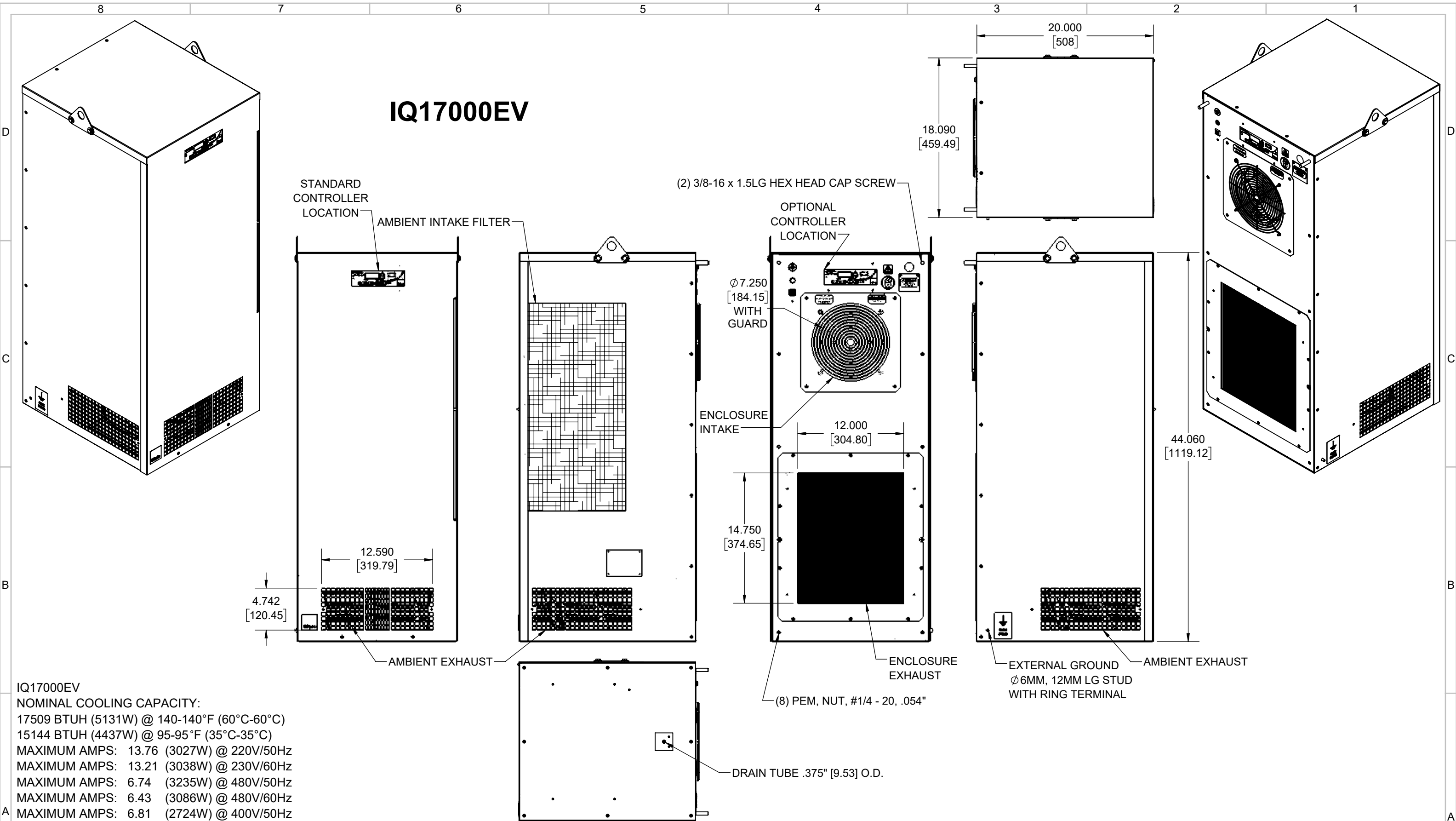


# IQ17000EV



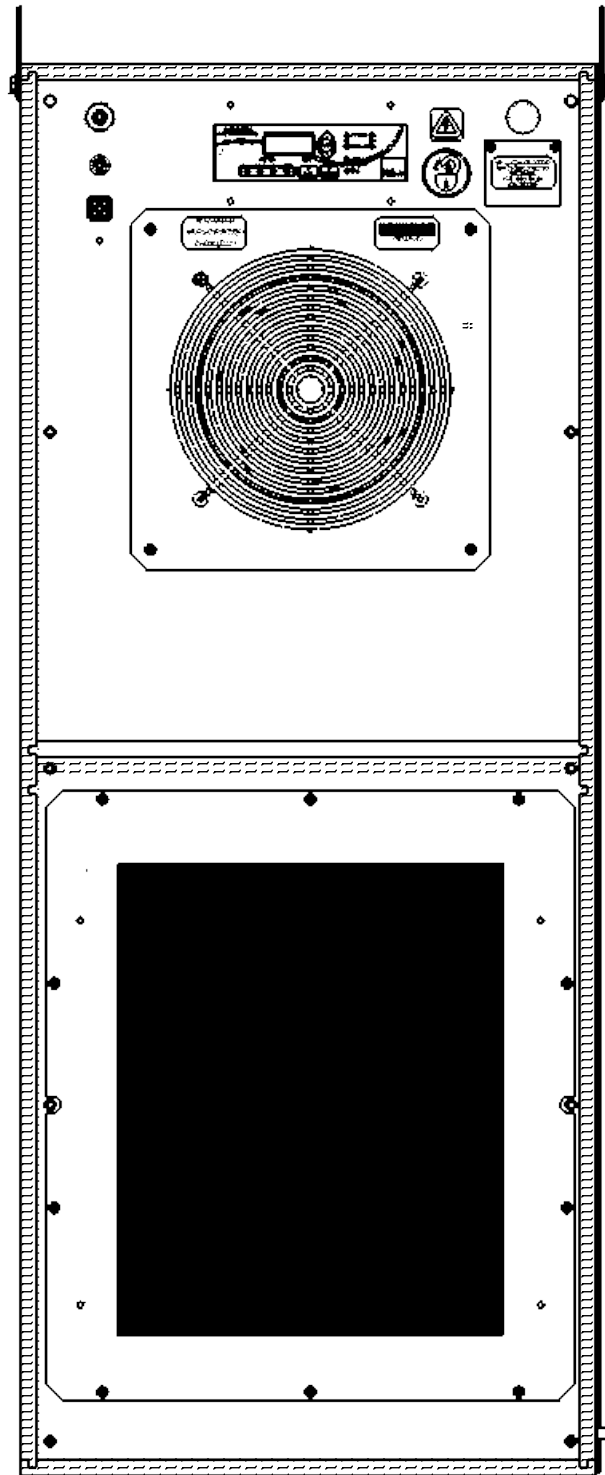
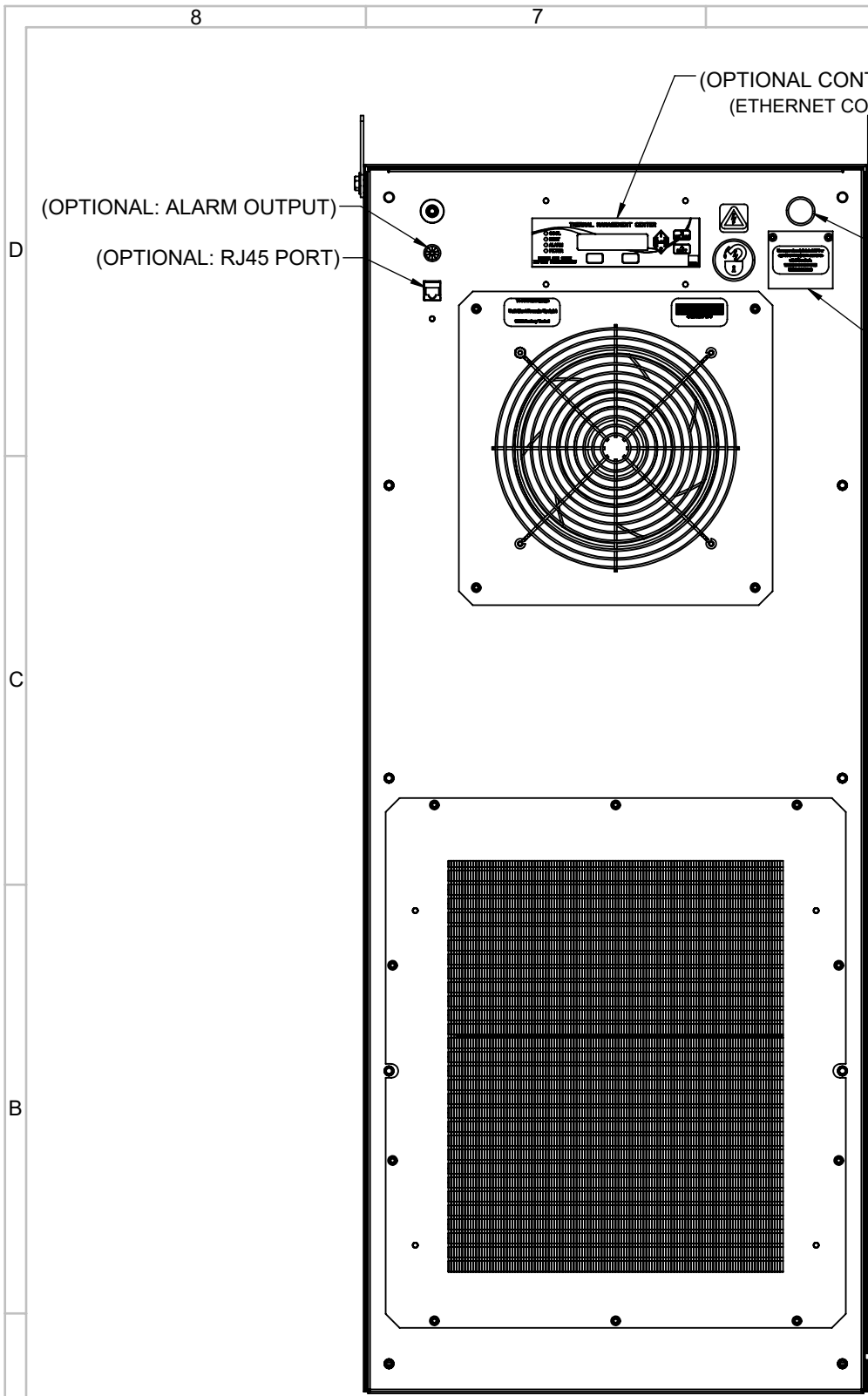
**IQ17000EV**  
 NOMINAL COOLING CAPACITY:  
 17509 BTUH (5131W) @ 140-140°F (60°C-60°C)  
 15144 BTUH (4437W) @ 95-95°F (35°C-35°C)  
 MAXIMUM AMPS: 13.76 (3027W) @ 220V/50Hz  
 MAXIMUM AMPS: 13.21 (3038W) @ 230V/60Hz  
 MAXIMUM AMPS: 6.74 (3235W) @ 480V/50Hz  
 MAXIMUM AMPS: 6.43 (3086W) @ 480V/60Hz  
 MAXIMUM AMPS: 6.81 (2724W) @ 400V/50Hz  
 MAXIMUM AMPS: 6.92 (2768W) @ 400V/60Hz  
 MAXIMUM OPERATING TEMPERATURE: 140°F (60°C)  
 DIMENSIONS: 44.060" (1119MM) H x 18.060" (459MM) W x 20.000" (508MM) D  
 WEIGHT: 222 LBS (101KG) @ 220/230V  
 WEIGHT: 274 LBS (125KG) @ 400/480V  
 REFRIGERANT CHARGE-R407C: 2LB 12OZ (1247G)

| REV | REVISION                           | CHG | DATE      | APP | DATE      | CN # |
|-----|------------------------------------|-----|-----------|-----|-----------|------|
| B   | ADDED CFM, dBA, AND CLEARANCE INFO | RCC | 5/11/2018 | ART | 5/11/2018 | 1347 |
| A   | PRODUCTION RELEASE                 | ART | 12/4/2017 | JGG | 12/4/2017 | 1331 |

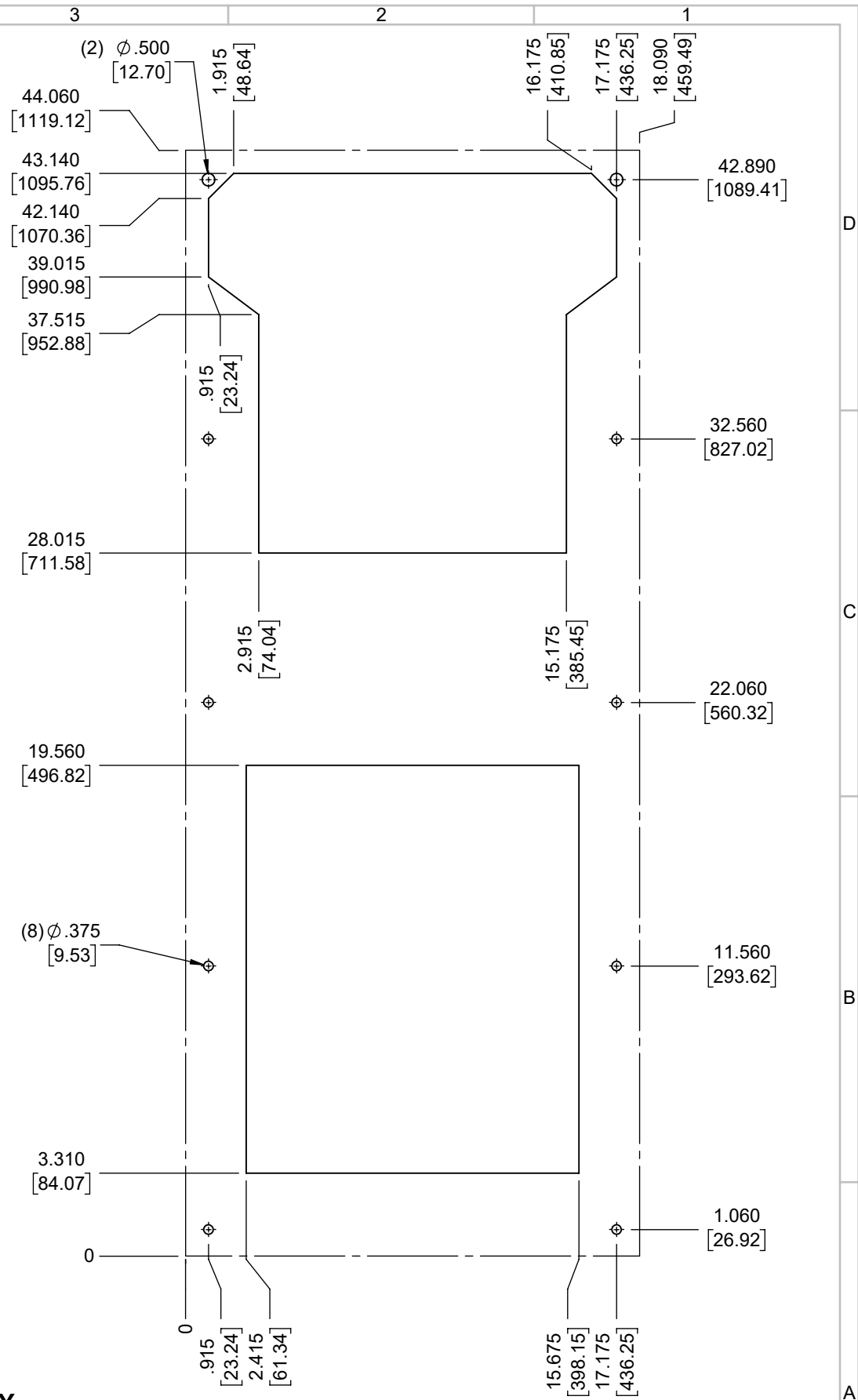
|             |     |         |           |
|-------------|-----|---------|-----------|
| ITEM NUMBER | N/A | USED ON | IQ17000EV |
| MATERIAL    | N/A |         |           |
| EST WT:     | lbs |         |           |
| DRAWN BY    | ART | DATE    | 12/4/2017 |
|             |     | SCALE   | 1:10      |

|  |       |
|--|-------|
| UNLESS OTHERWISE SPECIFIED TOLERANCES      |       |
| X  | ±.060 |
| .XX  | ±.030 |
| .XXX                                       | ±.015 |
| FRACTIONAL                                 | ±1/16 |
| ANGULAR                                    | ±1/2° |
| SURFACE FINISH                             | 63    |
| DO NOT SCALE DRAWING DIMENSIONS ARE INCHES |       |

**ICE QUBE, INC.**  
THIS IS A PROPRIETARY DOCUMENT. DO NOT REPRODUCE OR DISCLOSE WITHOUT THE EXPRESS WRITTEN PERMISSION OF ICE QUBE, INC.  
**DESCRIPTION**  
 IQ17000EV SPEC DRAWING  
**DRAWING NUMBER**  
 IQ351562  
**REV**  
 B



**\*IMPORTANT\***  
**GASKET MUST BE APPLIED AS SHOWN FOR PROPER OPERATION AND TO MAINTAIN ENCLOSURE INTEGRITY**



EVAP. OUTLET  $\approx$  800 CFM  
 COND. OUTLET  $\approx$  1100 CFM  
 SOUND LEVEL @5FT FROM UNIT @ A HT. OF 3FT = 65 dBA  
 SOUND LEVEL @2FT FROM UNIT @ A HT. OF 5FT = 70 dBA  
 CONDENSER INLET MIN. CLEARANCE 3.76"

|                    |                      |  |   |
|--------------------|----------------------|--|---|
| ITEM NUMBER<br>N/A | USED ON<br>IQ17000EV | UNLESS OTHERWISE SPECIFIED TOLERANCES<br>X $\pm$ .060<br>.XX $\pm$ .030<br>.XXX $\pm$ .015 | <p>ICE QUBE, INC.<br/> <small>THIS IS A PROPRIETARY DOCUMENT. DO NOT REPRODUCE OR DISCLOSE WITHOUT THE EXPRESS WRITTEN PERMISSION OF ICE QUBE, INC.</small></p> |
| MATERIAL<br>N/A    |                      | FRACTIONAL $\pm$ 1/4<br>ANGULAR $\pm$ 1/2°   |   |
| EST WT:<br>lbs     |                      | SURFACE FINISH $\sqrt{63}$   | DESCRIPTION<br>IQ17000EV SPEC DRAWING   |
| DRAWN BY<br>ART    | DATE<br>12/4/2017    | SCALE<br>1:6   | DRAWING NUMBER<br>IQ351562  |
|                    |                      | DO NOT SCALE DRAWING DIMENSIONS ARE INCHES   | REV<br>B  |