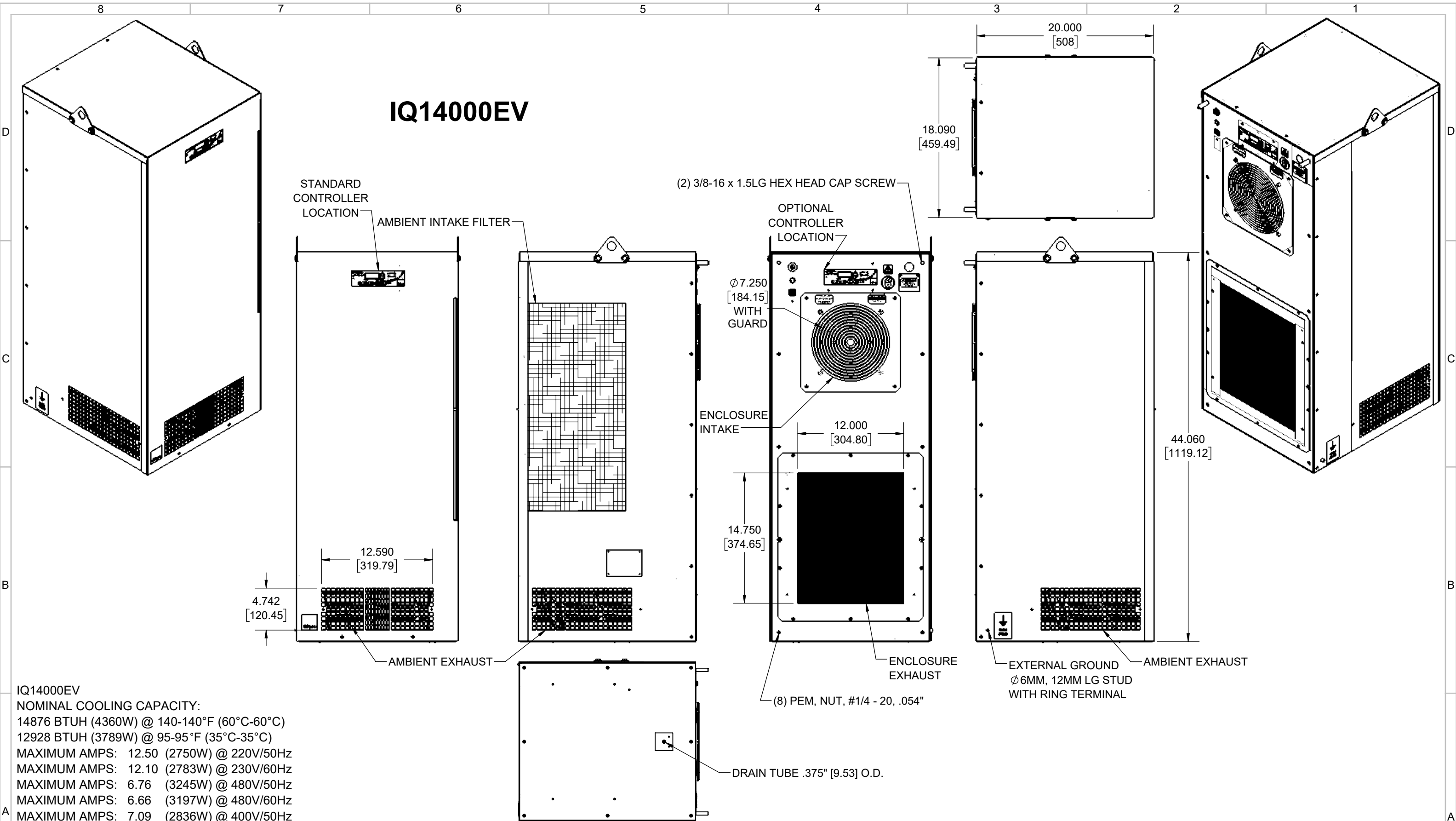


IQ14000EV



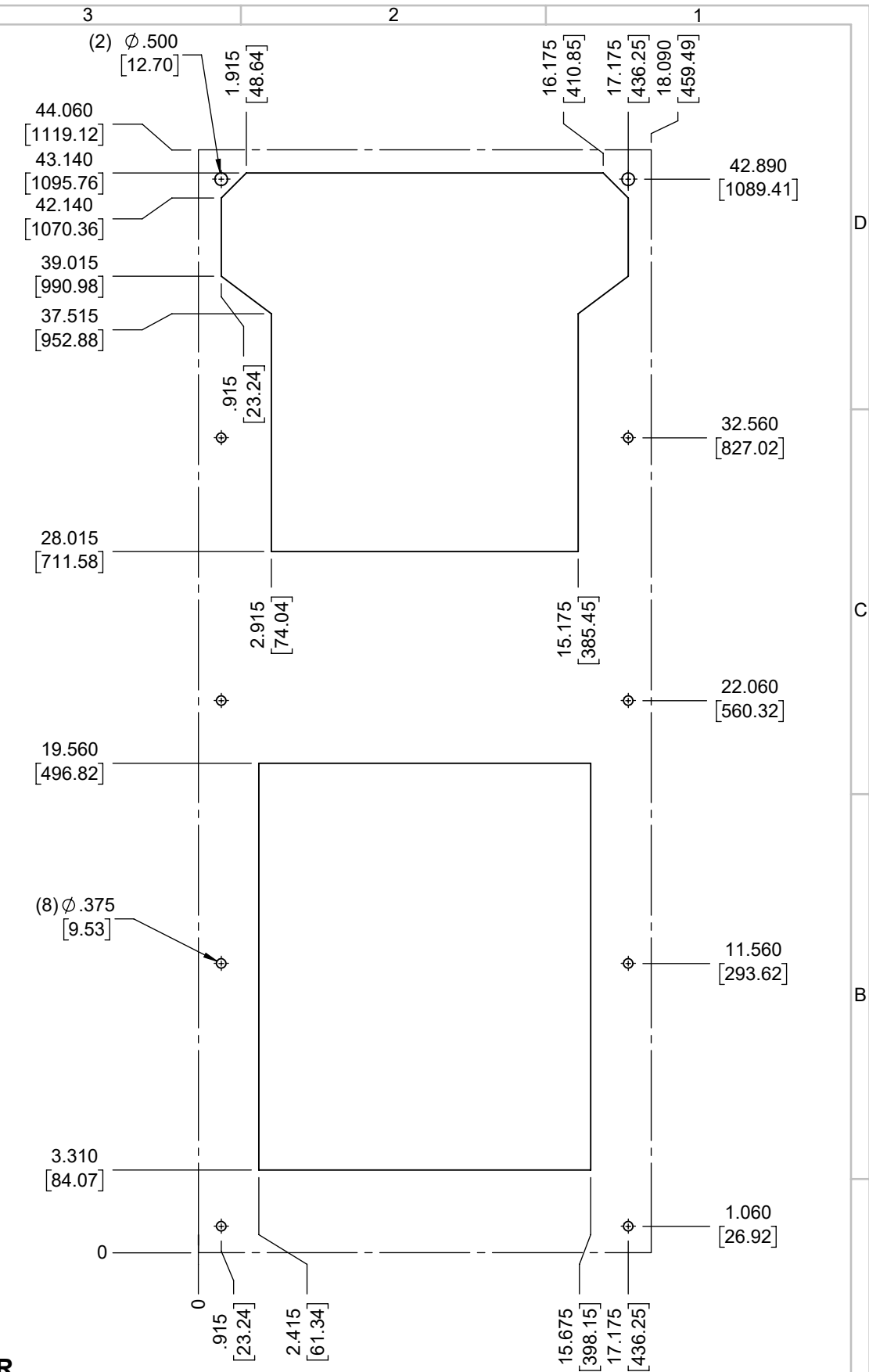
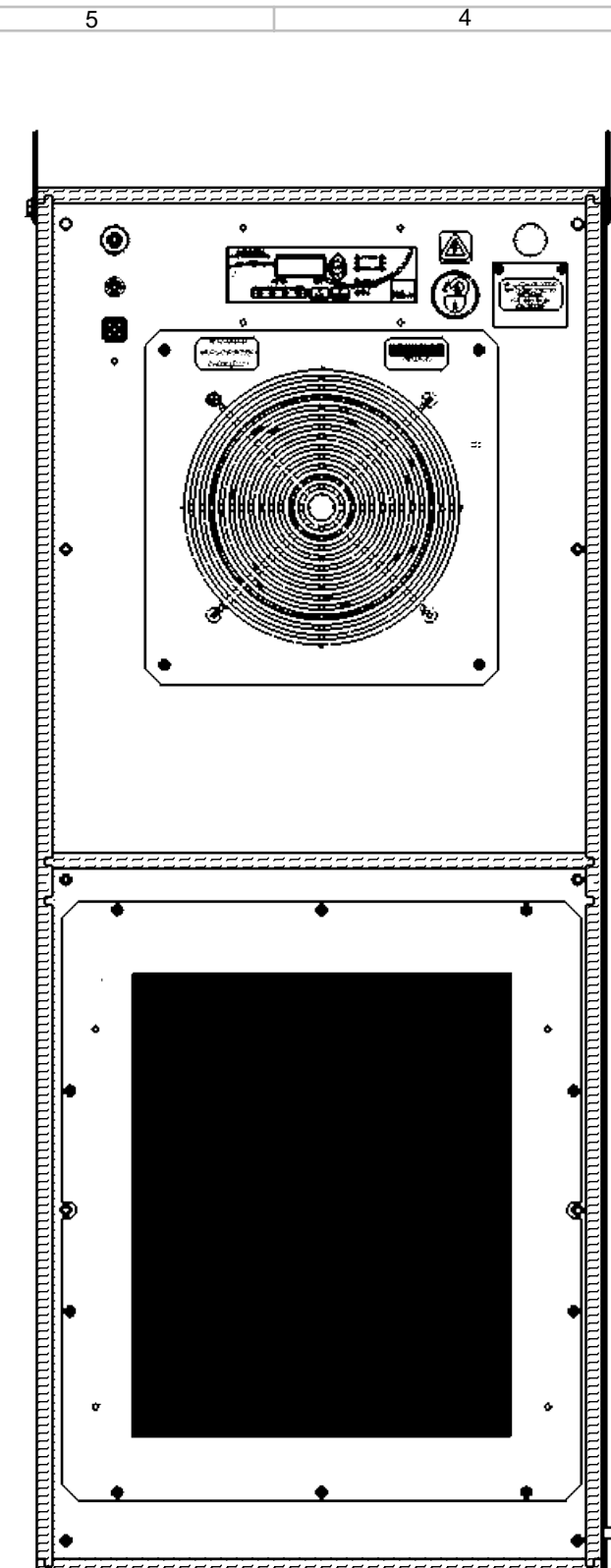
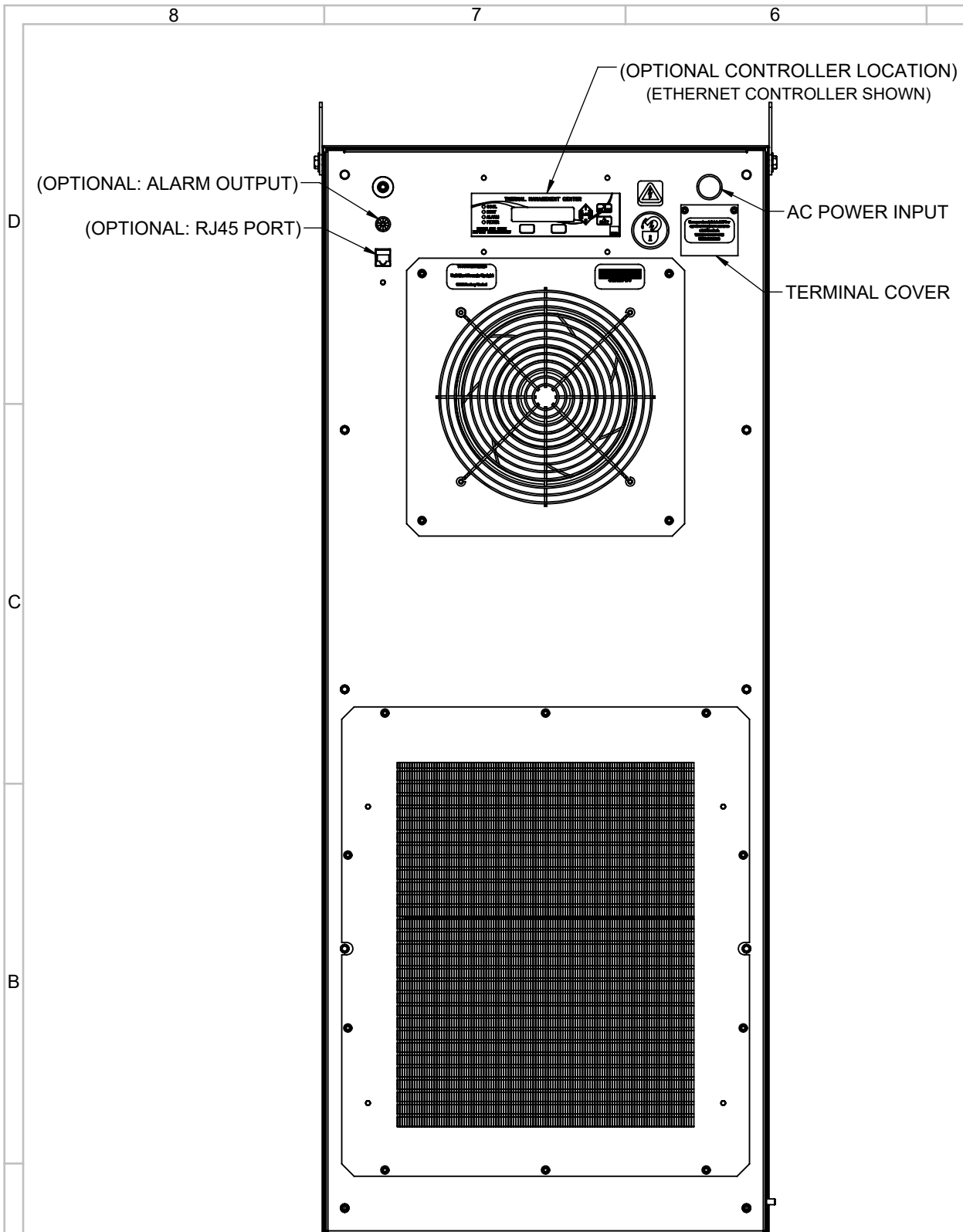
IQ14000EV
 NOMINAL COOLING CAPACITY:
 14876 BTUH (4360W) @ 140-140°F (60°C-60°C)
 12928 BTUH (3789W) @ 95-95°F (35°C-35°C)
 MAXIMUM AMPS: 12.50 (2750W) @ 220V/50Hz
 MAXIMUM AMPS: 12.10 (2783W) @ 230V/60Hz
 MAXIMUM AMPS: 6.76 (3245W) @ 480V/50Hz
 MAXIMUM AMPS: 6.66 (3197W) @ 480V/60Hz
 MAXIMUM AMPS: 7.09 (2836W) @ 400V/50Hz
 MAXIMUM AMPS: 7.11 (2844W) @ 400V/60Hz
 MAXIMUM OPERATING TEMPERATURE: 140°F (60°C)
 DIMENSIONS: 44.060" (1119MM) H x 18.060" (459MM) W x 20.000" (508MM) D
 WEIGHT: 222 LBS (101KG) @ 220/230V
 WEIGHT: 274 LBS (125KG) @ 400/480V
 REFRIGERANT CHARGE-R407C: 2LB 12OZ (1247G)

REV	DESCRIPTION	CHG	DATE	APP	DATE	CN #
B	ADDED CFM, dBA, AND CLEARANCE INFO	RCC	5/11/2018	ART	5/11/2018	1347
A	PRODUCTION RELEASE	ART	12/4/2017	JGG	12/4/2017	1331

ITEM NUMBER	N/A	USED ON	IQ14000EV
MATERIAL	N/A		
EST WT:	lbs		
DRAWN BY	ART	DATE	12/4/2017
		SCALE	1:10

UNLESS OTHERWISE SPECIFIED TOLERANCES	
.X	±.060
.XX	±.030
.XXX	±.015
FRACTIONAL	±1/16
ANGULAR	±1/2°
SURFACE FINISH	63
DO NOT SCALE DRAWING DIMENSIONS ARE INCHES	

ICE QUBE, INC.
THIS IS A PROPRIETARY DOCUMENT. DO NOT REPRODUCE OR DISCLOSE WITHOUT THE EXPRESS WRITTEN PERMISSION OF ICE QUBE, INC.
IQ14000EV SPEC DRAWING
 DRAWING NUMBER: **IQ351561**
 REV: **B**



IMPORTANT
GASKET MUST BE APPLIED AS SHOWN FOR PROPER OPERATION AND TO MAINTAIN ENCLOSURE INTEGRITY

EVAP. OUTLET \approx 800 CFM
 COND. OUTLET \approx 1100 CFM
 SOUND LEVEL @5FT FROM UNIT @ A HT. OF 3FT = 65 dBA
 SOUND LEVEL @2FT FROM UNIT @ A HT. OF 5FT = 70 dBA
 CONDENSER INLET MIN. CLEARANCE 3.76"

ITEM NUMBER N/A	USED ON IQ14000EV	UNLESS OTHERWISE SPECIFIED TOLERANCES X \pm .060 .XX \pm .030 .XXX \pm .015	<p>THIS IS A PROPRIETARY DOCUMENT. DO NOT REPRODUCE OR DISCLOSE WITHOUT THE EXPRESS WRITTEN PERMISSION OF ICE QUBE, INC.</p>
MATERIAL N/A		FRACTIONAL \pm 1/4 ANGULAR \pm 1/2°	
EST WT: lbs		SURFACE FINISH 63	DESCRIPTION IQ14000EV SPEC DRAWING
DRAWN BY ART	DATE 12/4/2017	SCALE 1:6	DRAWING NUMBER IQ351561
		DO NOT SCALE DRAWING DIMENSIONS ARE INCHES	REV B