

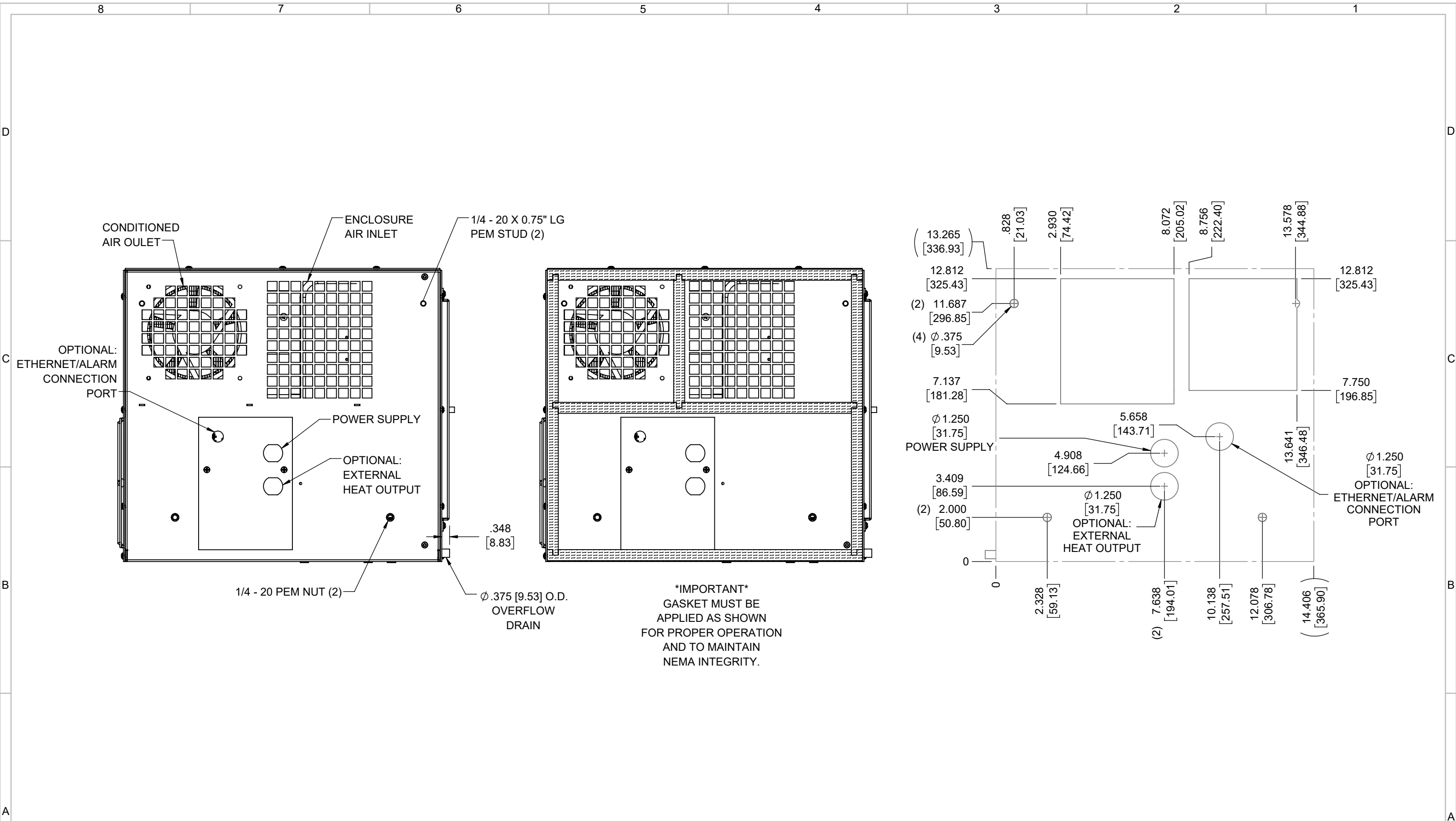
IQ1000V  
 COOLING CAPACITY: 1000 BTUH (293W) @131°F (55°C)  
 MAXIMUM AMPS: 3.1 (372W) @120V/60HZ  
 MAXIMUM AMPS: 1.6 (368W) @230V/60HZ  
 MAXIMUM OPERATING TEMP: 131°F (55°C)  
 MINIMUM OPERATING TEMP: -40°F (-40°C)  
 DIMENSIONS: 13.28" (337MM) H X 14.43" (367MM) W X 8.03" (204MM) D  
 WEIGHT: 37 LBS (16.8KG)

REV	REVISION	CHG	DATE	APP	DATE	CN #
C	ADDED CFM, dBA, AND CLEARANCE INFO	RCC	3/28/2018			1351
B	ADDED WATTAGE INFO	RCC	1/3/2018			
A	REDRAWN IN SW	RCC	4/12/2017			

ITEM NUMBER N/A	USED ON IQ1000V
MATERIAL N/A	
EST WT: lbs	
DRAWN BY RCC	DATE 4/12/2017
	SCALE 1:5

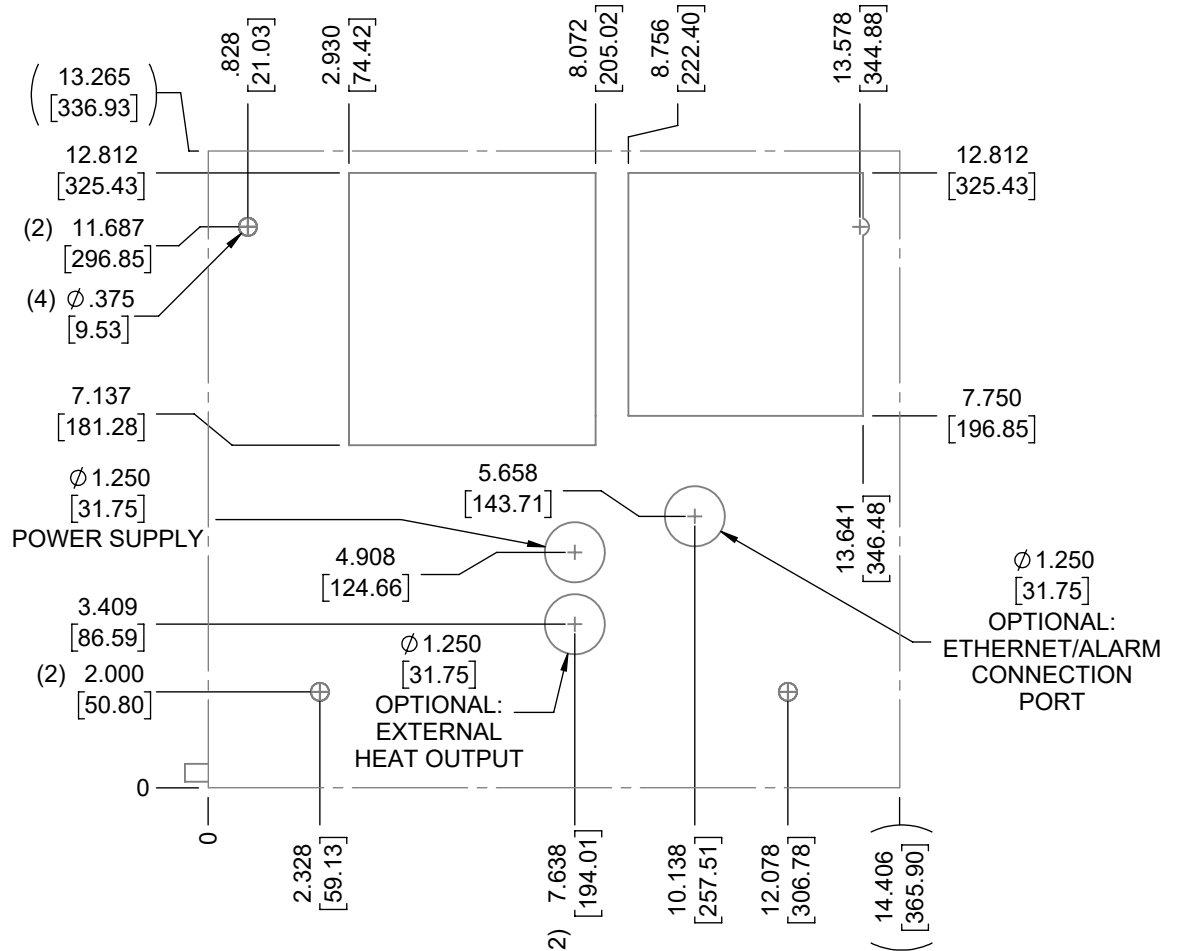
UNLESS OTHERWISE SPECIFIED TOLERANCES	
.X	±.060
.XX	±.030
.XXX	±.015
FRACTIONAL	±1/16
ANGULAR	±1/2°
SURFACE FINISH $\sqrt{63}$	
DO NOT SCALE DRAWING DIMENSIONS ARE INCHES	

**ICE QUBE, INC.**  
THIS IS A PROPRIETARY DOCUMENT. DO NOT REPRODUCE OR DISCLOSE WITHOUT THE EXPRESS WRITTEN PERMISSION OF ICE QUBE, INC.  
 DESCRIPTION  
**IQ1000V SPEC DRAWING**  
 DRAWING NUMBER  
**IQ280208**  
 REV  
**C**



**\*IMPORTANT\***  
 GASKET MUST BE  
 APPLIED AS SHOWN  
 FOR PROPER OPERATION  
 AND TO MAINTAIN  
 NEMA INTEGRITY.

EVAP. OUTLET ≈ 70 CFM  
 COND. OUTLET ≈ 190 CFM  
 SOUND LEVEL @5FT FROM UNIT @ A HT. OF 3FT = 56 dBA  
 SOUND LEVEL @2FT FROM UNIT @ A HT. OF 5FT = 57 dBA  
 CONDENSER INLET MIN. CLEARANCE 2.12"



ITEM NUMBER N/A	USED ON IQ1000V	UNLESS OTHERWISE SPECIFIED TOLERANCES X ±.060 .XX ±.030 .XXX ±.015 FRACTIONAL ±1/4 ANGULAR ±1/2°	<p>ICE QUBE, INC.  <small>THIS IS A PROPRIETARY DOCUMENT. DO NOT REPRODUCE OR DISCLOSE WITHOUT THE EXPRESS WRITTEN PERMISSION OF ICE QUBE, INC.</small></p>
MATERIAL N/A		<p>EST WT: lbs</p> <p>DRAWN BY: RCC</p> <p>DATE: 4/12/2017</p> <p>SCALE: 1:4</p> <p>DO NOT SCALE DRAWING DIMENSIONS ARE INCHES</p>	
DESCRIPTION IQ1000V SPEC DRAWING			DRAWING NUMBER IQ280208
REV C			