

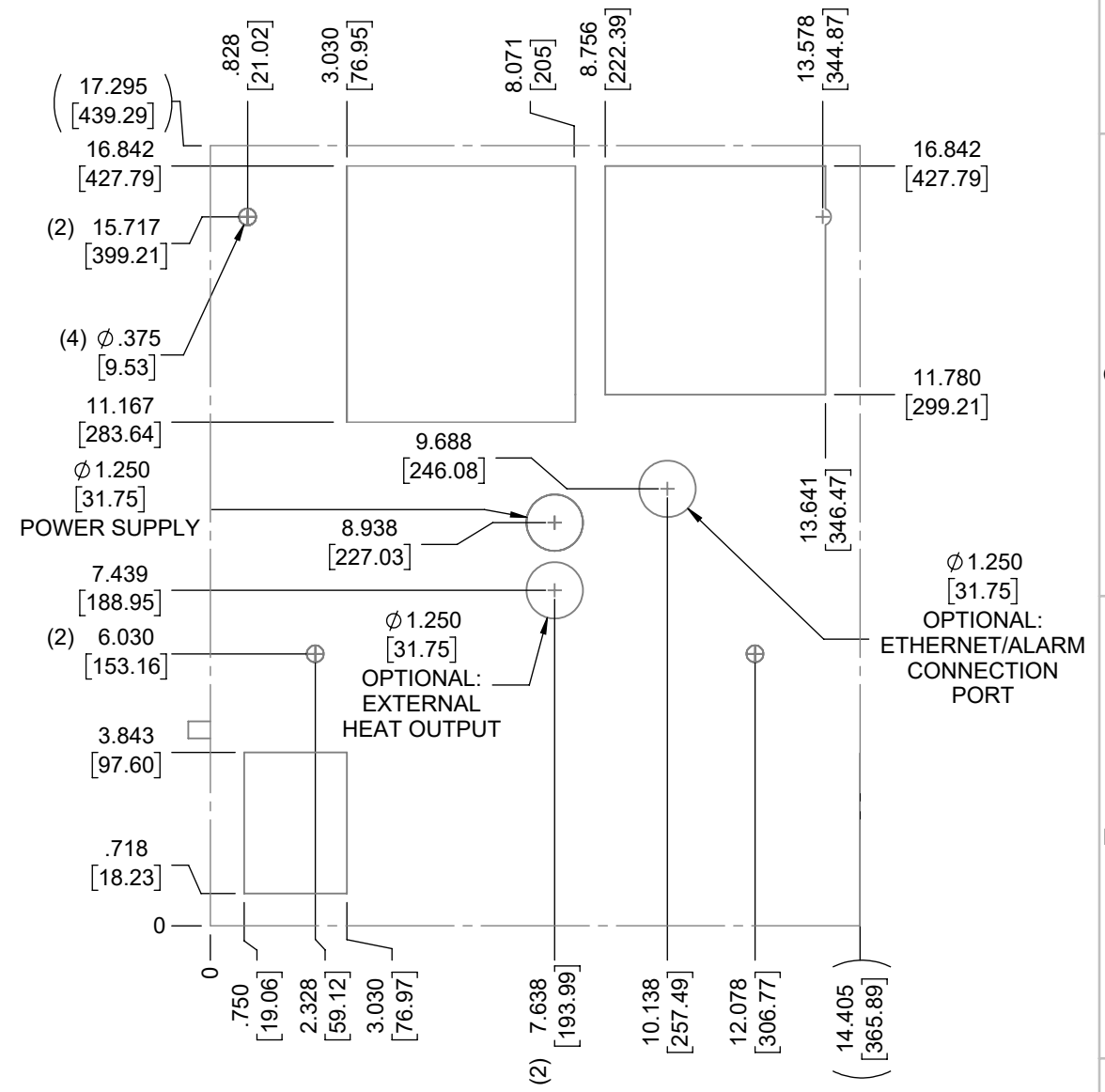
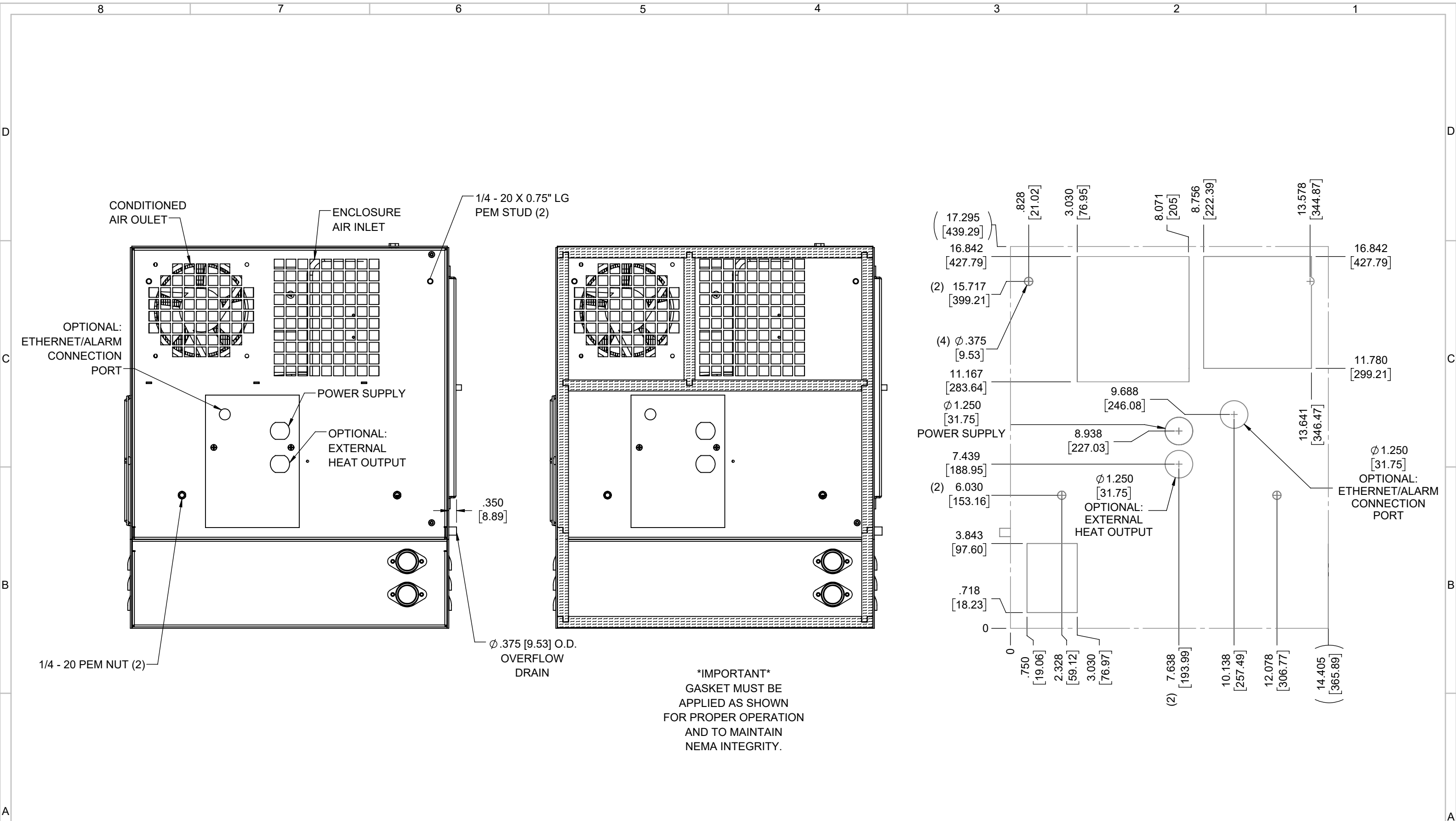
IQ1000V
 COOLING CAPACITY: 1000 BTUH (293W) @131°F (55°C)
 MAXIMUM AMPS: 0.8 (384W) @480V/60HZ
 MAXIMUM OPERATING TEMP: 131°F (55°C)
 MINIMUM OPERATING TEMP: -40°F (-40°C)
 DIMENSIONS: 17.31" (440MM) H X 14.43" (367MM) W X 8.03" (204MM) D
 WEIGHT: 51 LBS (23.2KG)

REV	REVISION	CHG	DATE	APP	DATE	CN #
C	ADDED CFM, dBA, AND CLEARANCE INFO	RCC	3/28/2018			1351
B	ADDED WATTAGE INFO	RCC	1/3/2018			
A	REDRAWN IN SW	RCC	4/12/2017			

ITEM NUMBER	N/A	USED ON	IQ1000V
MATERIAL	N/A		
EST WT:	lbs		
DRAWN BY	RCC	DATE	4/12/2017
		SCALE	1:5

UNLESS OTHERWISE SPECIFIED TOLERANCES	
.X	±.060
.XX	±.030
.XXX	±.015
FRACTIONAL	±1/16
ANGULAR	±1/2°
SURFACE FINISH $\sqrt{63}$	
DO NOT SCALE DRAWING DIMENSIONS ARE INCHES	

ICE QUBE, INC.
THIS IS A PROPRIETARY DOCUMENT. DO NOT REPRODUCE OR DISCLOSE WITHOUT THE EXPRESS WRITTEN PERMISSION OF ICE QUBE, INC.
 DESCRIPTION
IQ1000V SPEC DRAWING, 480V
 DRAWING NUMBER
IQ300226
 REV
C



EVAP. OUTLET ≈ 70 CFM
 COND. OUTLET ≈ 190 CFM
 SOUND LEVEL @5FT FROM UNIT @ A HT. OF 3FT = 56 dBA
 SOUND LEVEL @2FT FROM UNIT @ A HT. OF 5FT = 57 dBA
 CONDENSER INLET MIN. CLEARANCE 2.12"

IMPORTANT
 GASKET MUST BE
 APPLIED AS SHOWN
 FOR PROPER OPERATION
 AND TO MAINTAIN
 NEMA INTEGRITY.

ITEM NUMBER N/A	USED ON IQ1000V	UNLESS OTHERWISE SPECIFIED TOLERANCES X ±.060 XX ±.030 XXX ±.015 FRACTIONAL ±1/4 ANGULAR ±1/2°	ICE QUBE, INC. <small>THIS IS A PROPRIETARY DOCUMENT. DO NOT REPRODUCE OR DISCLOSE WITHOUT THE EXPRESS WRITTEN PERMISSION OF ICE QUBE, INC.</small> DESCRIPTION IQ1000V SPEC DRAWING, 480V
MATERIAL N/A		SURFACE FINISH 63	
EST WT: lbs		DO NOT SCALE DRAWING DIMENSIONS ARE INCHES	DRAWING NUMBER IQ300226
DRAWN BY RCC	DATE 4/12/2017	SCALE 1:4	REV C